

# **ANATOMÍA DEL SISTEMA MUSCULAR DEL MIEMBRO INFERIOR**



Departamento  
de Anatomía y Medicina Legal

**FACULTAD DE MEDICINA**  
UNIVERSIDAD DE CHILE

# **2024**

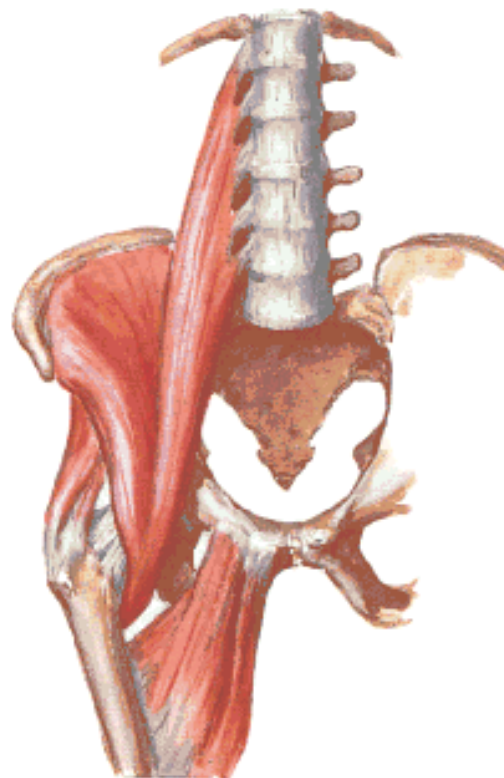
**Prof. Juan Brunstein MSc. PhD**



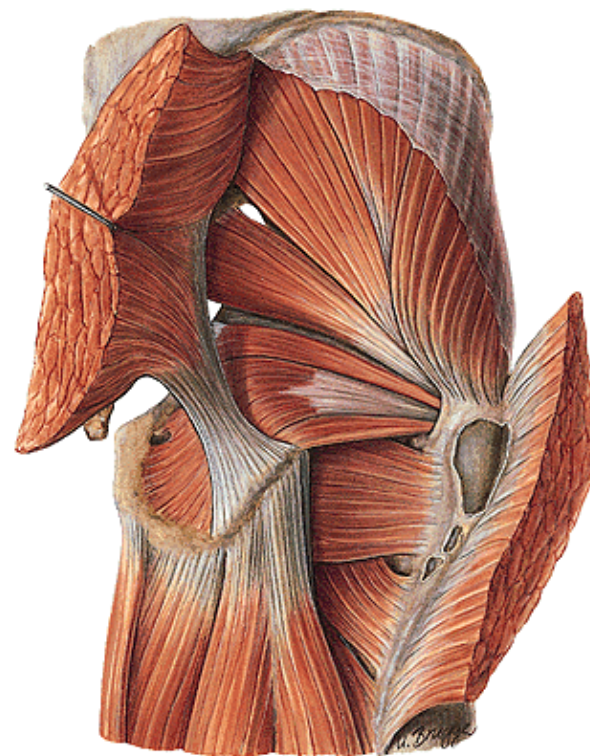
Departamento  
de Anatomía y Medicina Legal

**FACULTAD DE MEDICINA**  
UNIVERSIDAD DE CHILE

# Flexión de muslo

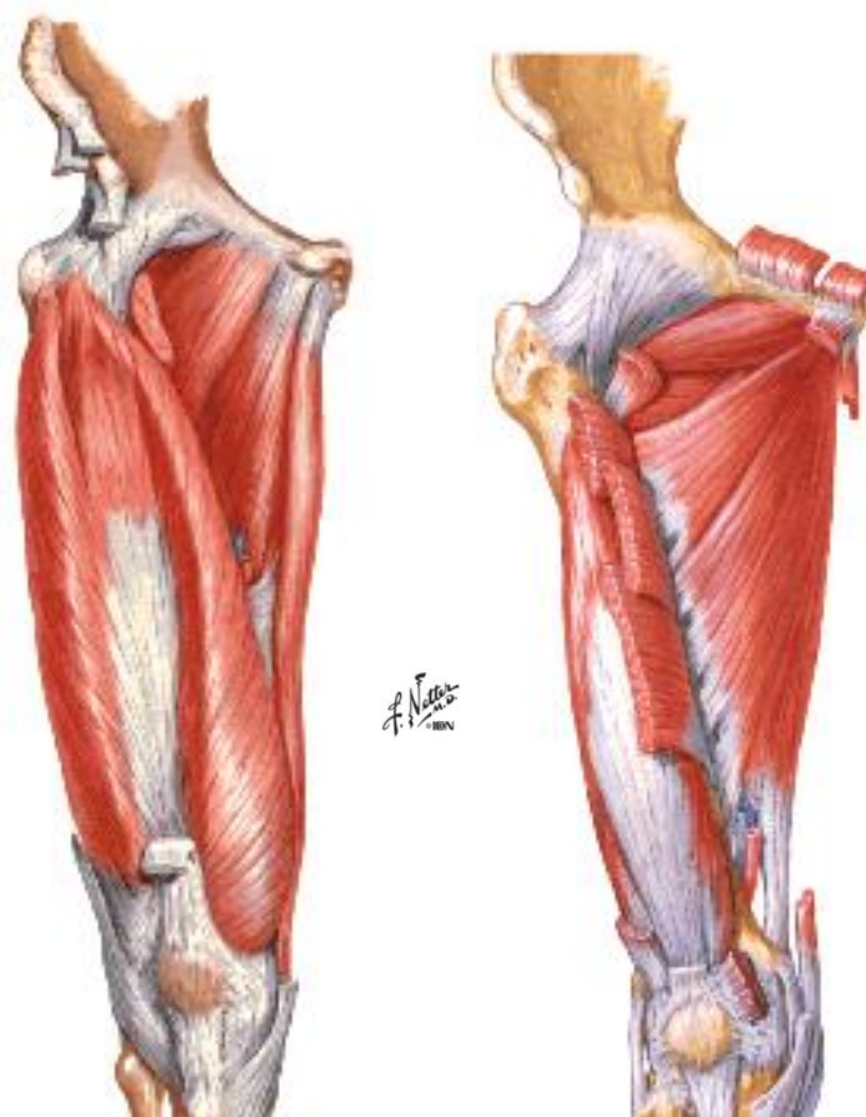


# Extensión de muslo



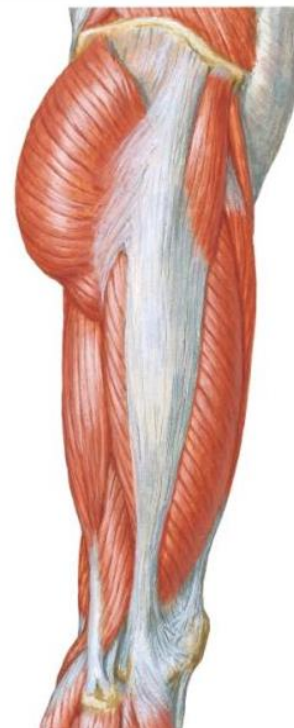
*F. Netter*  
1894

# Aducción de muslo

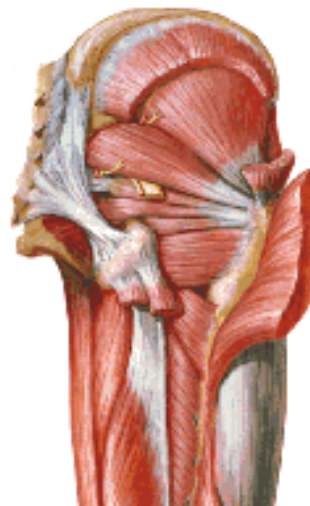




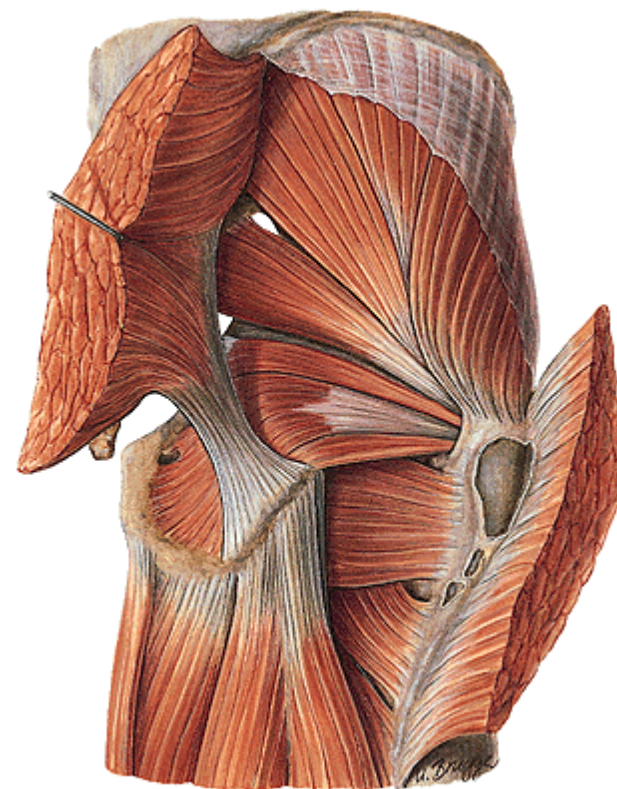
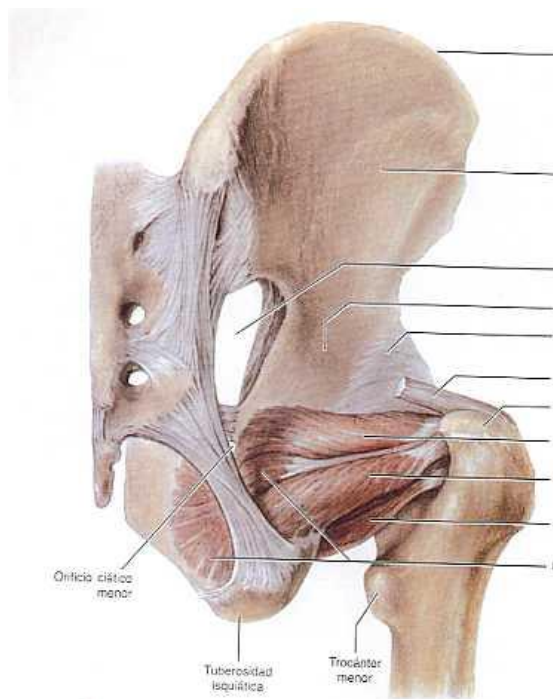
# Abducción de muslo



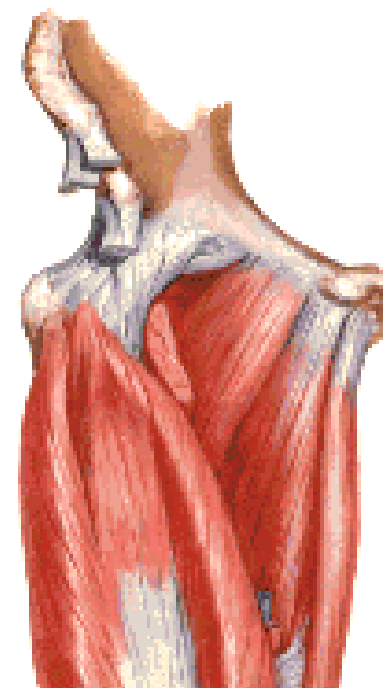
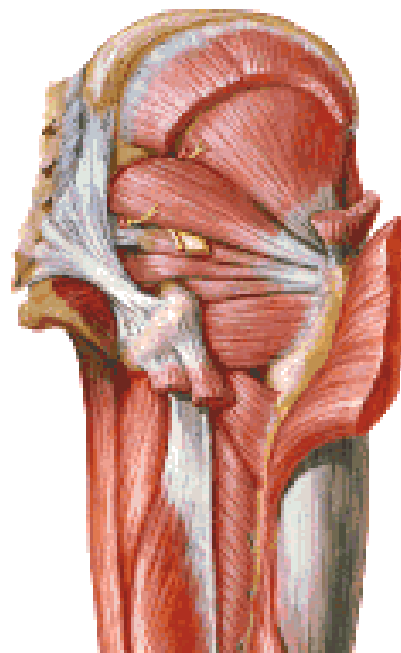
*F. Netter M.D.*  
1889



# Rotación lateral de muslo



# Rotación medial de muslo



*F. Netter*  
© 1994



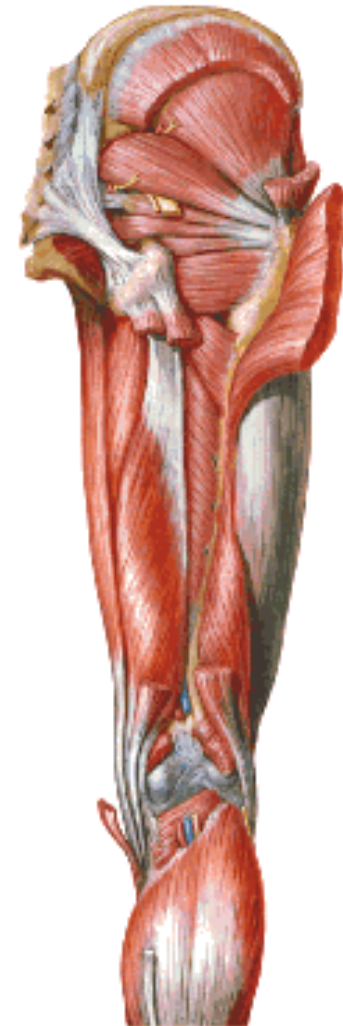
# Extensión de rodilla



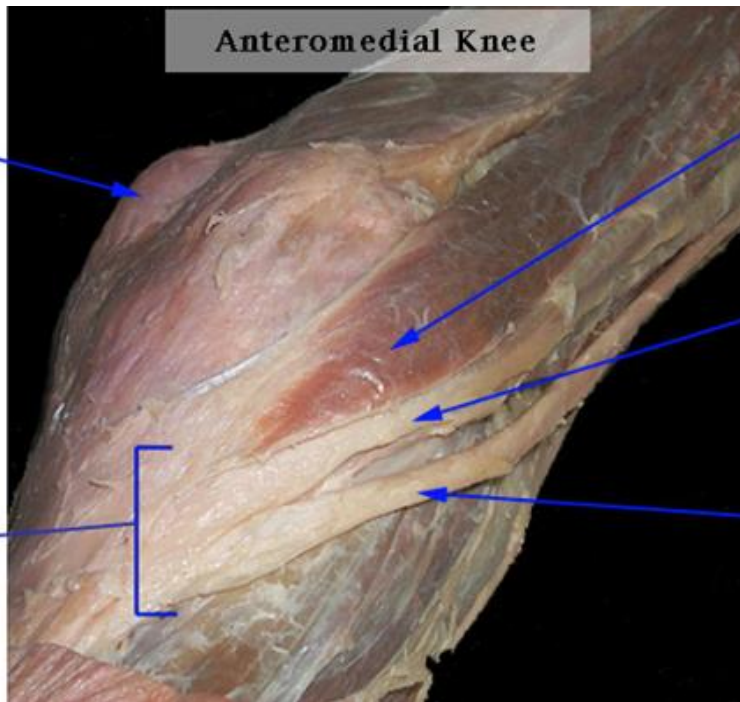
*F. Netter M.D.*  
1884



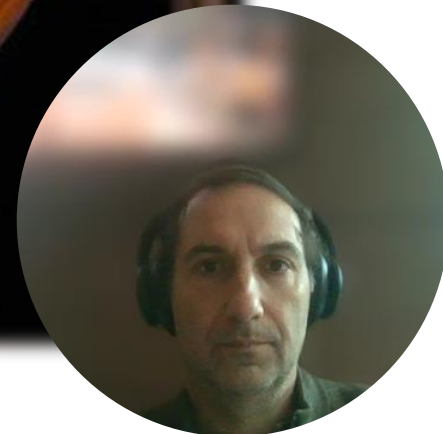
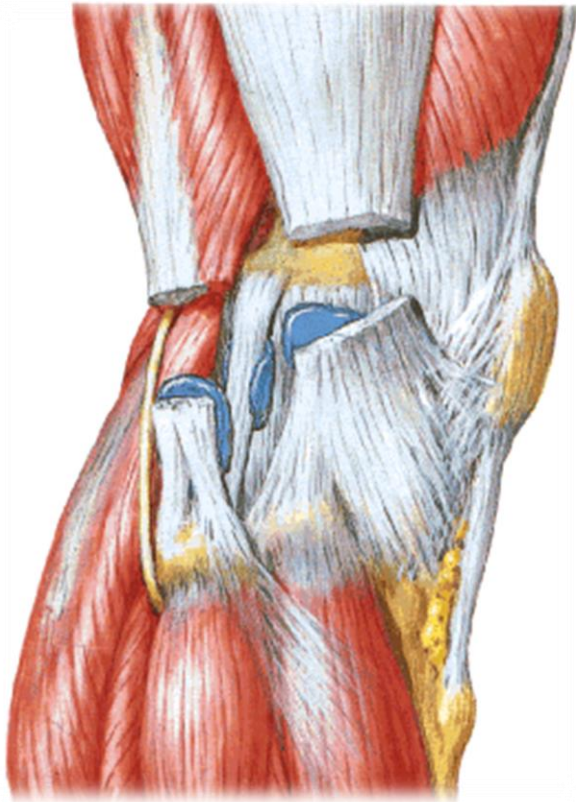
# Flexión de rodilla



# INSERCIONES TENDINOSAS DE LA CARA MEDIAL DE LA RODILLA

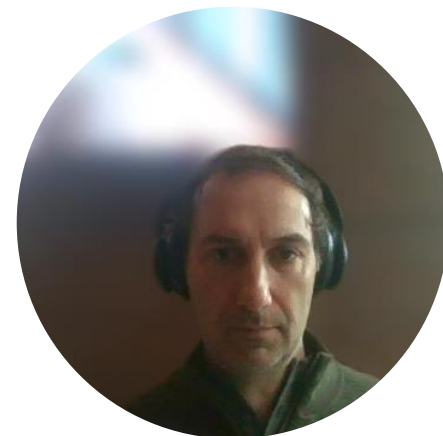
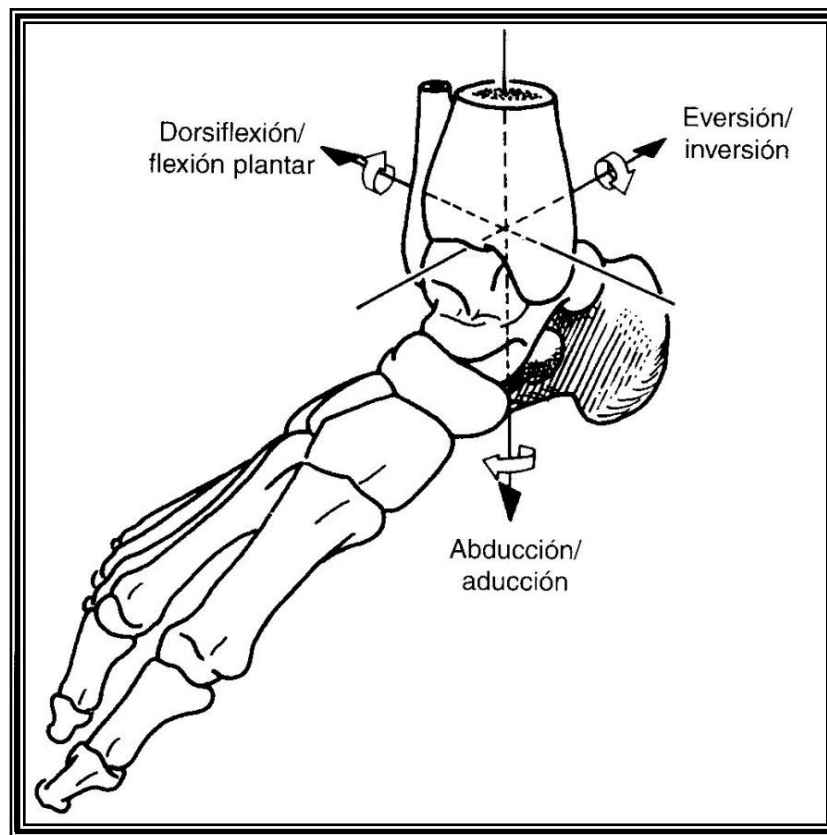


## INSERCIONES TENDINOSAS DE LA CARA LATERAL DE LA RODILLA





# Movimientos complejo tobillo y pie





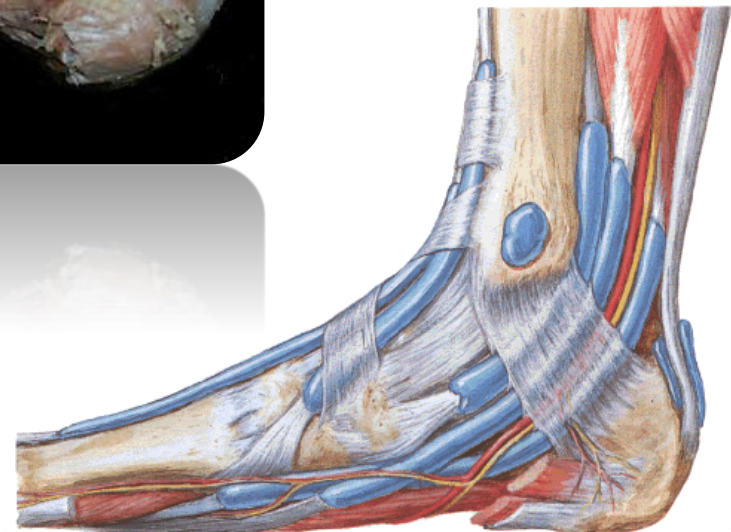
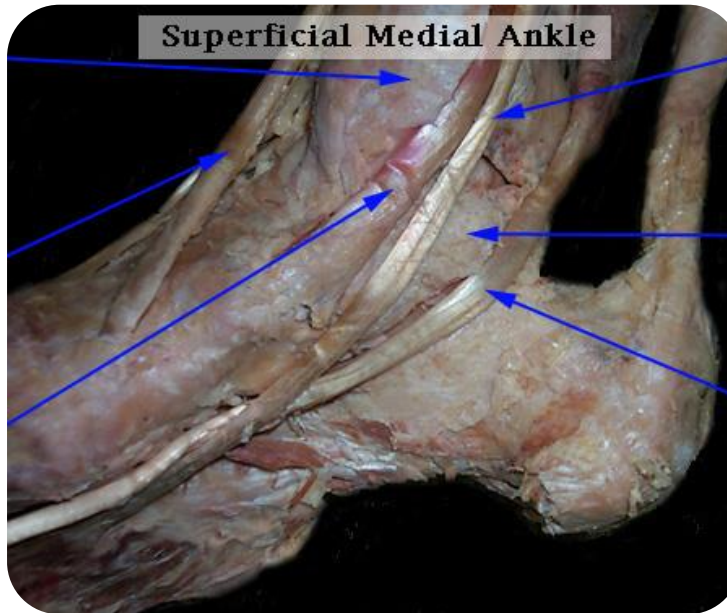
# Inversión



*F. Netter M.D.*  
1889



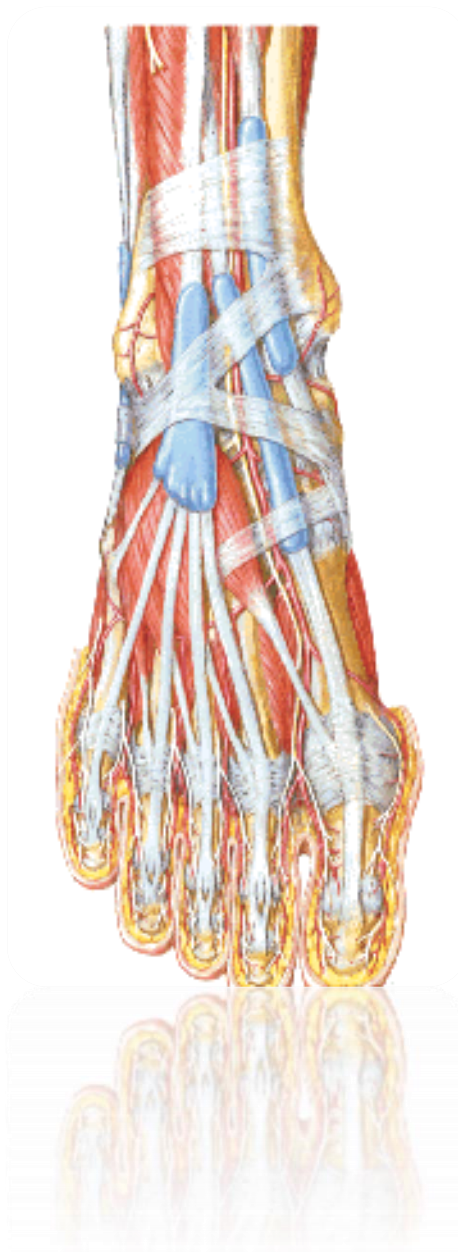
# Compartimientos tenosinoviales inversores



# Eversión

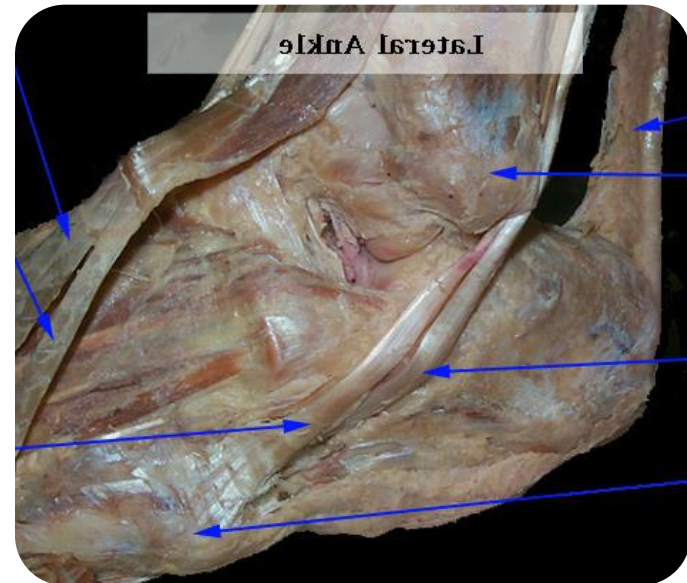


## Compartimientos tenosinoviales extensores



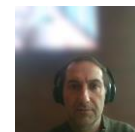
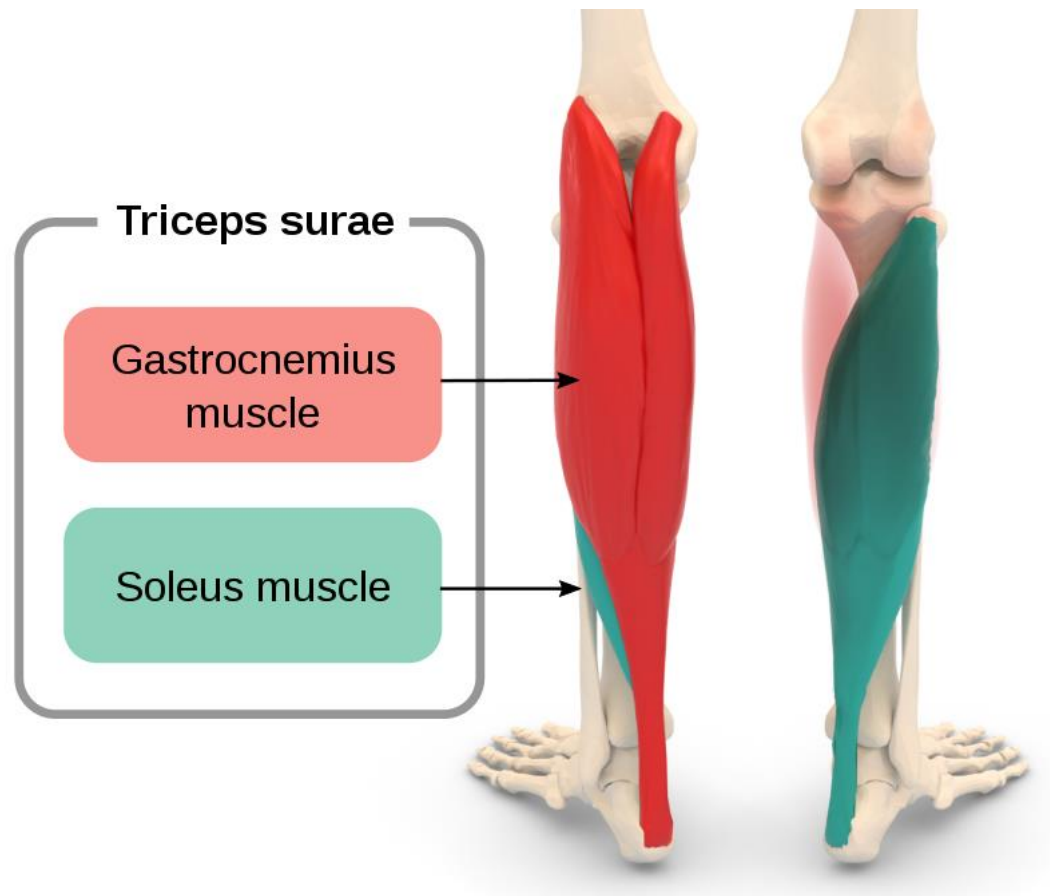


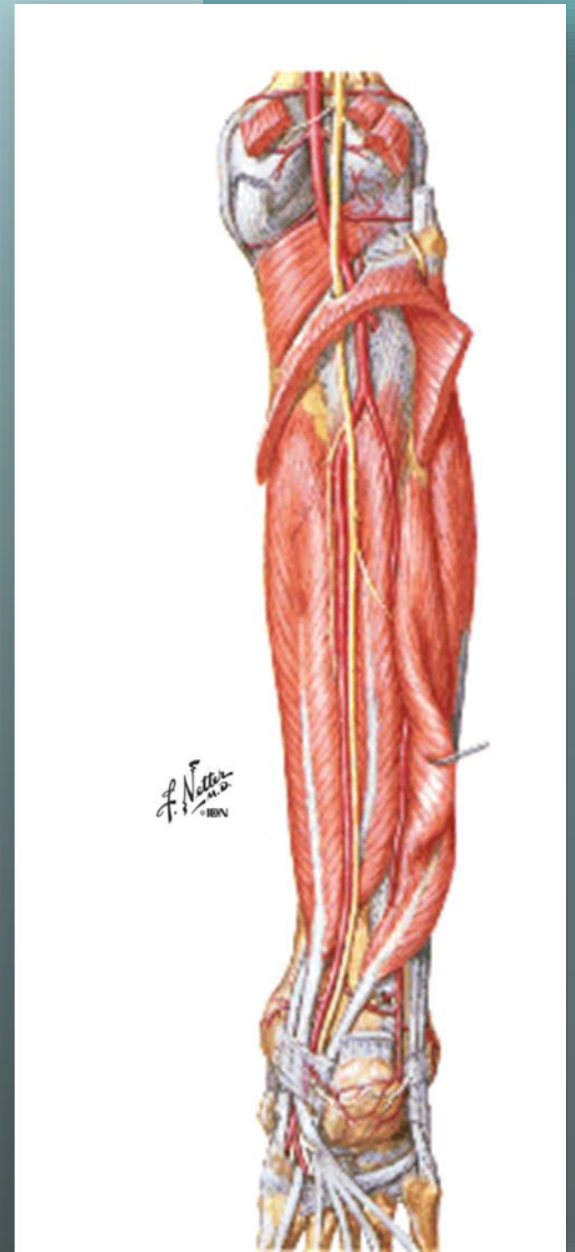
## Compartimientos tenosinoviales eversores

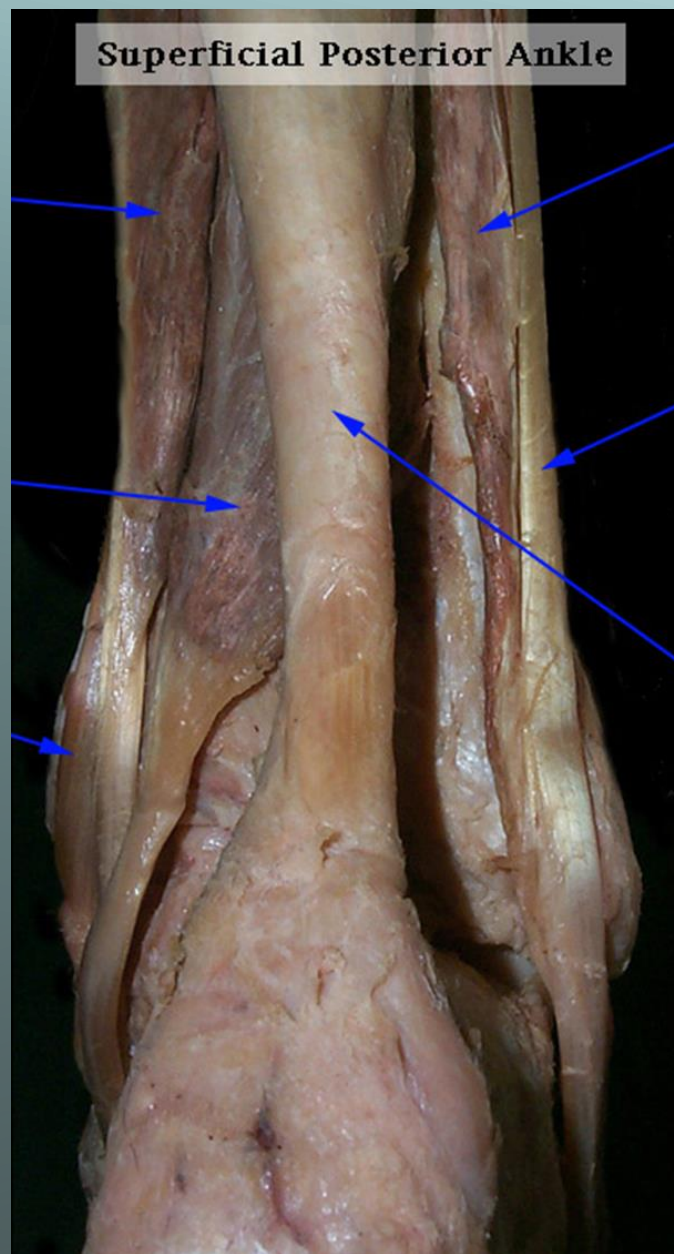




# Flexión Plantar

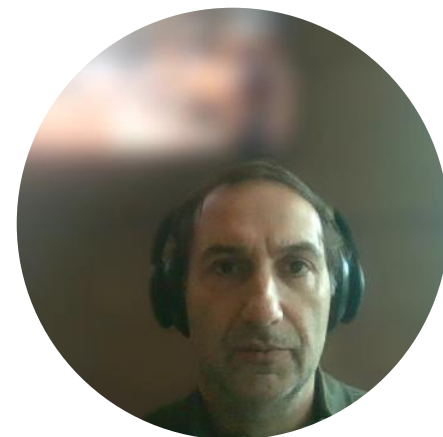






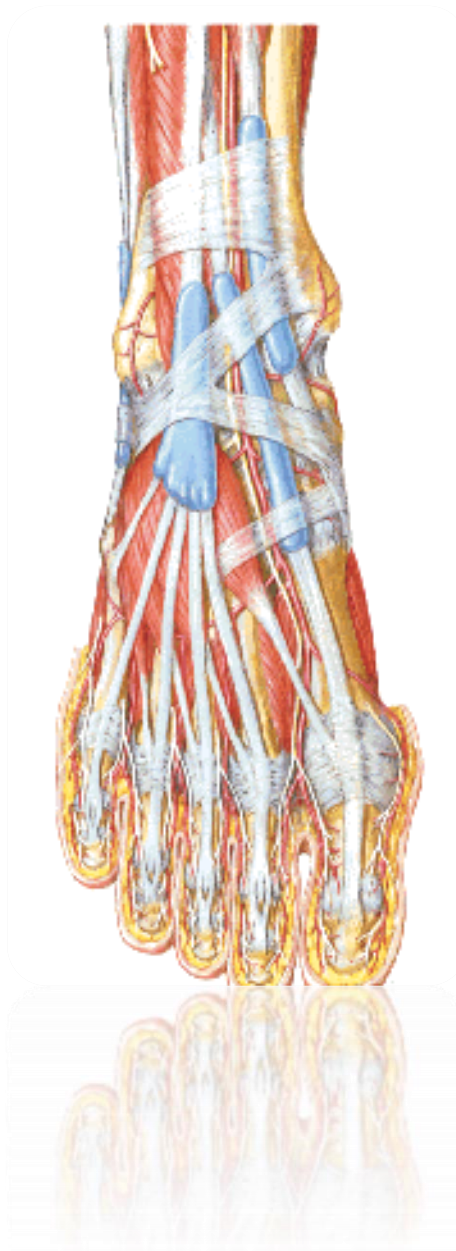
# Flexión Dorsal

*F. Netter  
M.D.  
1884*





## Compartimientos tenosinoviales extensores



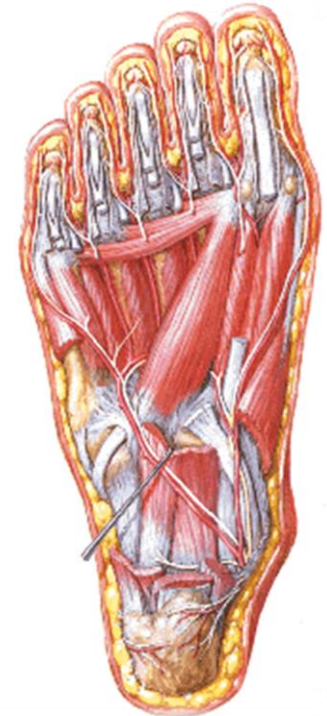




Departamento  
de Anatomía y Medicina Legal  
FACULTAD DE MEDICINA  
UNIVERSIDAD DE CHILE

# MÚSCULOS PLANTARES

*F. Netter*  
© 1974



# MÚSCULOS DORSALES



Departamento  
de Anatomía y Medicina Legal  
FACULTAD DE MEDICINA  
UNIVERSIDAD DE CHILE

