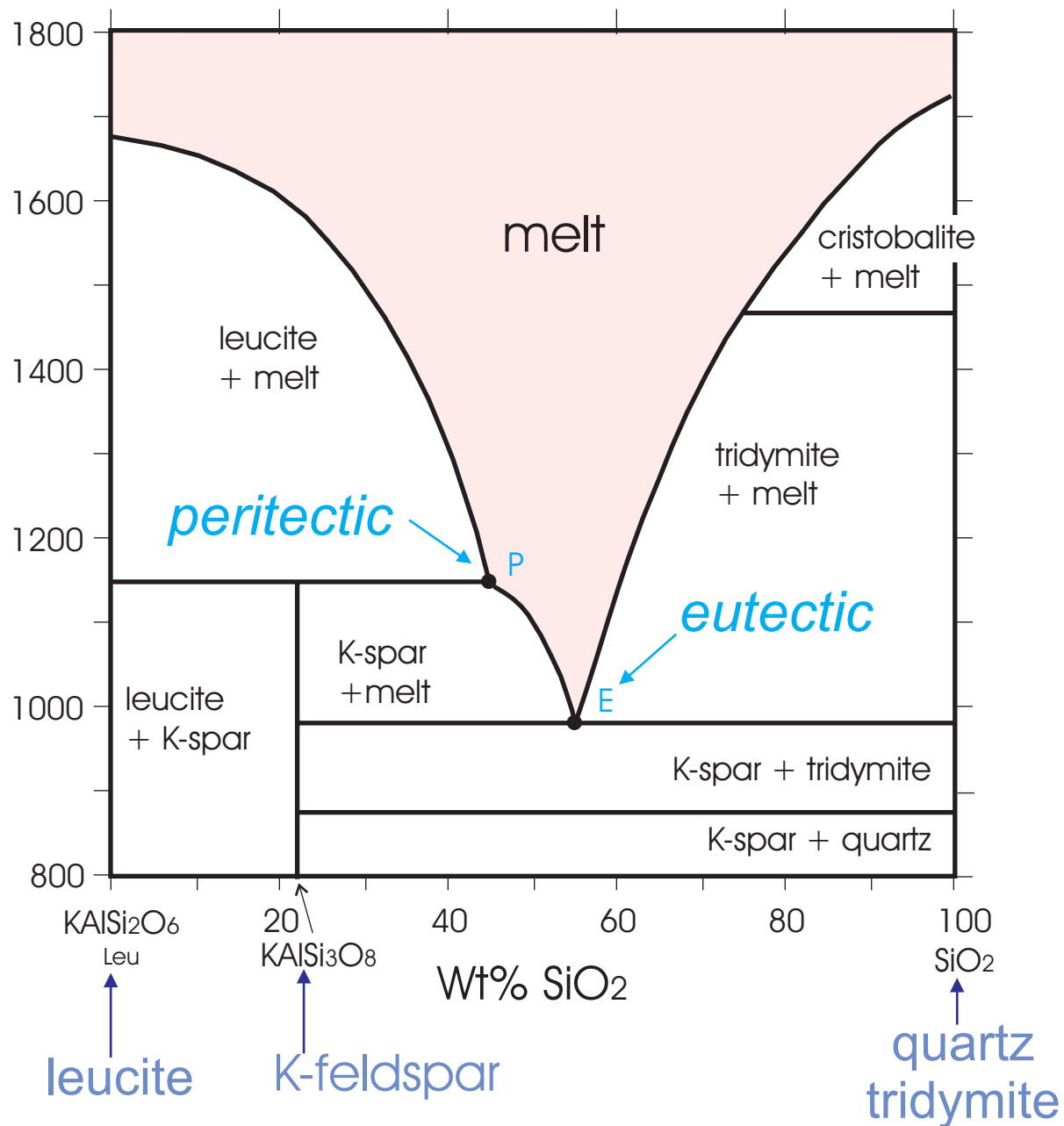
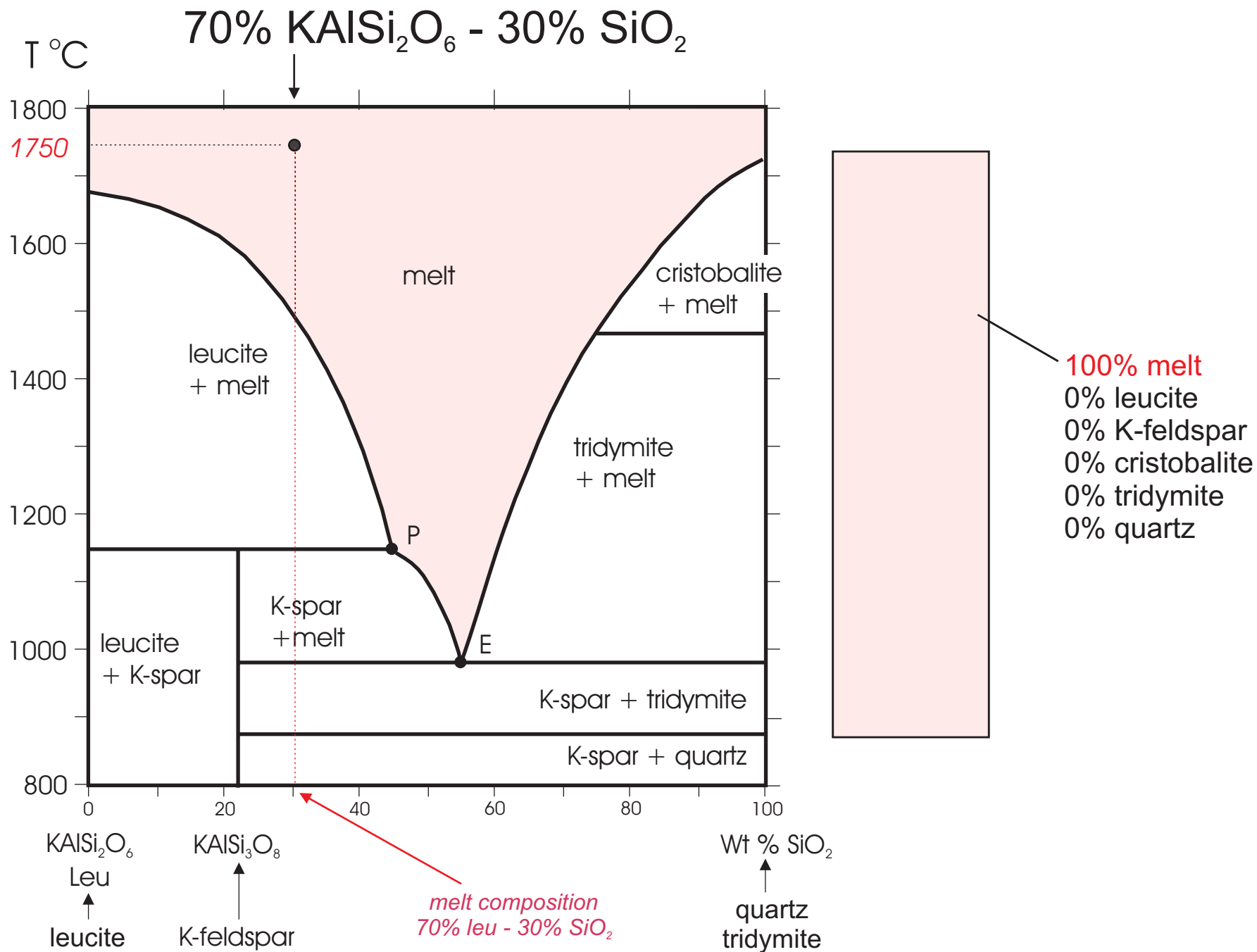
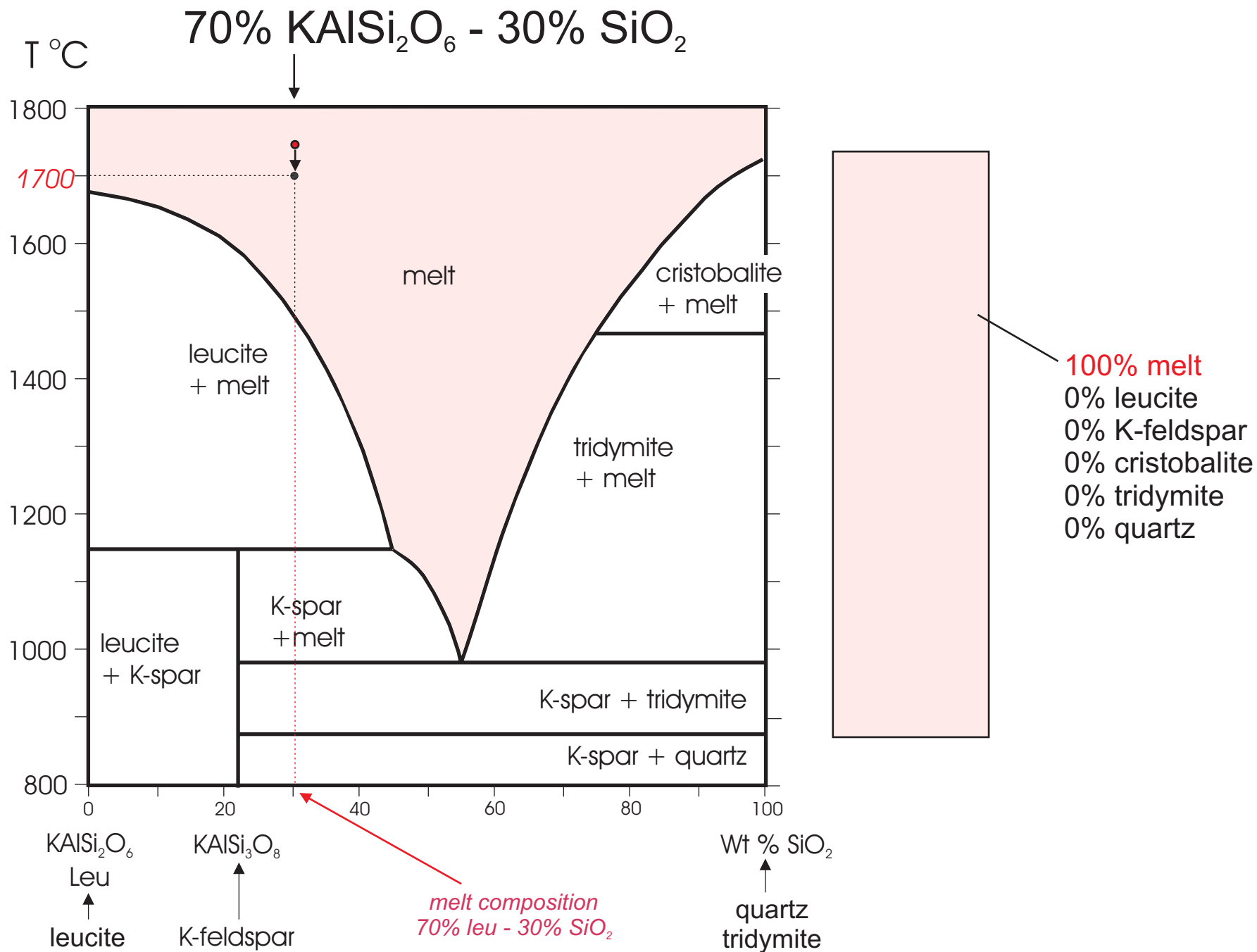
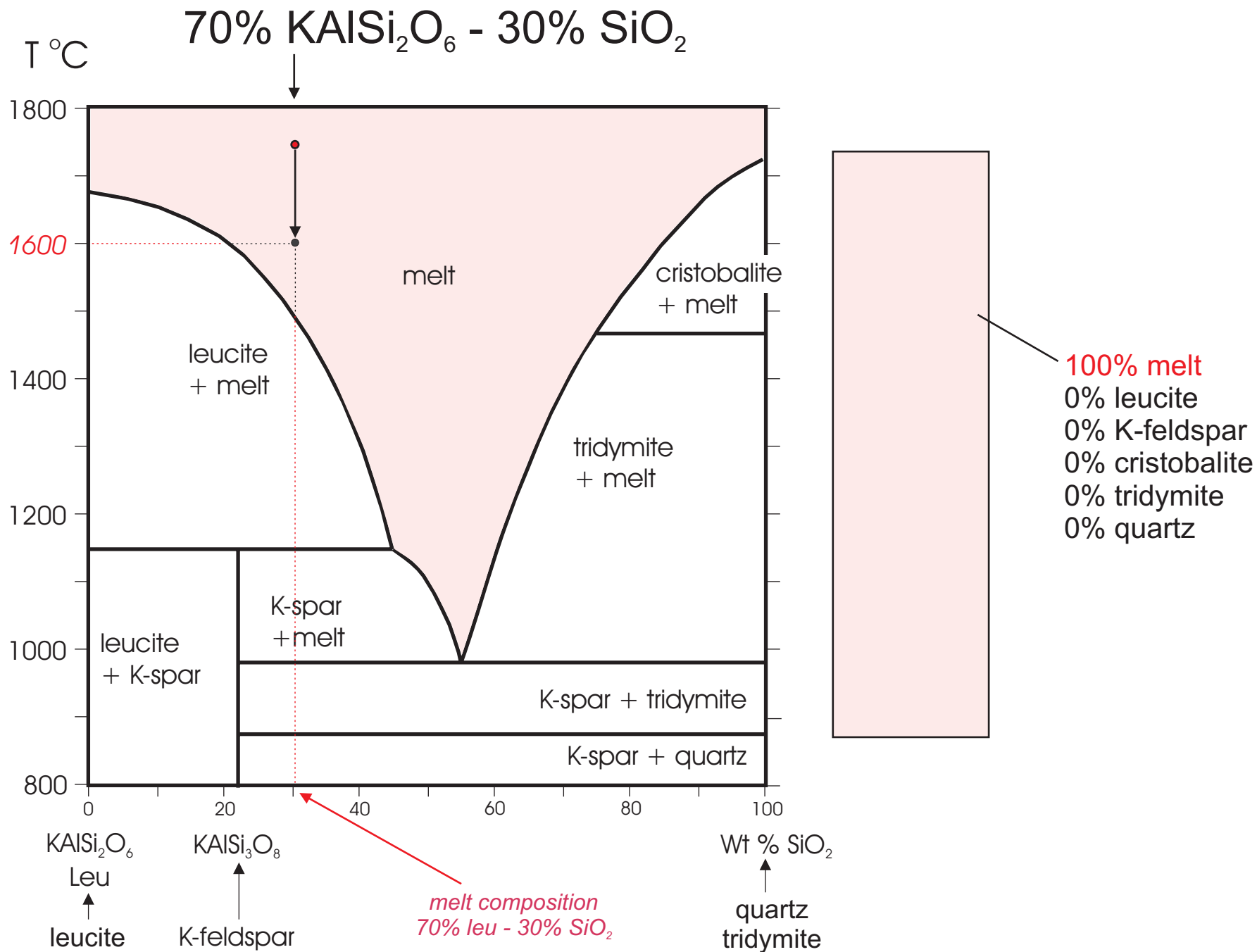


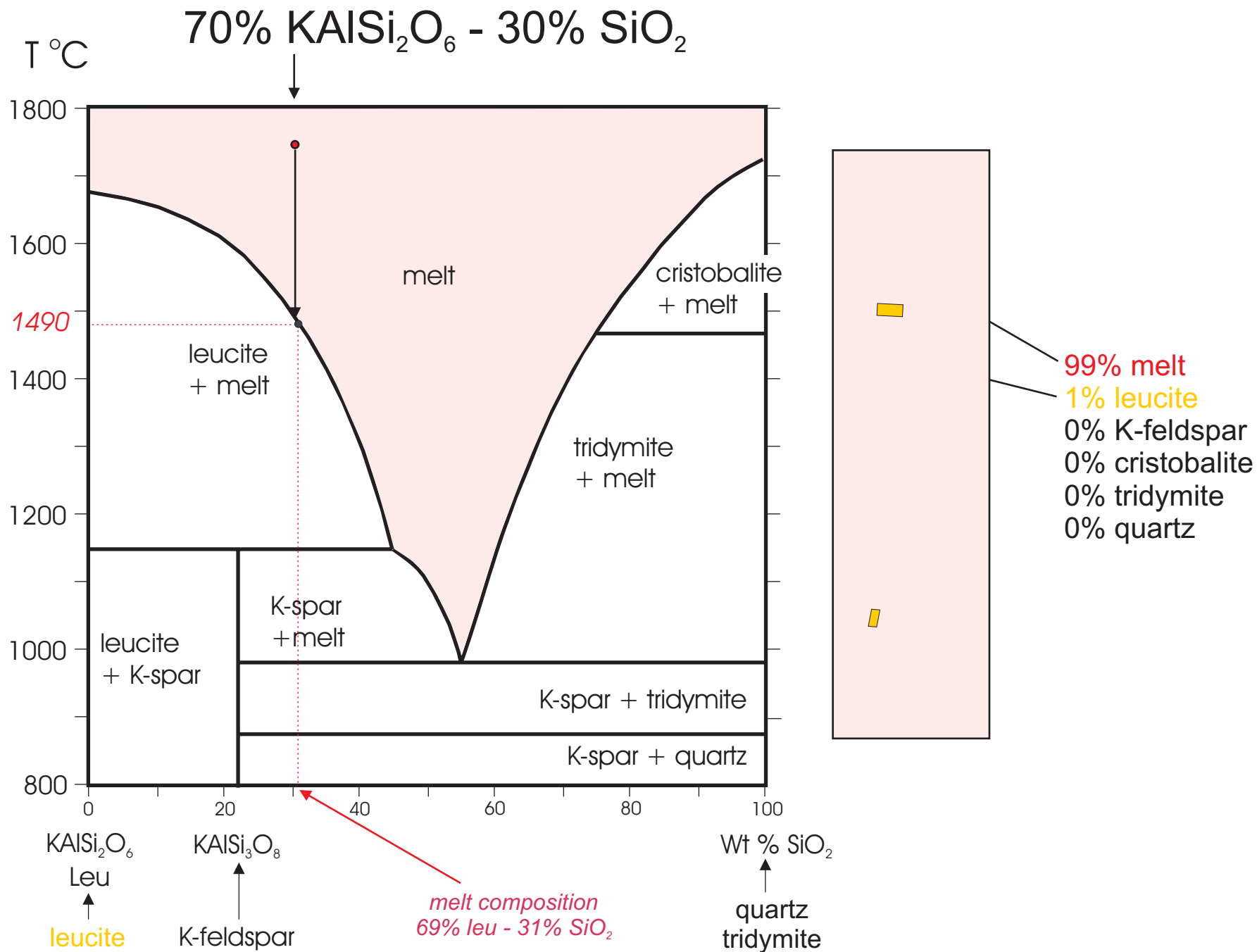
$\text{KAlSi}_2\text{O}_6 - \text{SiO}_2$

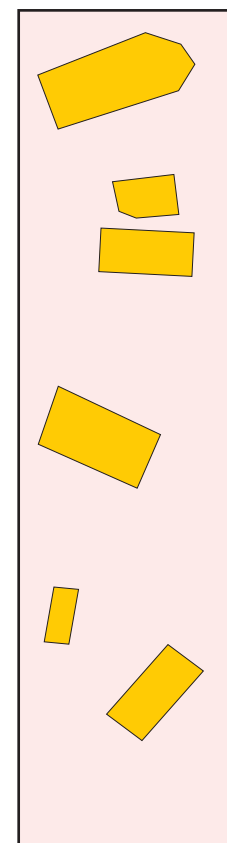
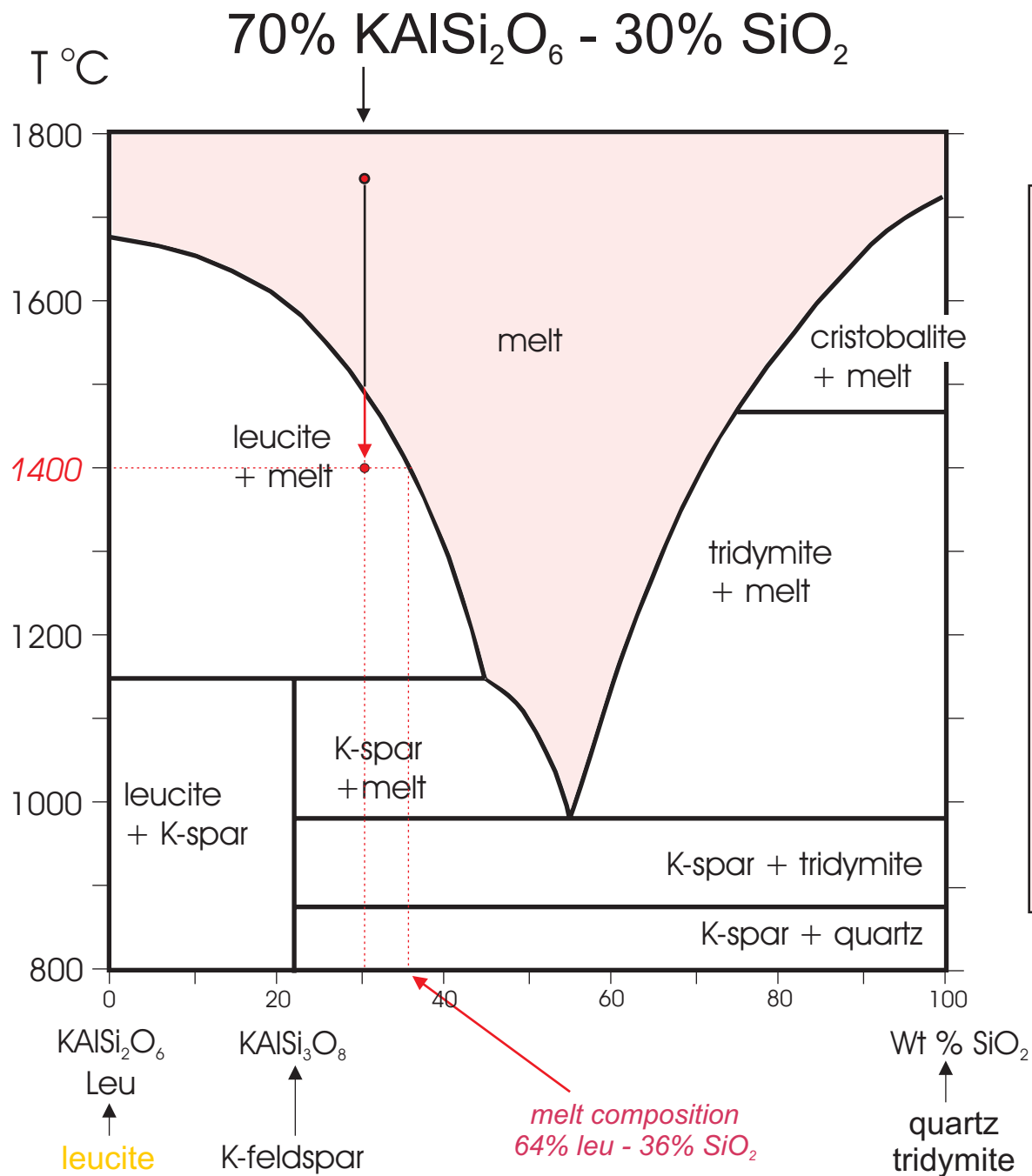




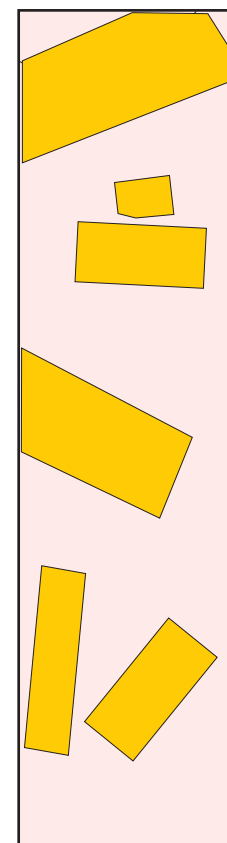
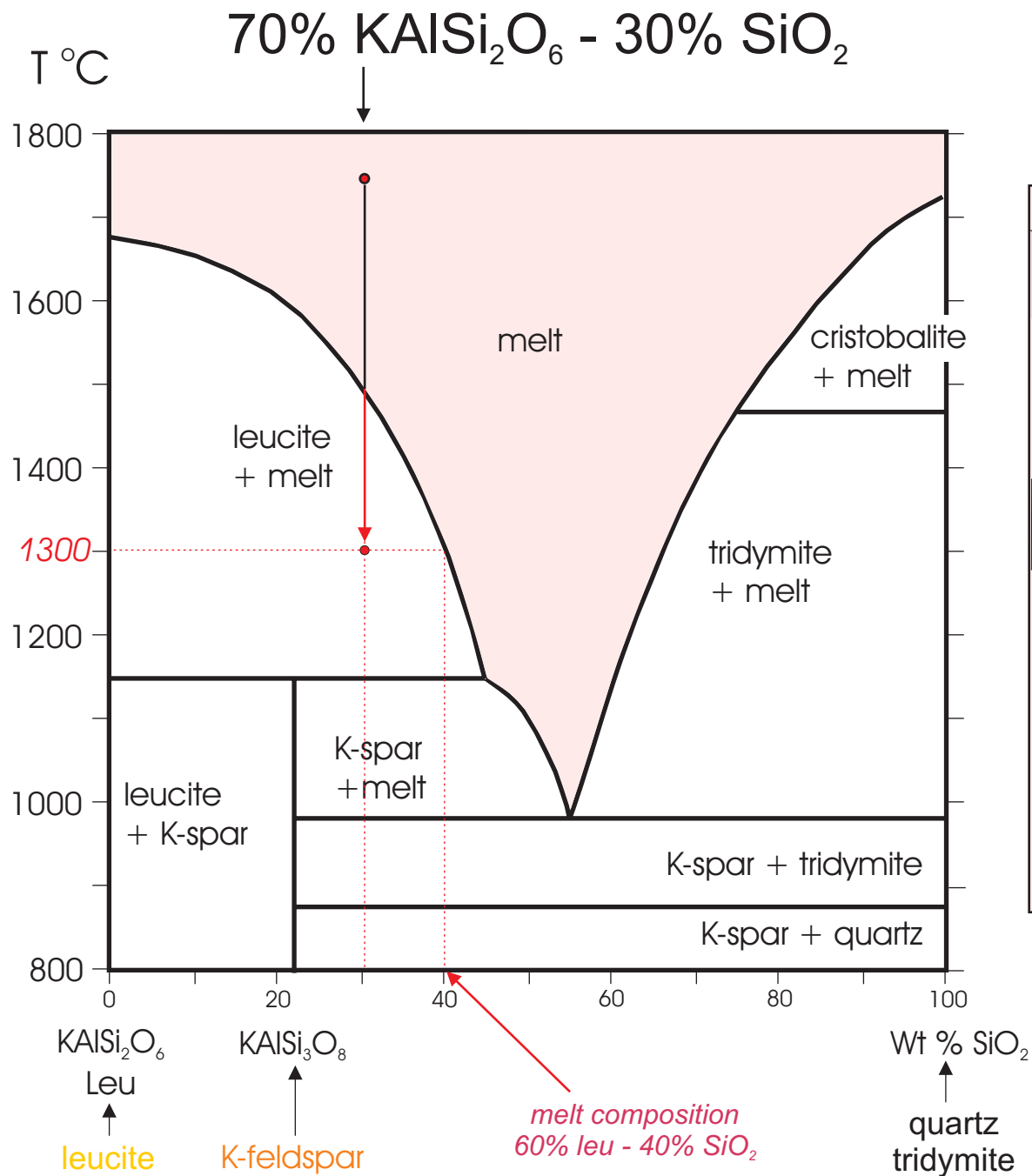




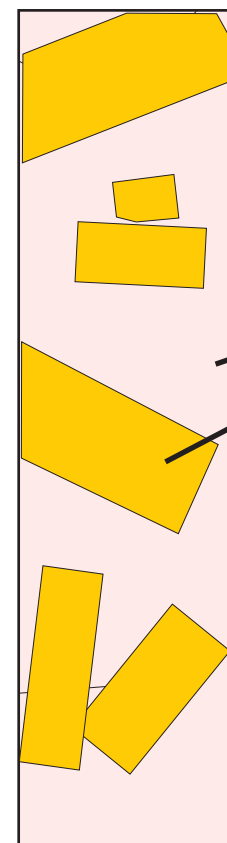
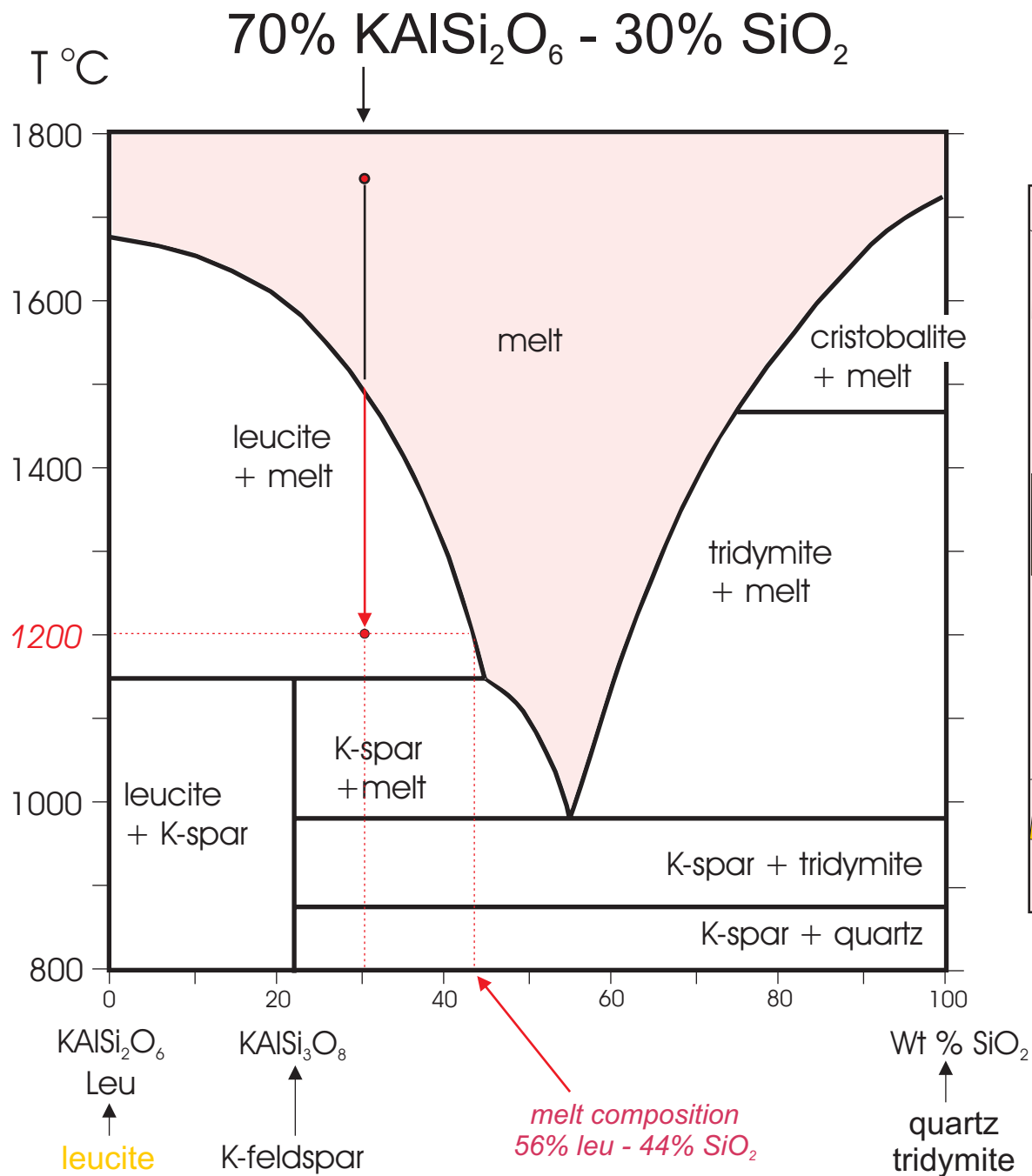


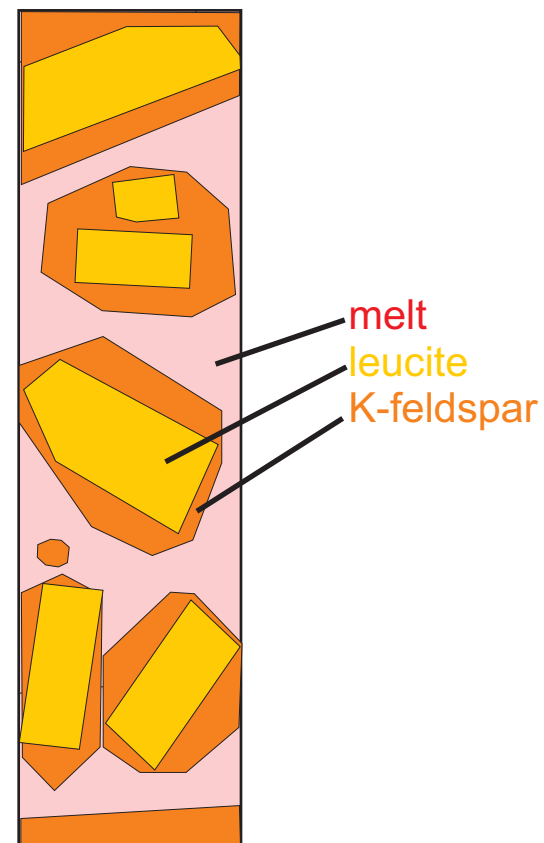
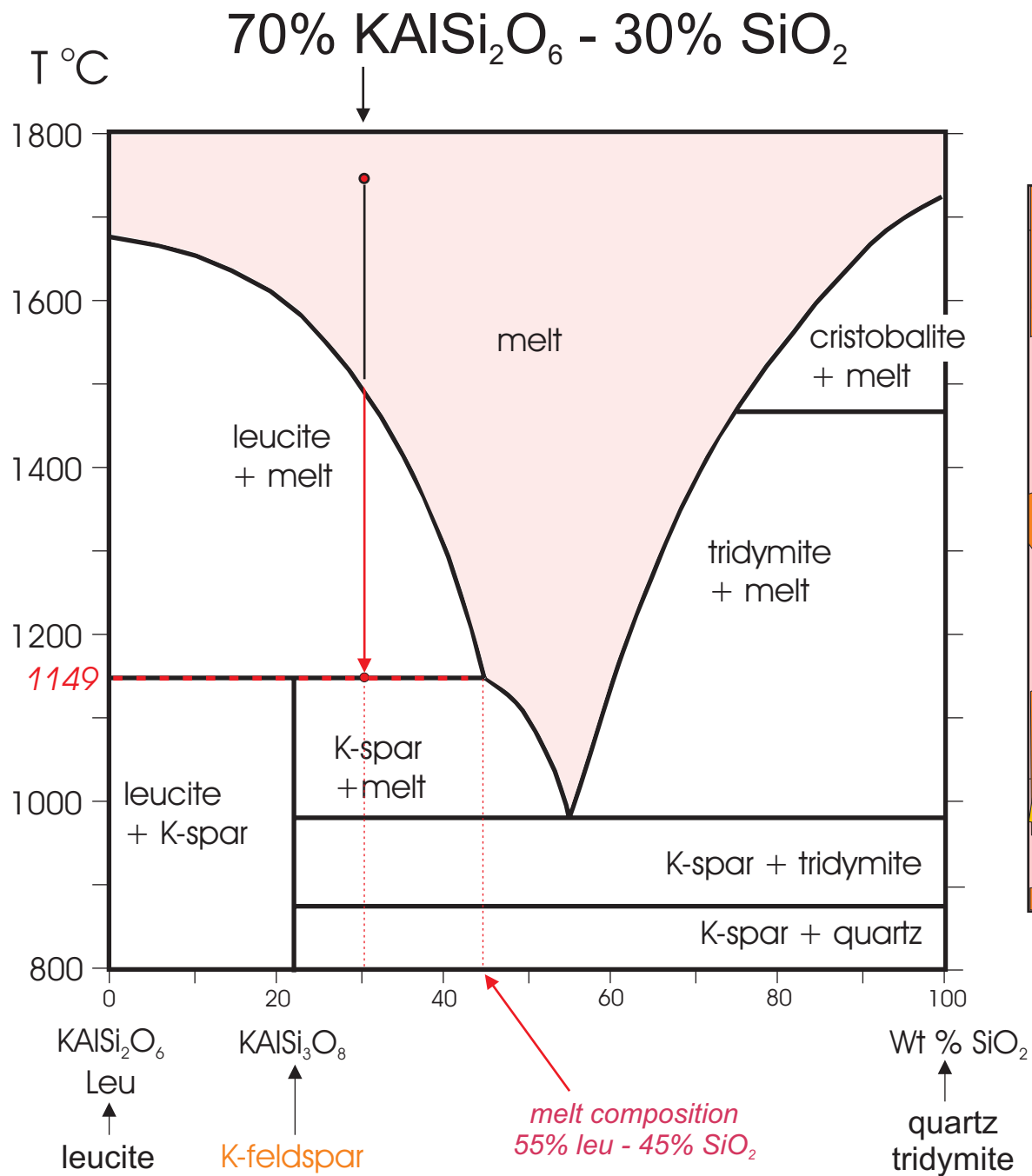


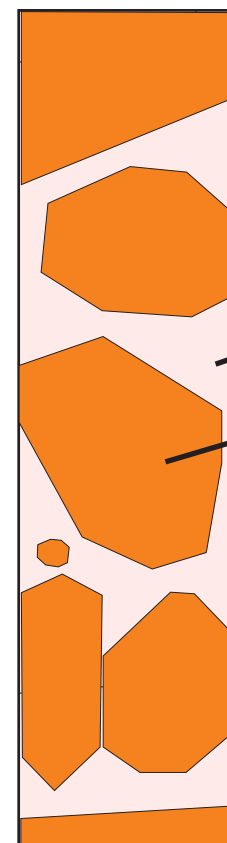
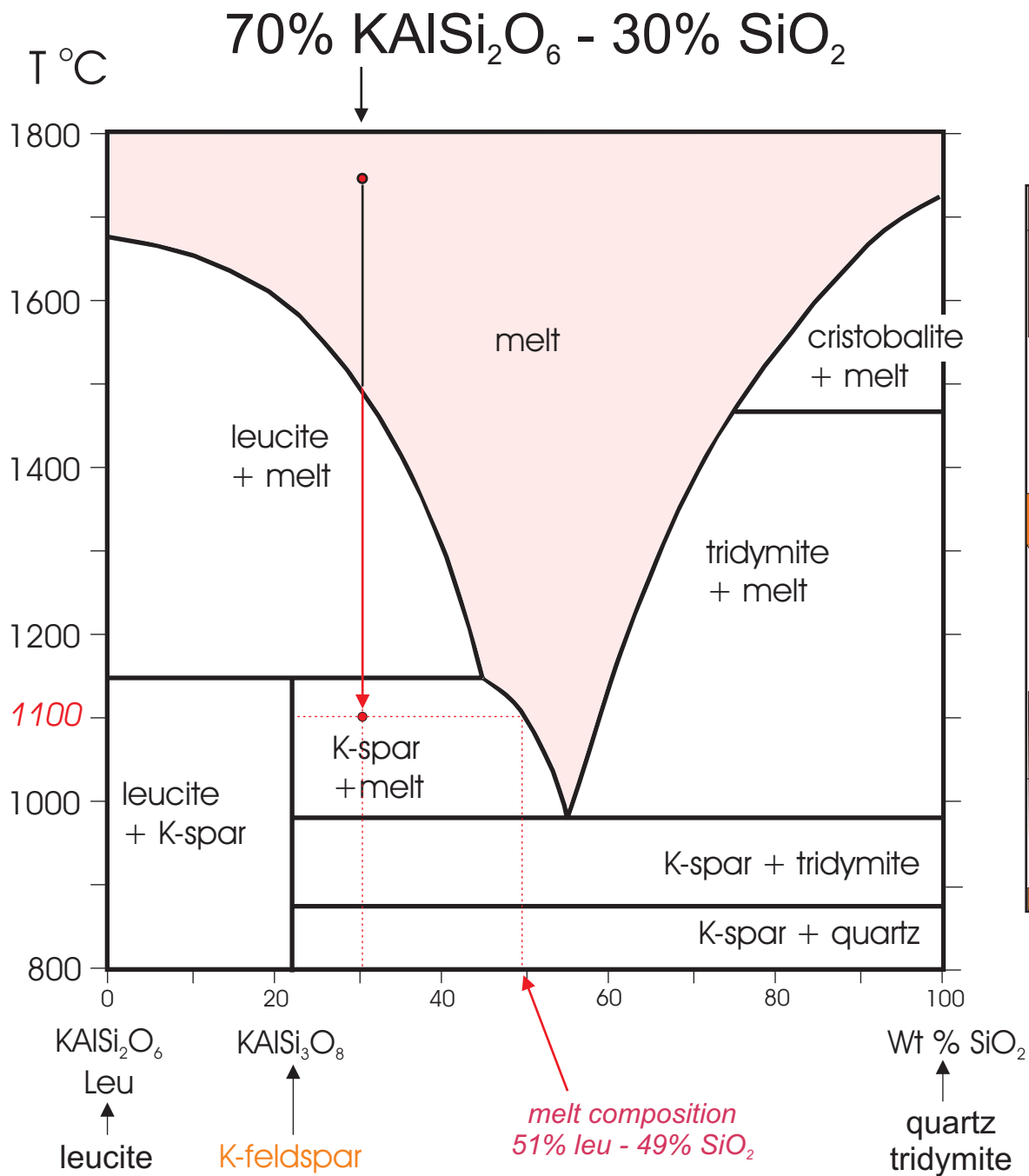
83% melt
17% leucite
0% K-feldspar
0% cristobalite
0% tridymite
0% quartz

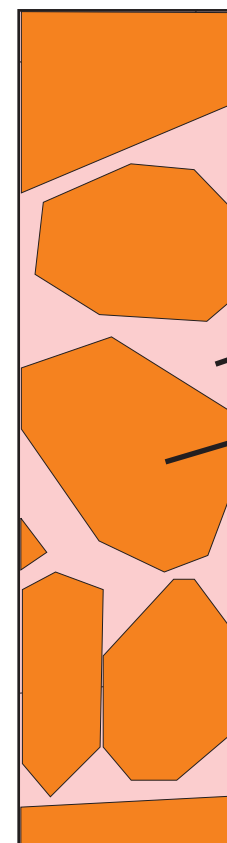
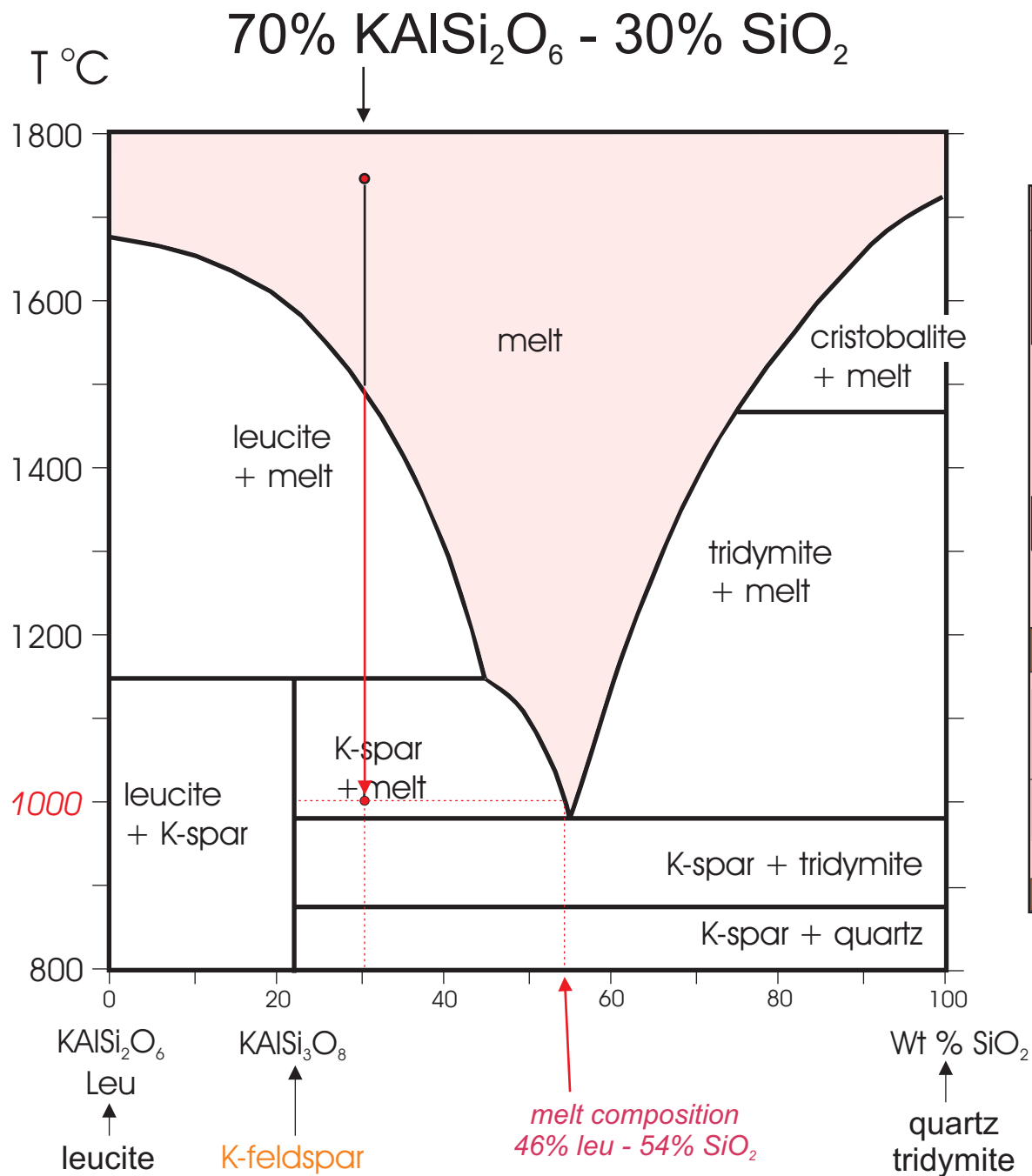


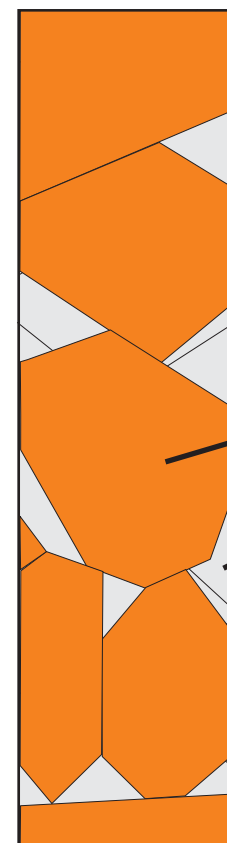
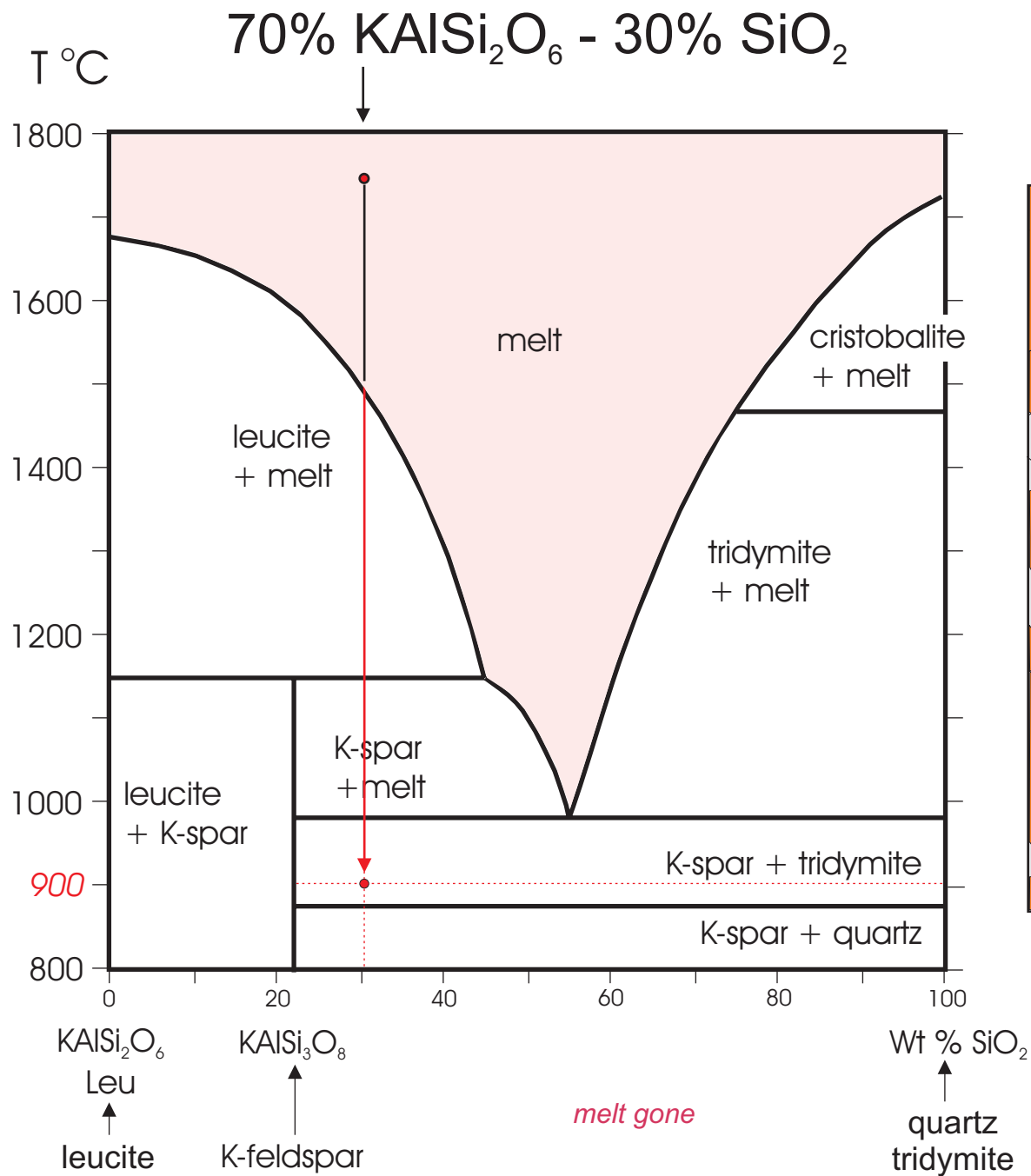
75% melt
25% leucite
0% K-feldspar
0% cristobalite
0% tridymite
0% quartz



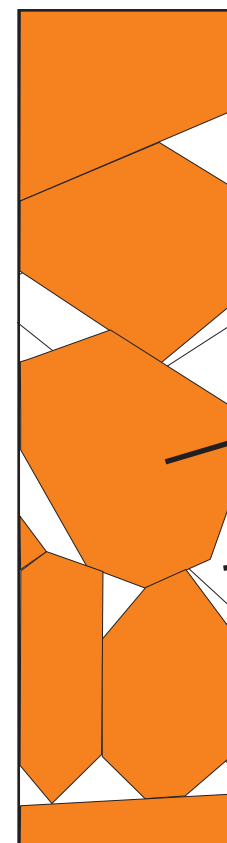
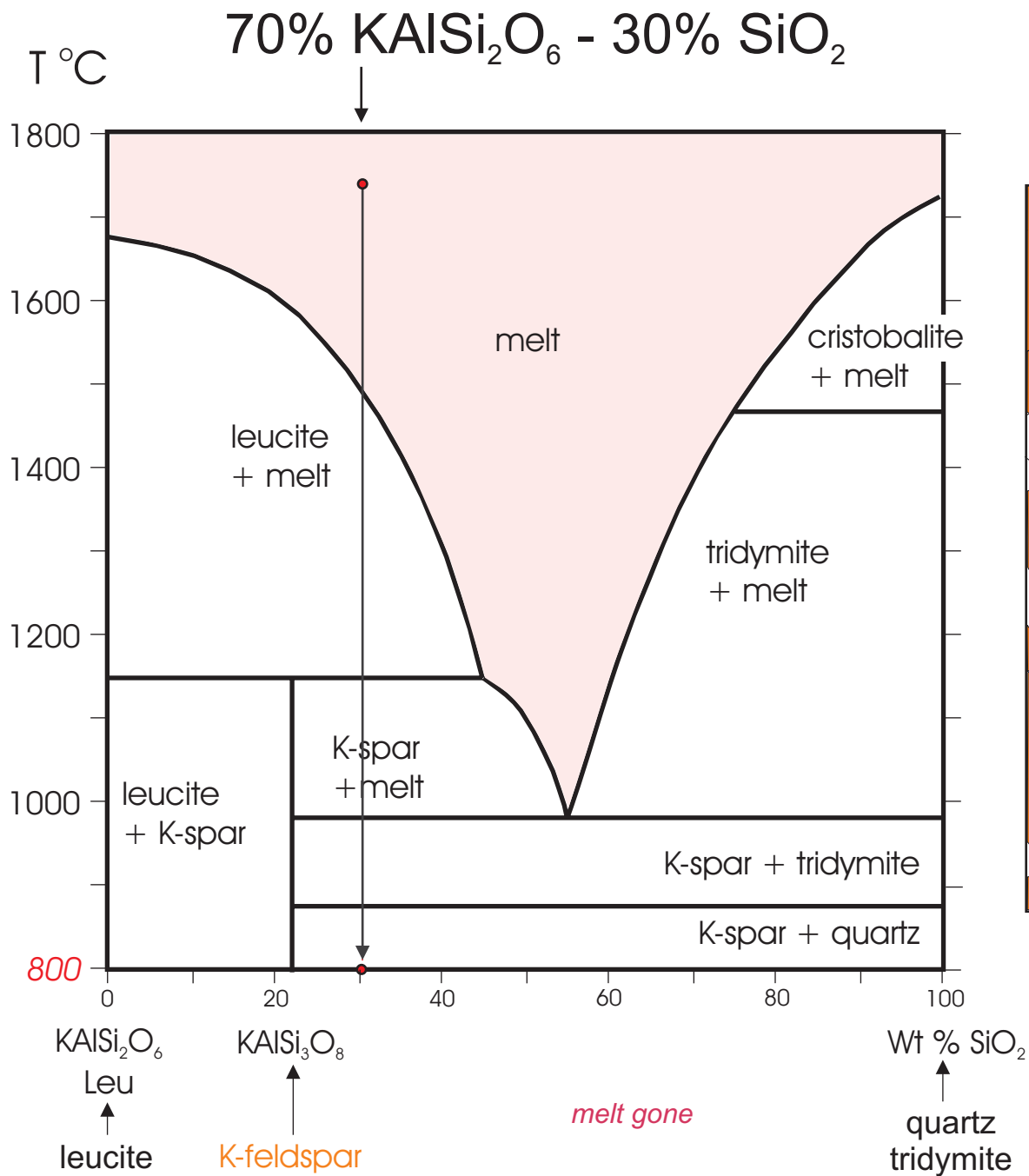








0% melt
0% leucite
90% K-feldspar
0% cristobalite
10% tridymite
0% quartz



0% melt
0% leucite
90% K-feldspar
0% cristobalite
0% tridymite
10% quartz