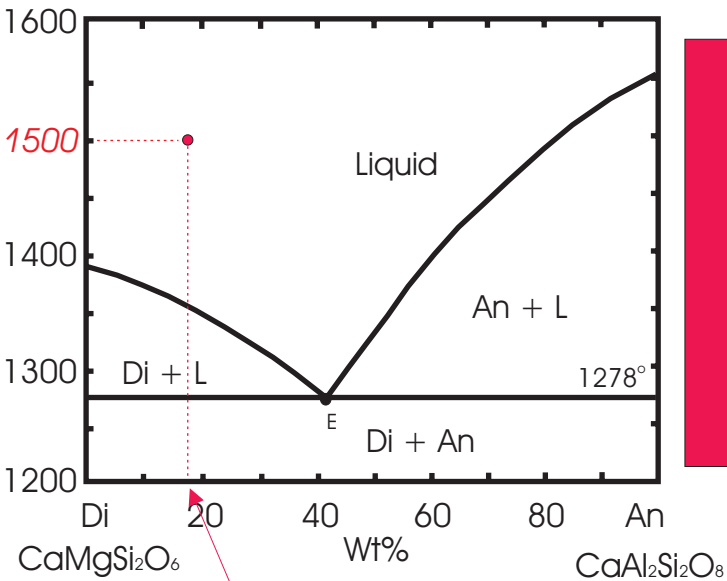


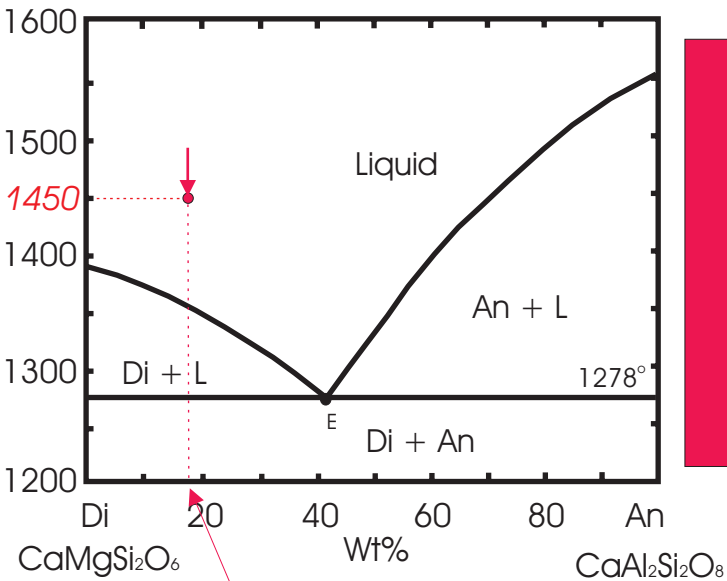
T °C



100%
liquid

liquid composition is 18% An-82% Di

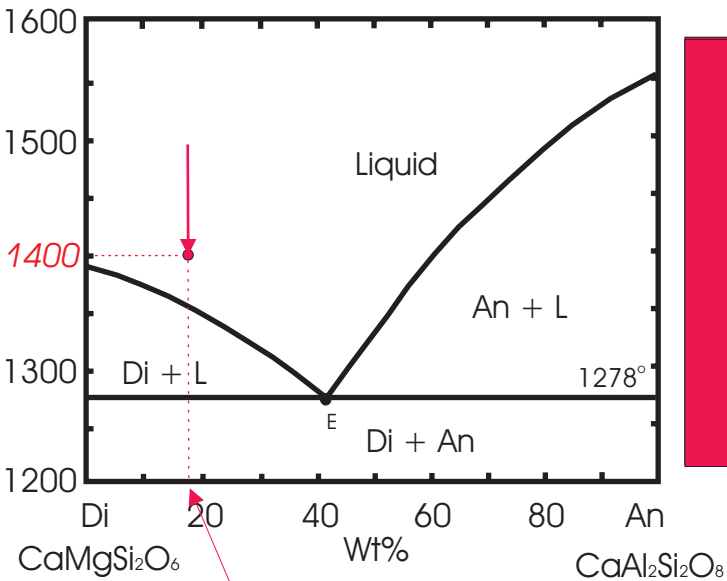
T °C



100%
liquid

liquid composition is 18% An-82% Di

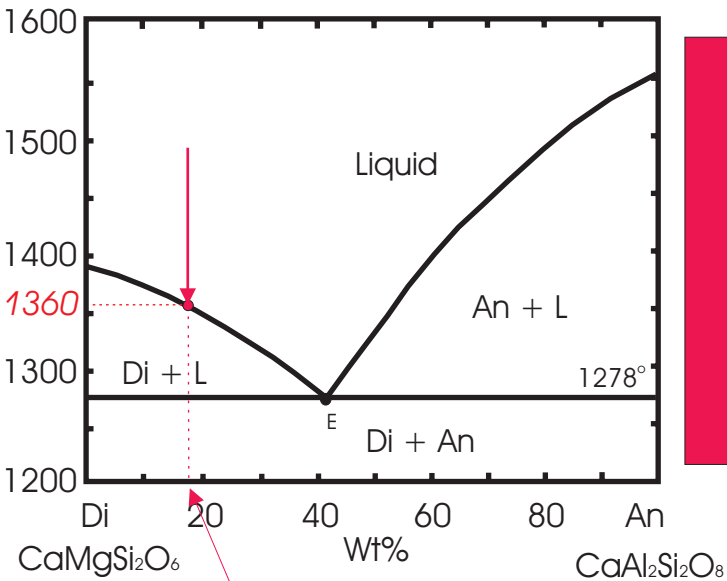
T °C



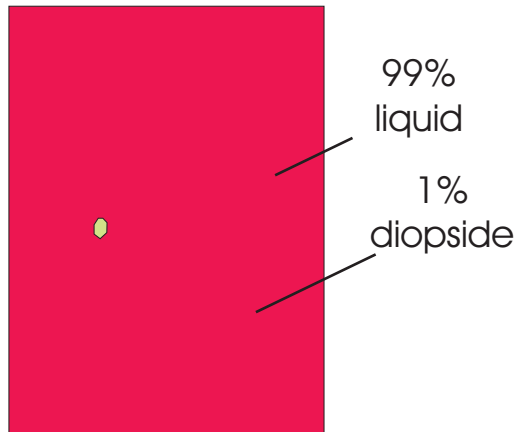
100%
liquid

liquid composition is 18% An-82% Di

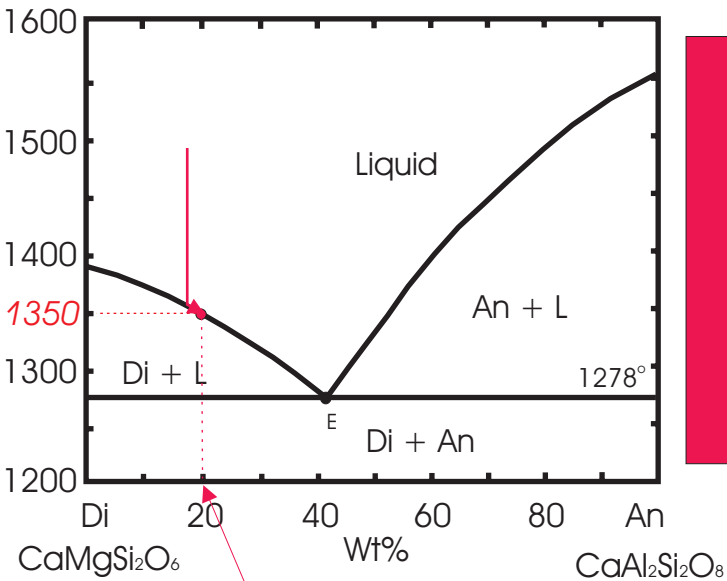
T °C



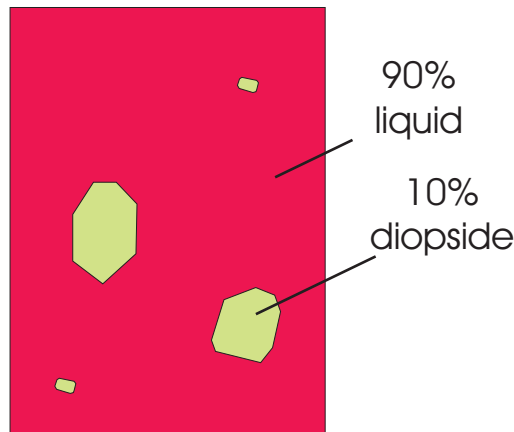
liquid composition is 18% An-82% Di



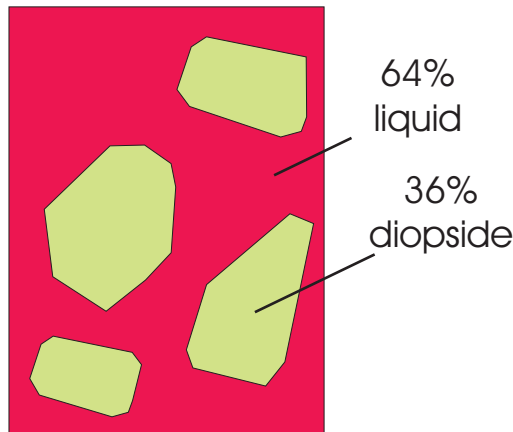
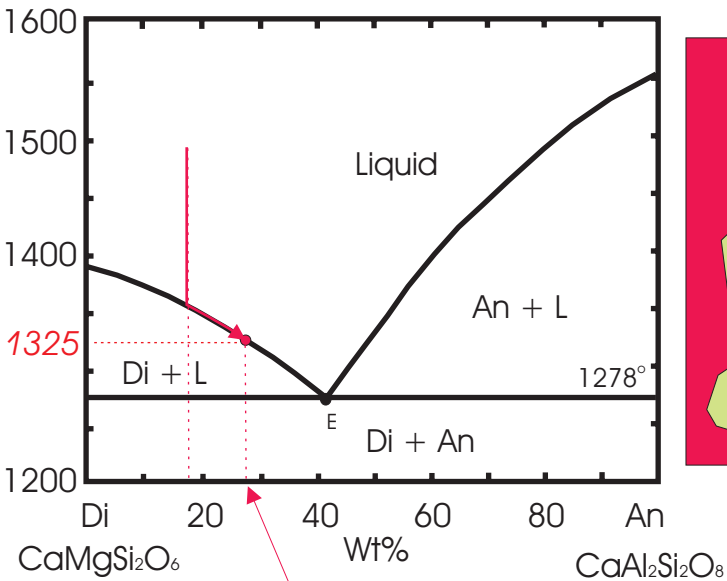
T °C



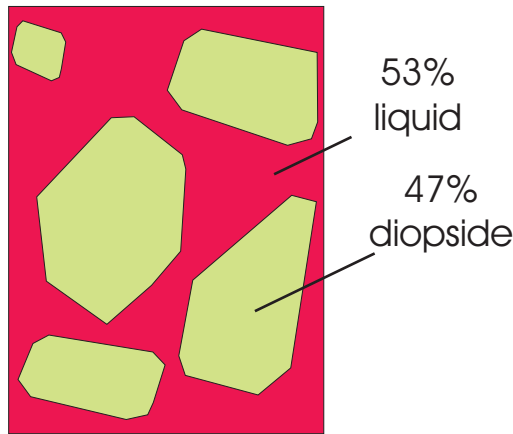
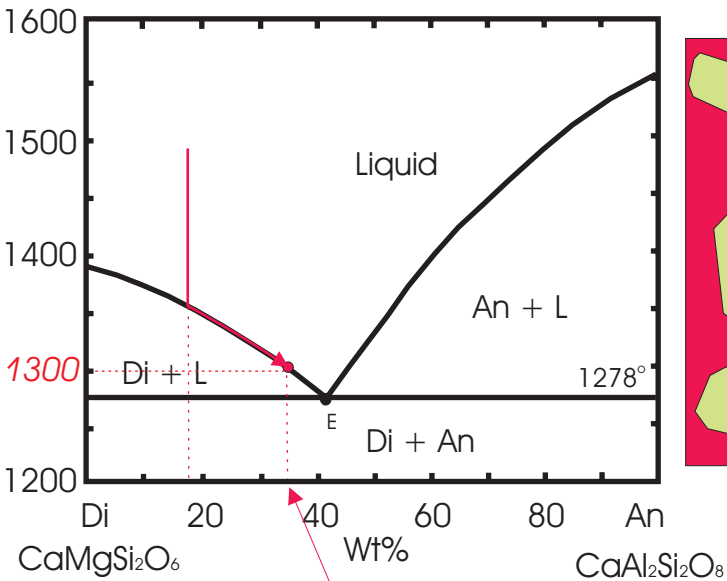
liquid composition is 20% An-80% Di



$T^{\circ}\text{C}$

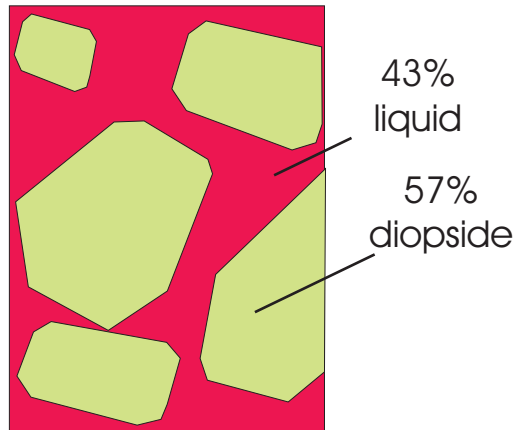
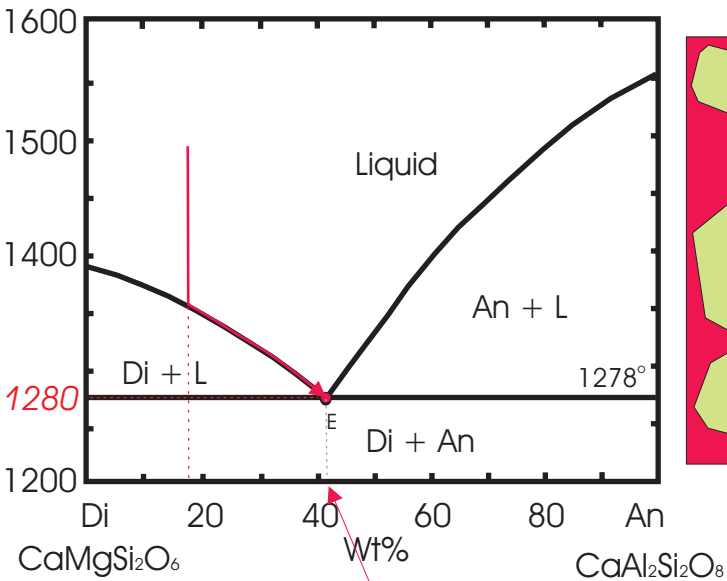


T °C



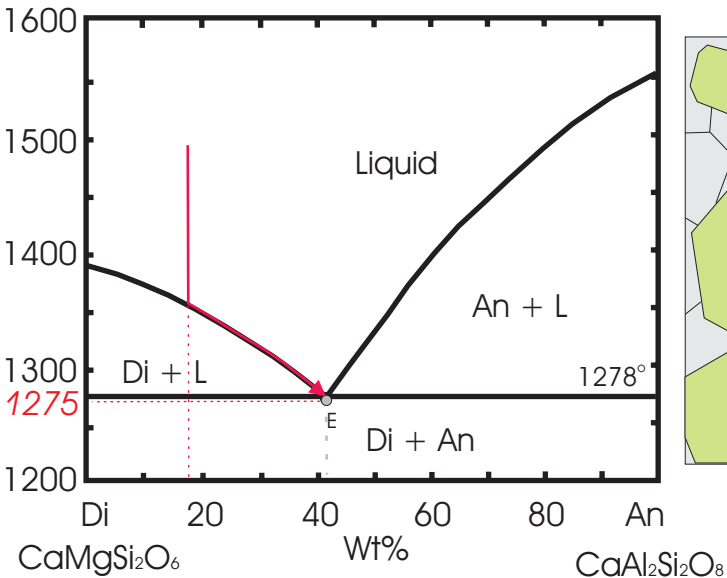
liquid composition is 34% An-66% Di

T °C



liquid composition is 42% An-58% Di

T °C

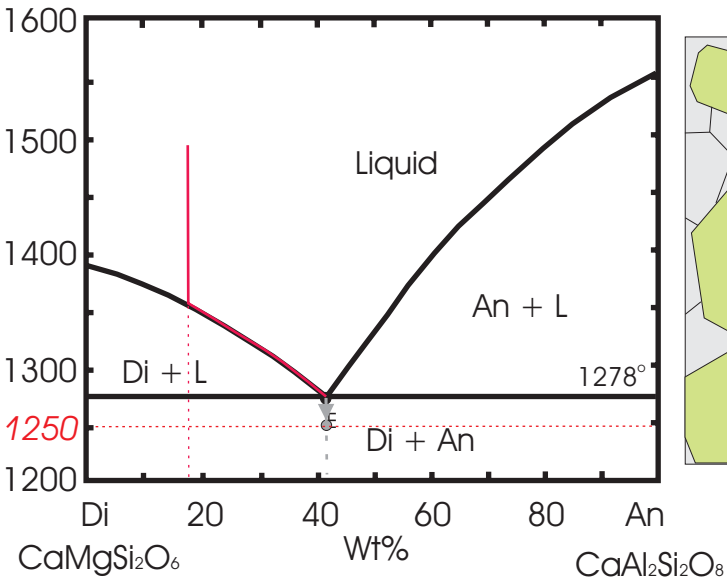


18%
anorthite

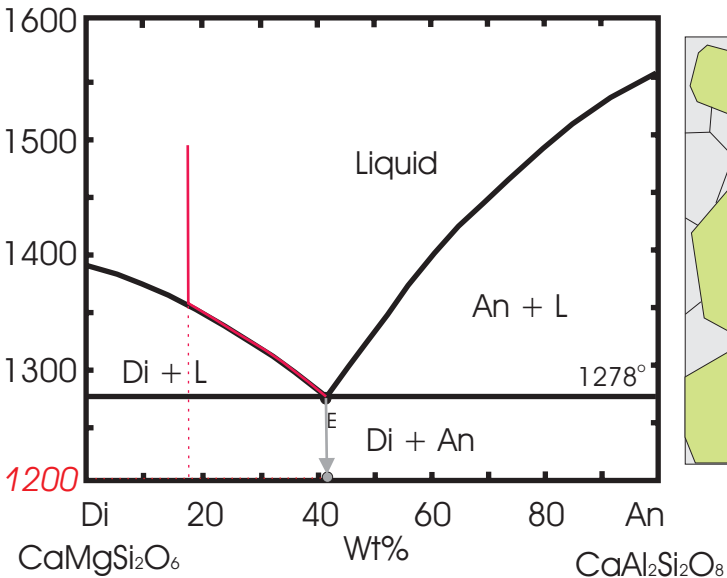
82%
diopside

liquid all gone

T °C



$T^{\circ}\text{C}$



18%
anorthite

82%
diopside

liquid all gone