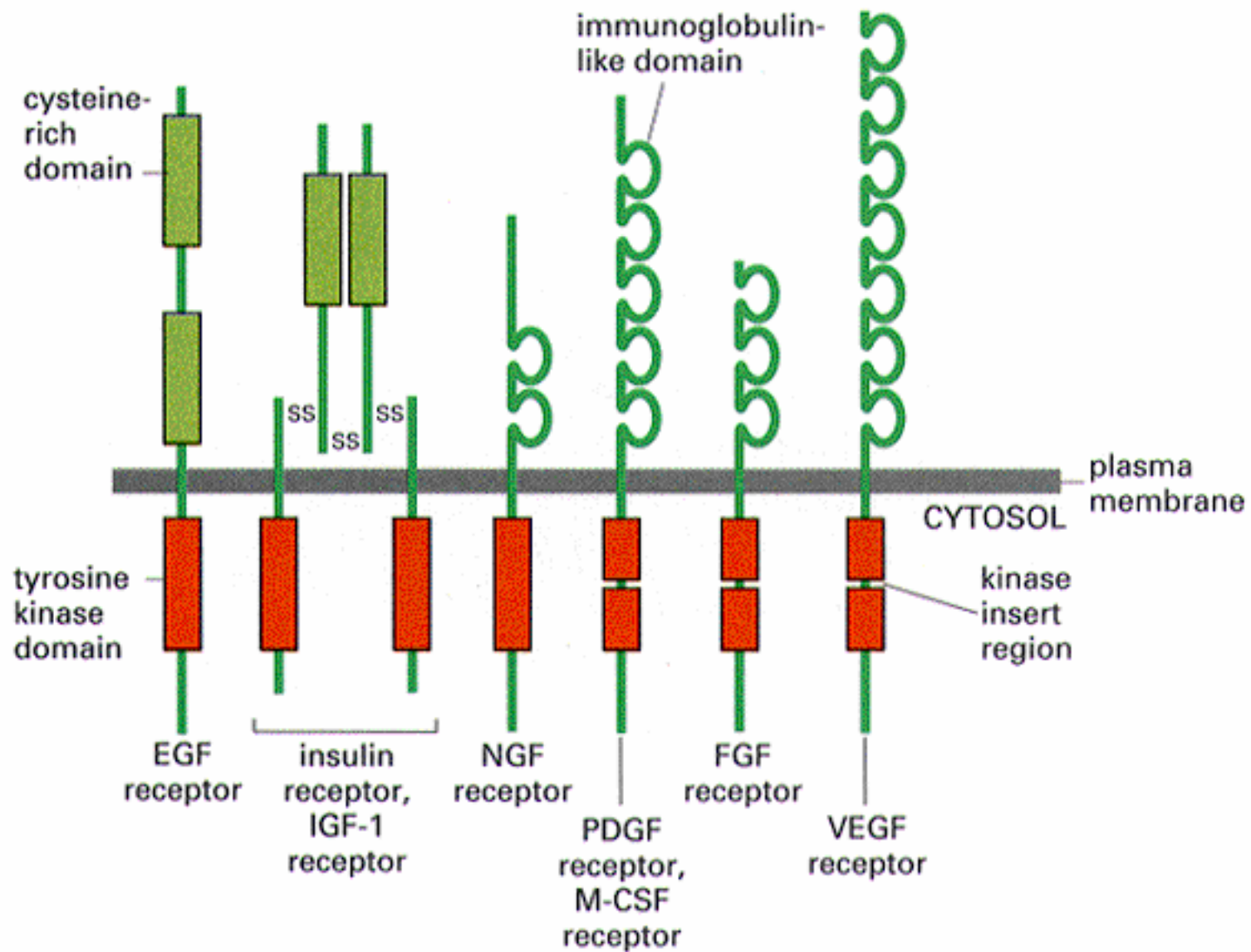


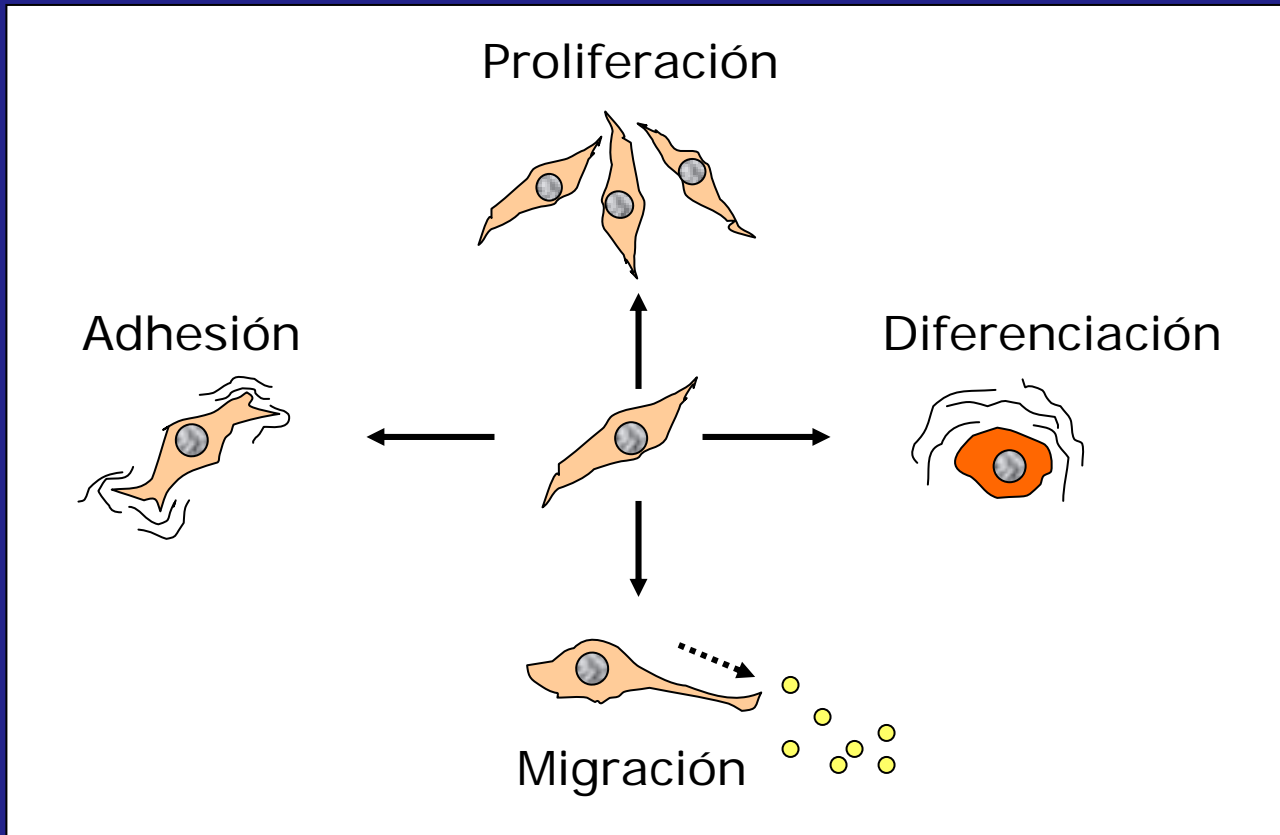
Señalización Celular

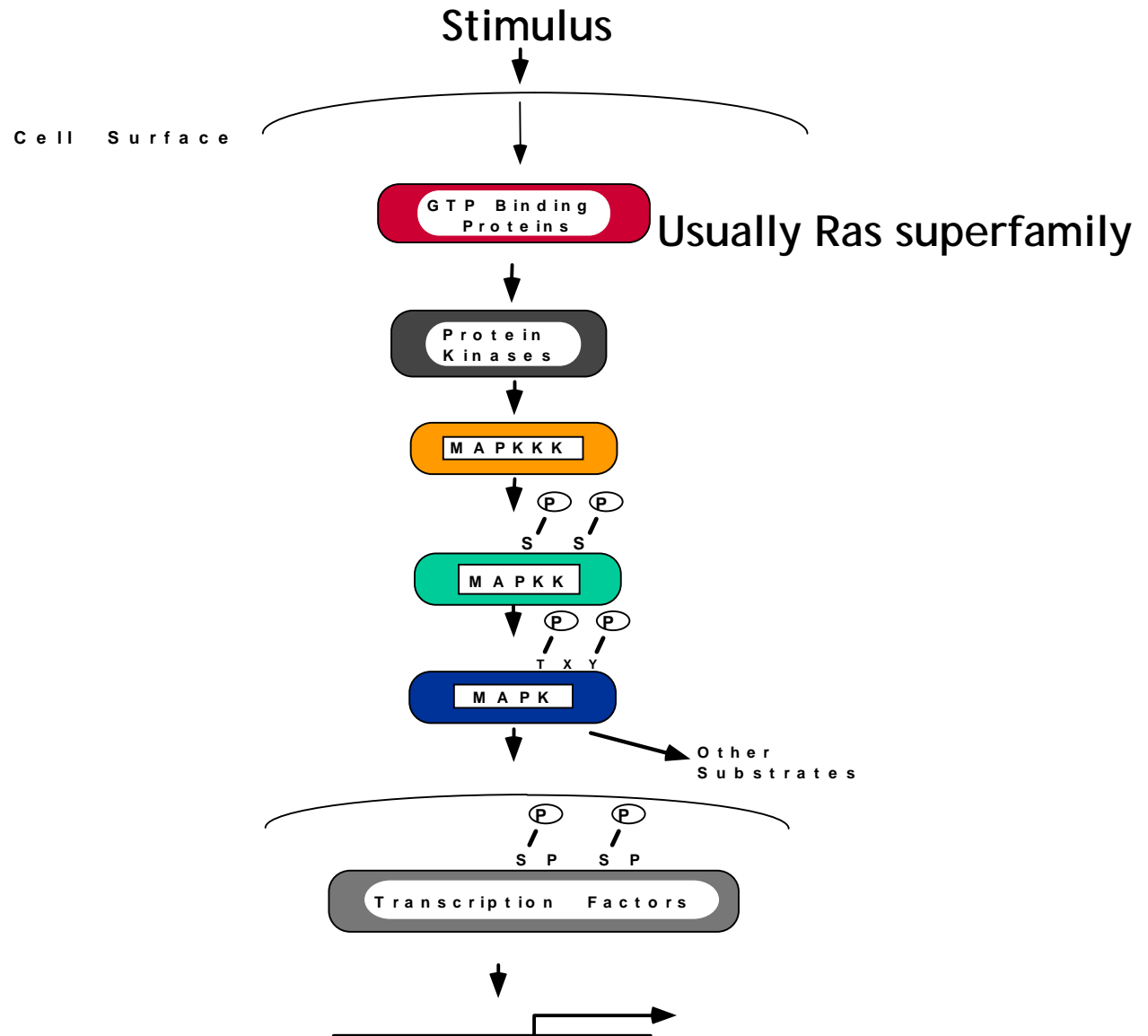
MAPQuinasas

Patricio Smith F.

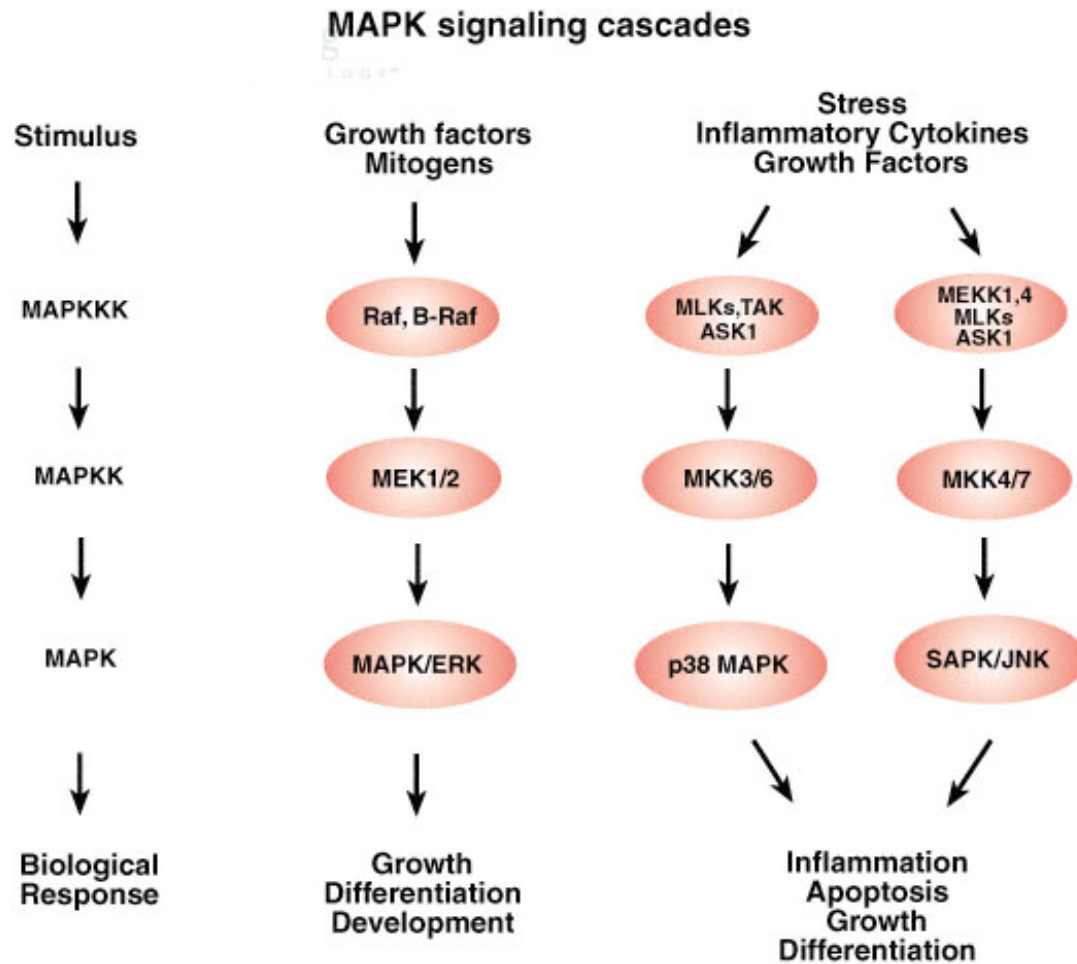


Actividades Moduladas por Factores de Crecimiento

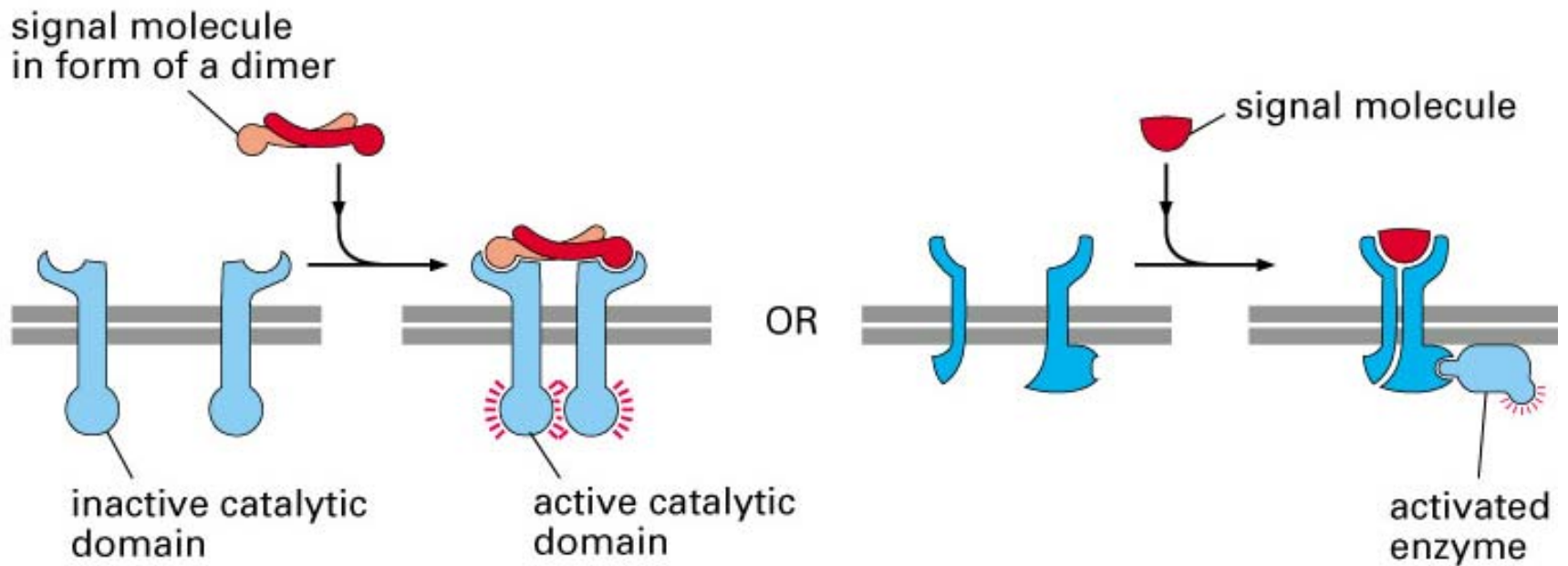




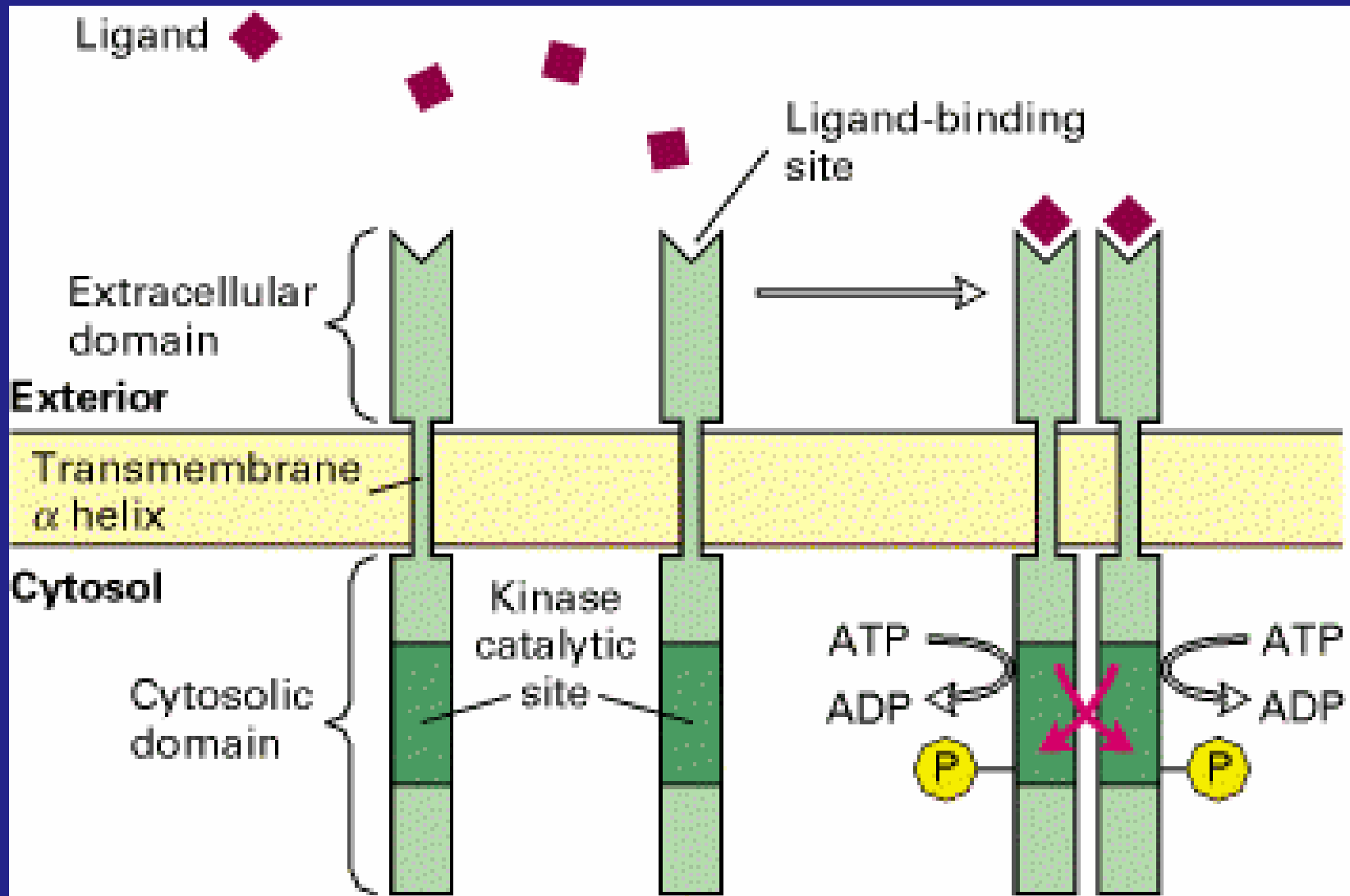
Proteína Quinasas Activadas por Mitógenos



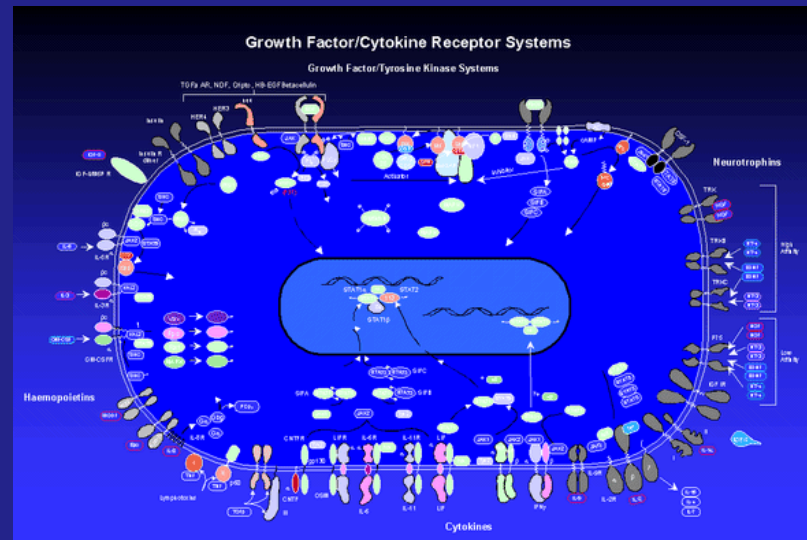
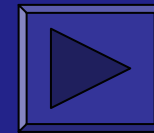
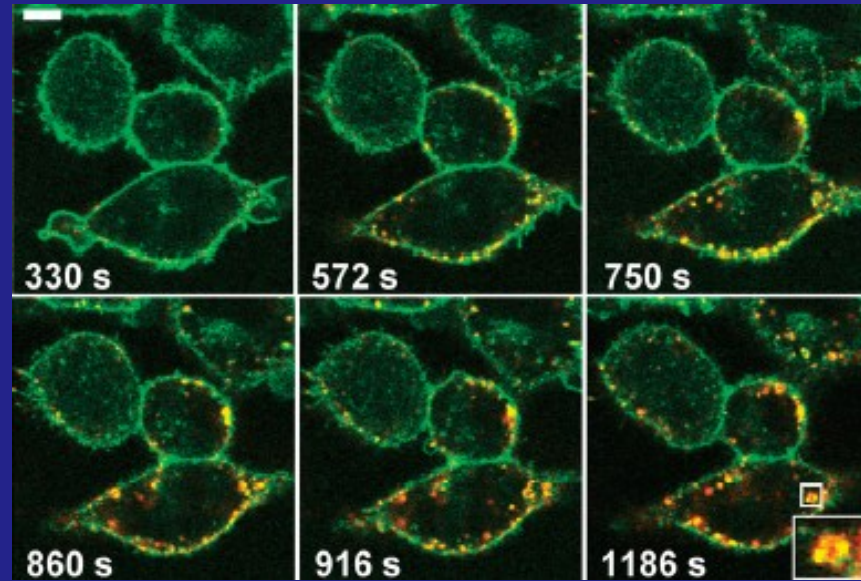
Receptores con actividad enzimática



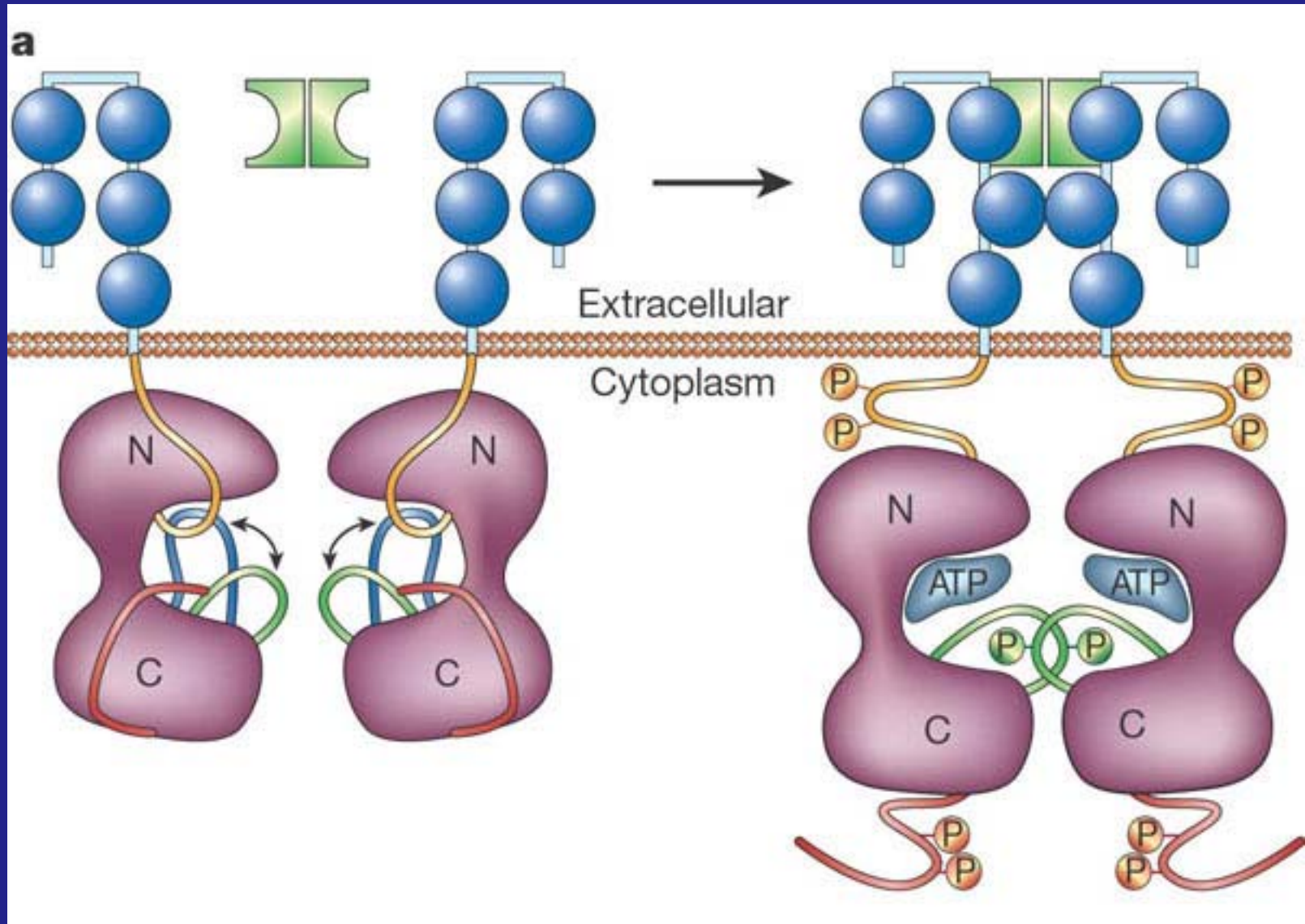
Tirosina quinasa receptora.



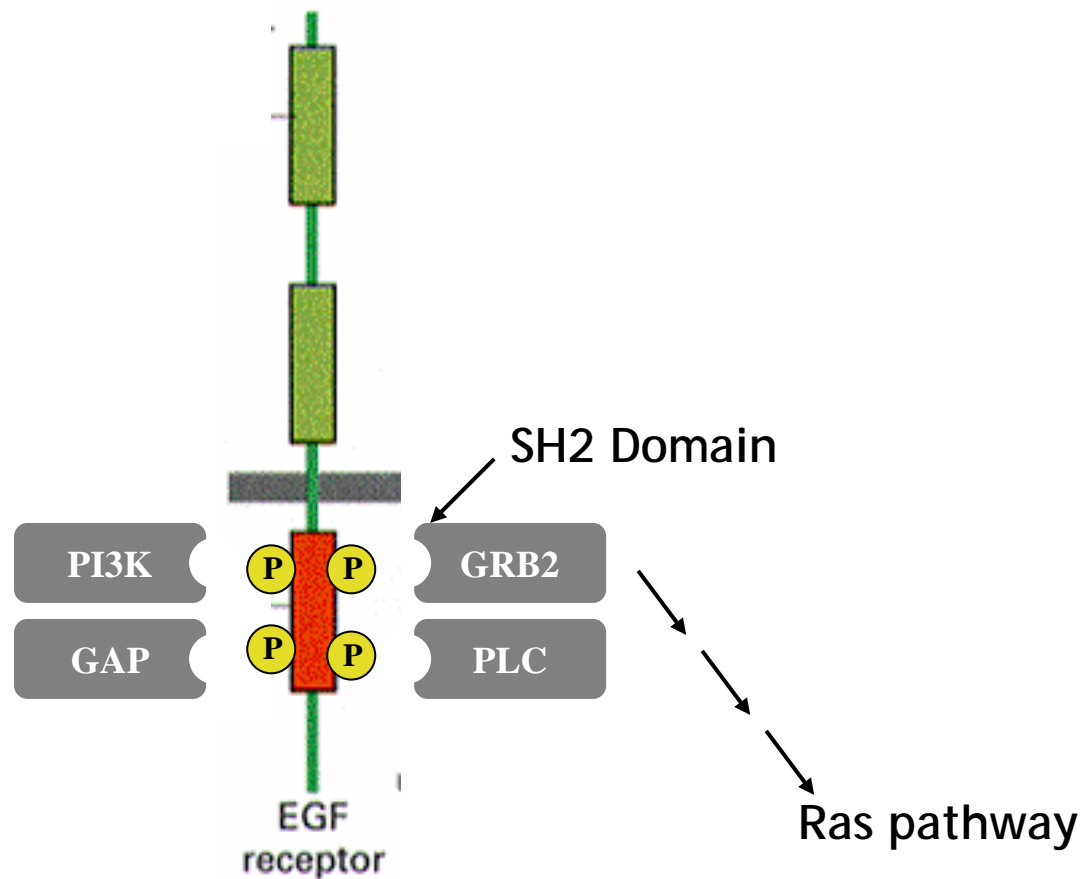
Respuesta Celular a Factores de Crecimiento



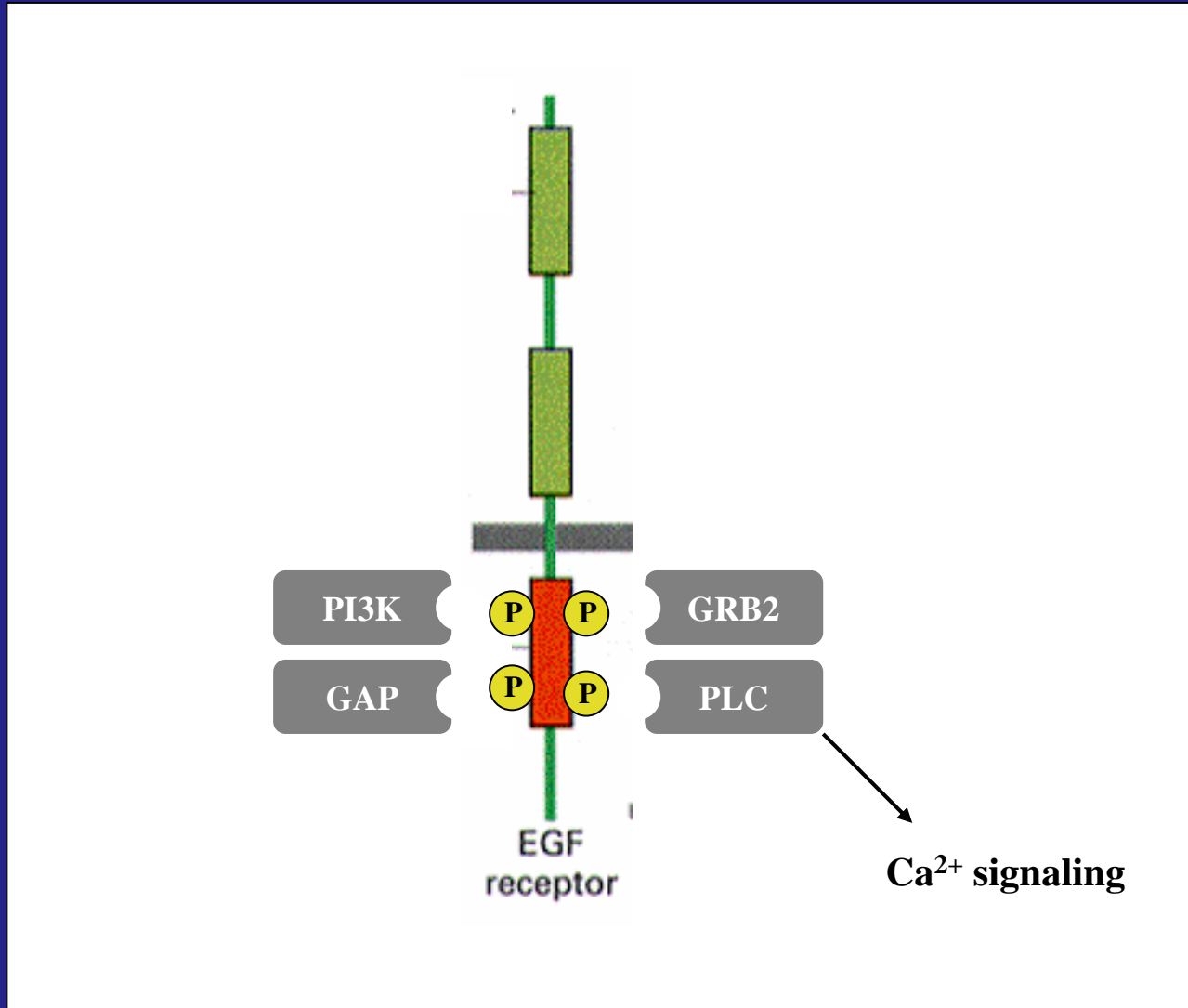
Activación de Receptores Tirosina Quinasa



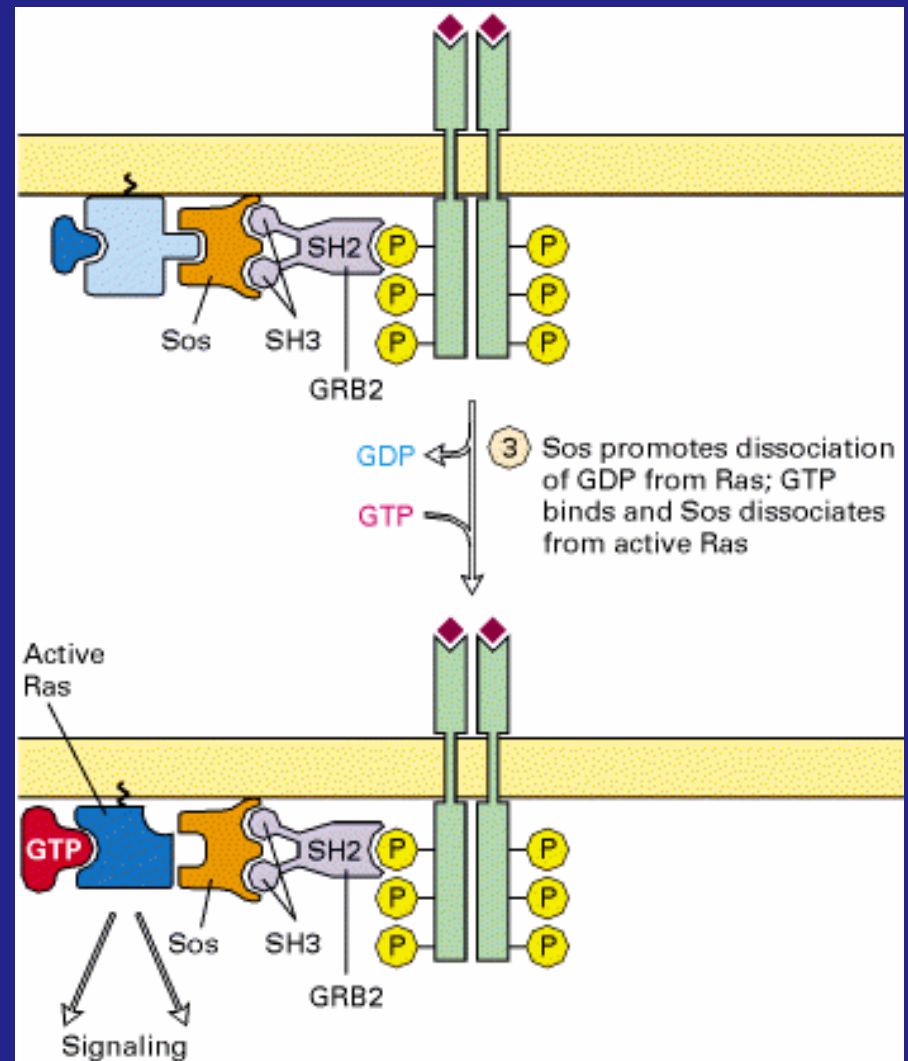
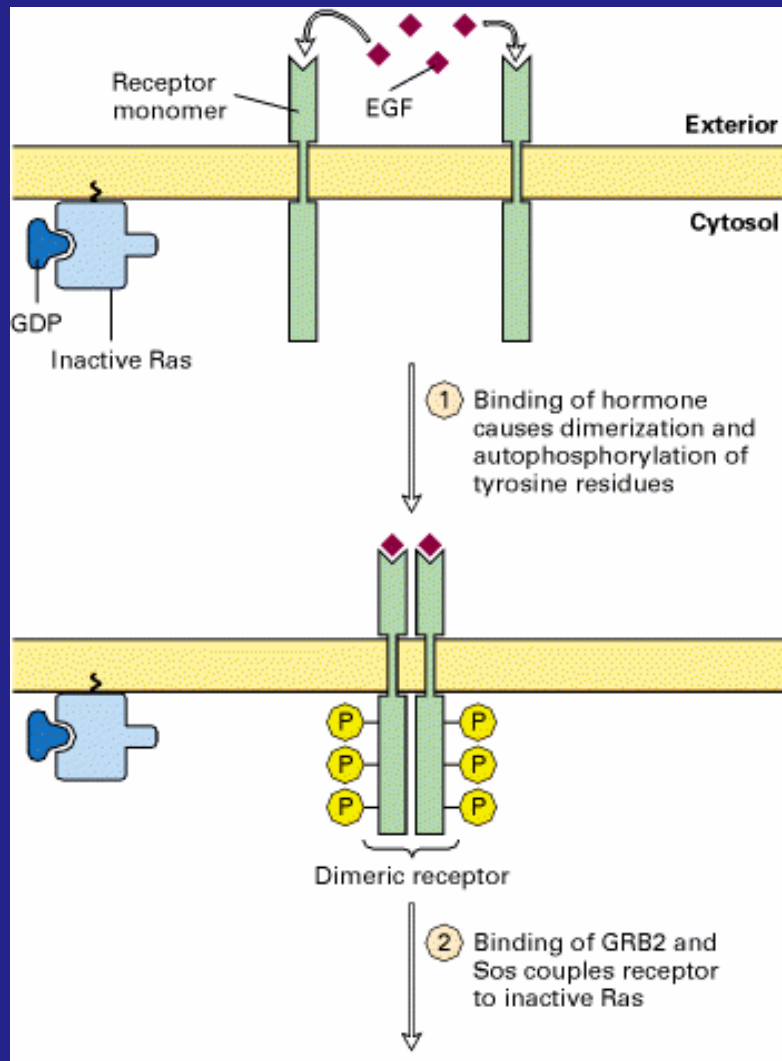
P-Tyr se une a reguladores rio abajo a través de dominios SH2



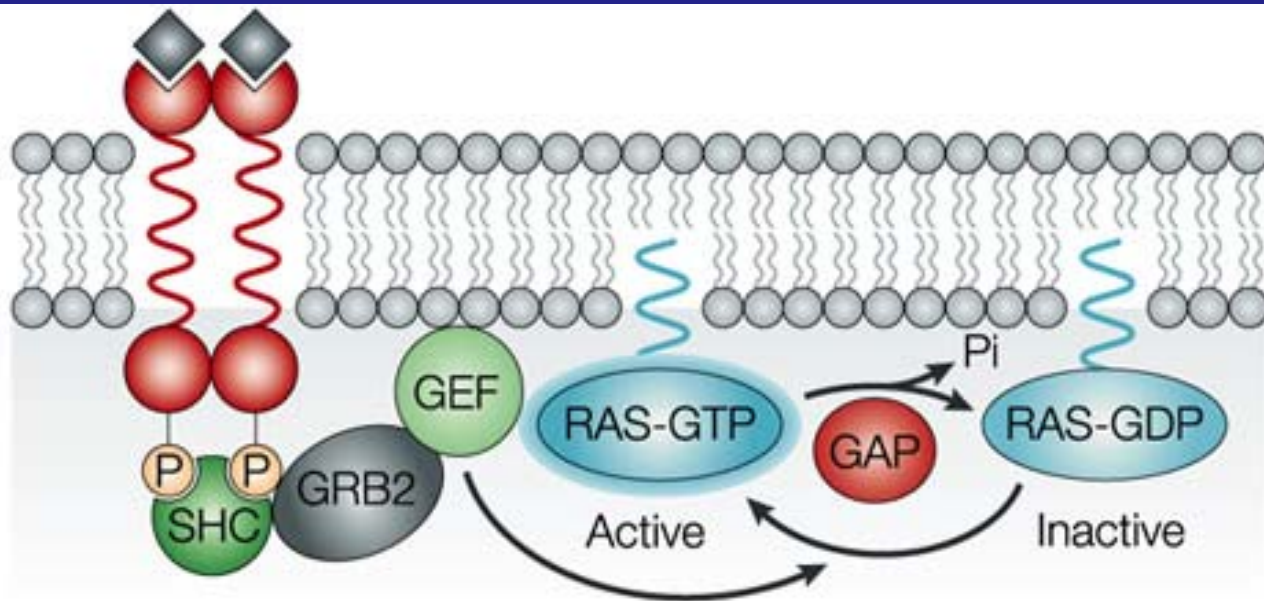
Señalización celular por Ca^{2+} puede ser activada por RTKs via PLC γ



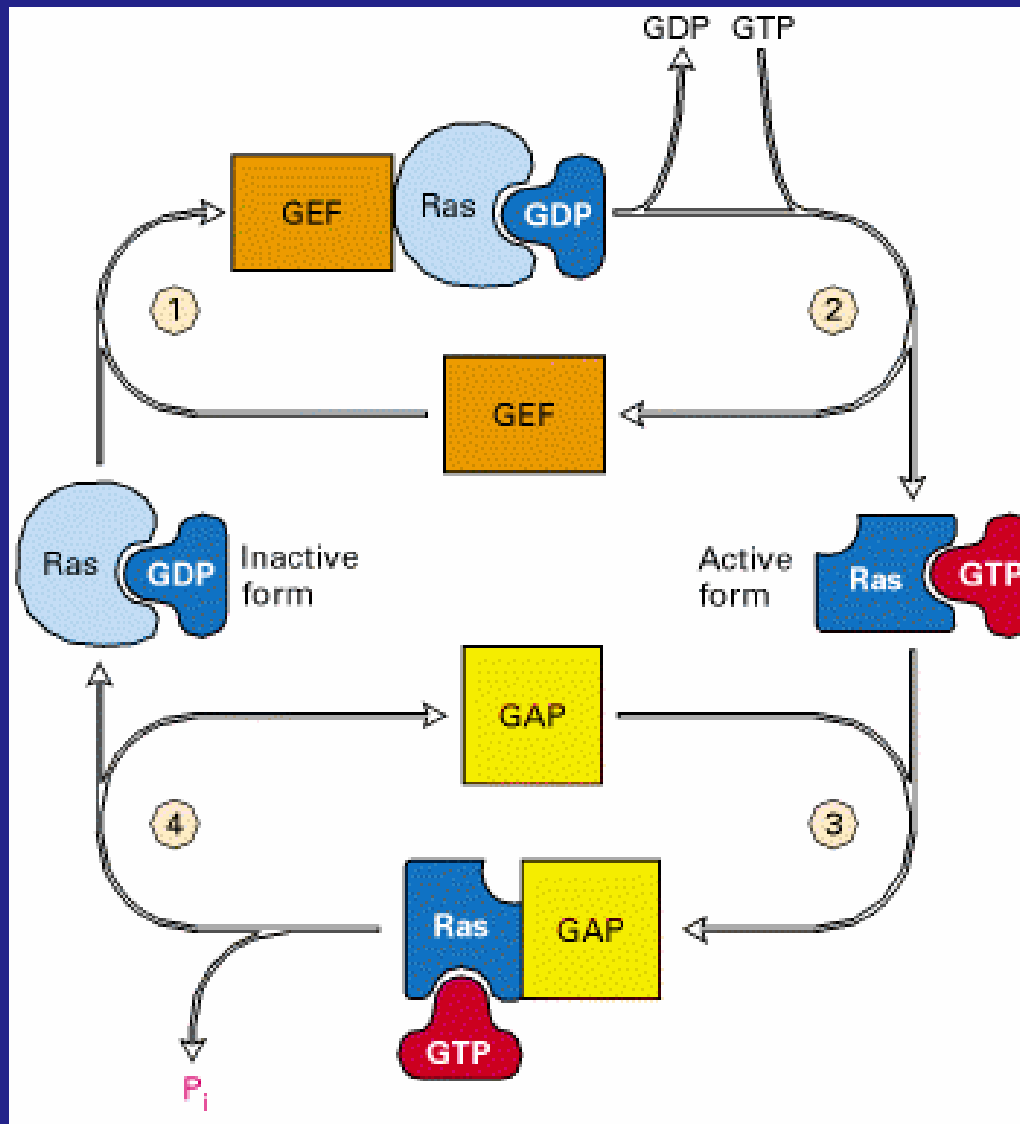
Señalización por MAPQuinasas

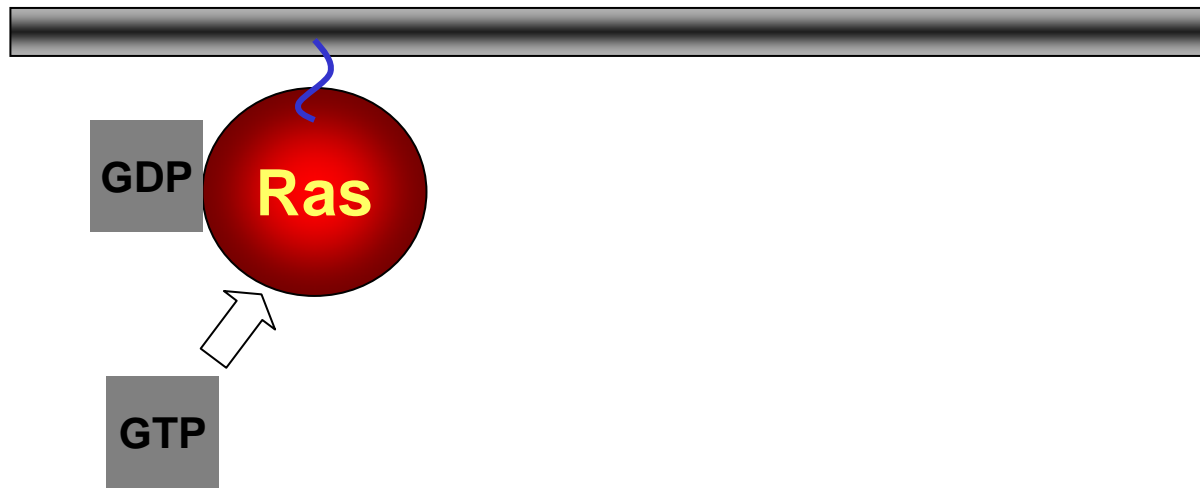


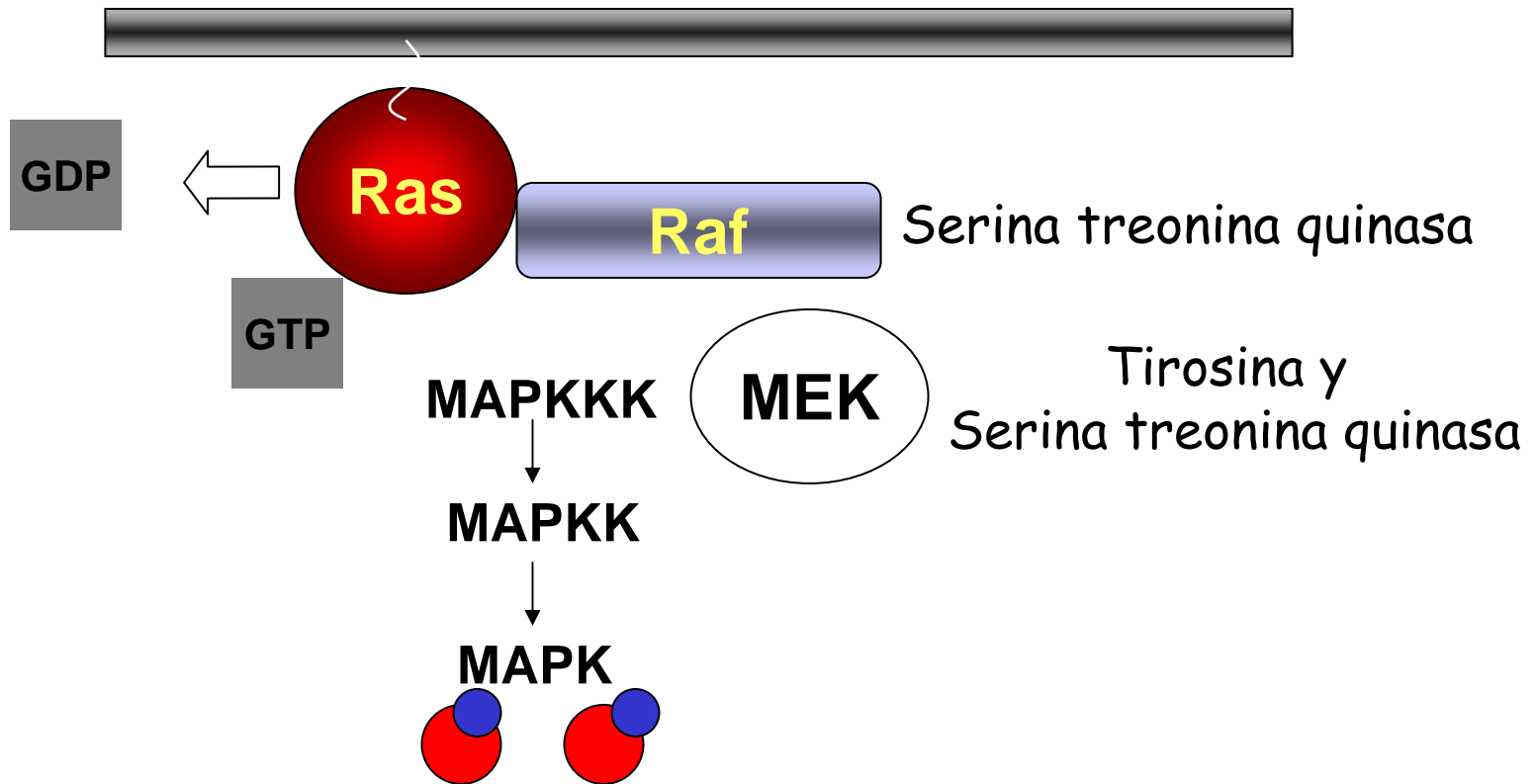
Mecanismos de activación de Ras

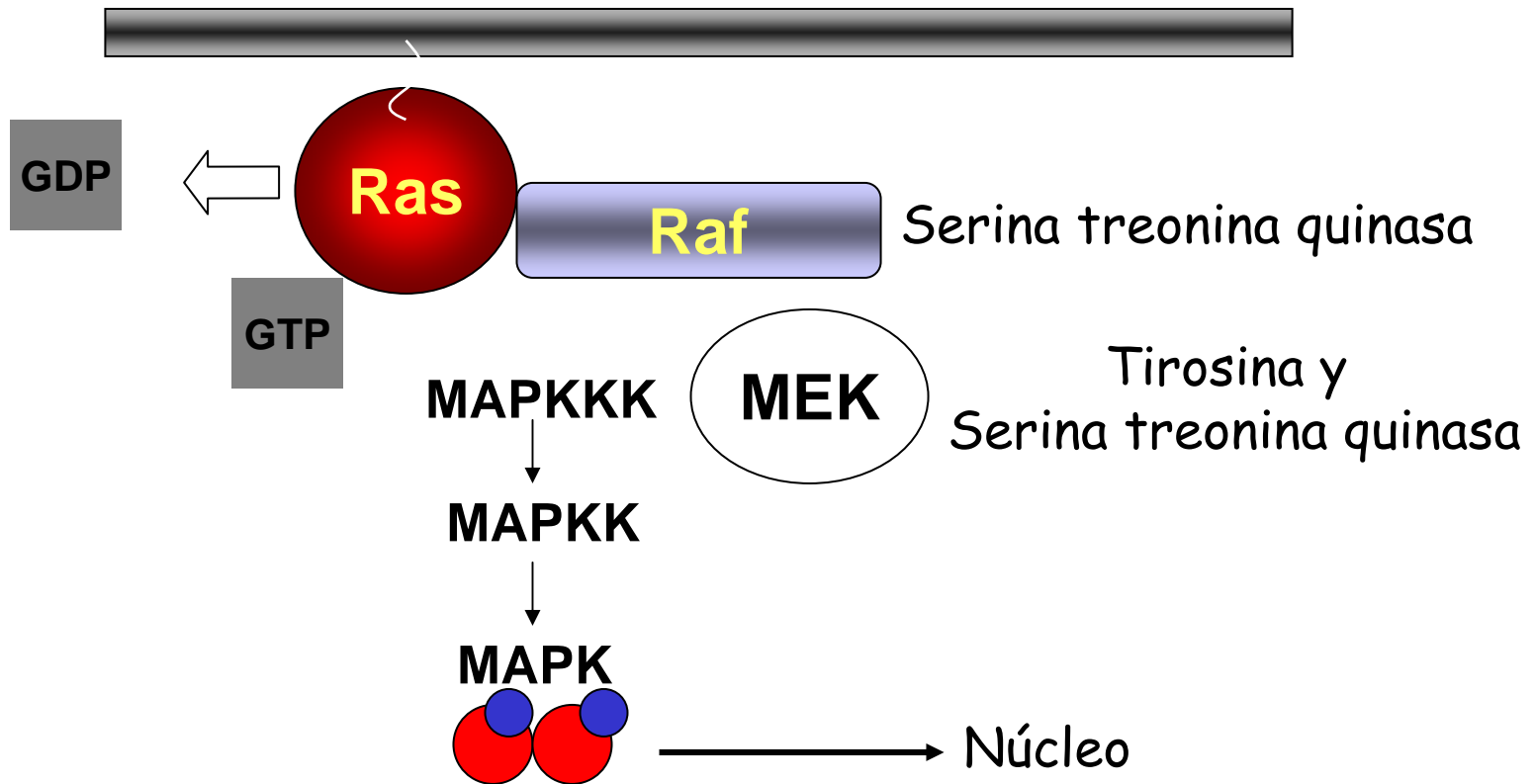


Activación de Ras

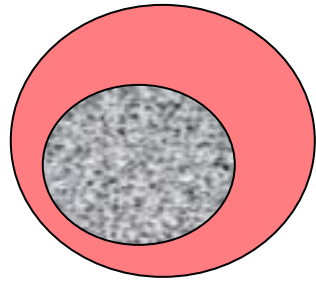
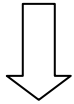




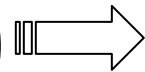




Factor de Crecimiento
Ej PDGF, EGF

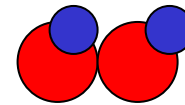


Célula en G₀

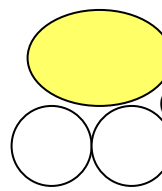


Genes de
Respuesta
Temprana

C-fos



MAPQuinasas



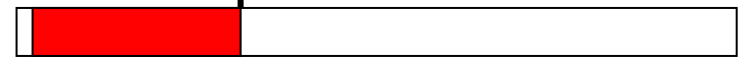
Factor del
complejo ternario

Factor de Respuesta
al suero

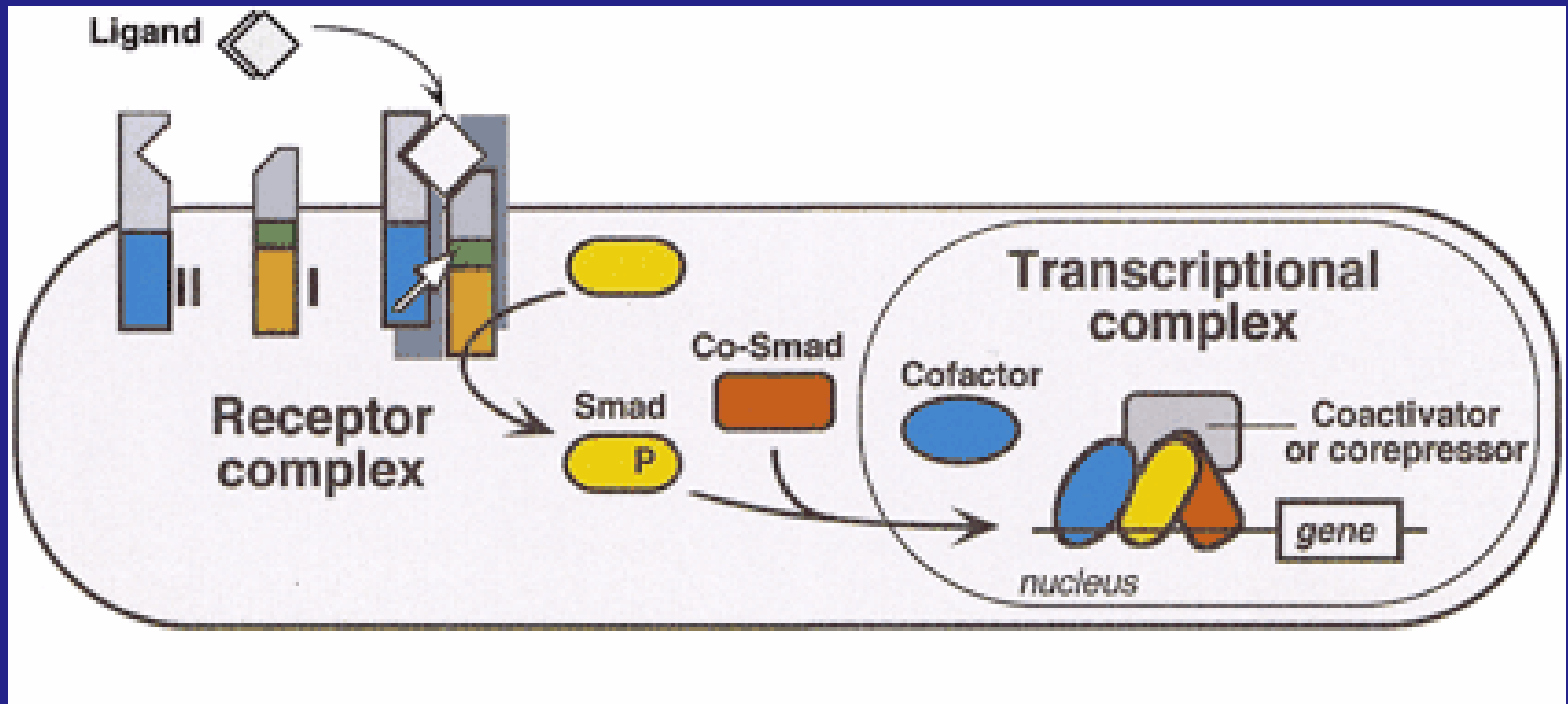


Elementos de
respuesta al
suero

C-fos



Receptor TGF- β serina treonina quinasa



Funciones en desarrollo embrionario,
reparación tisular, cáncer.

[illegible]

Src or Fyn

Src or Fyn

Kinase

Crk

Crk

JNK

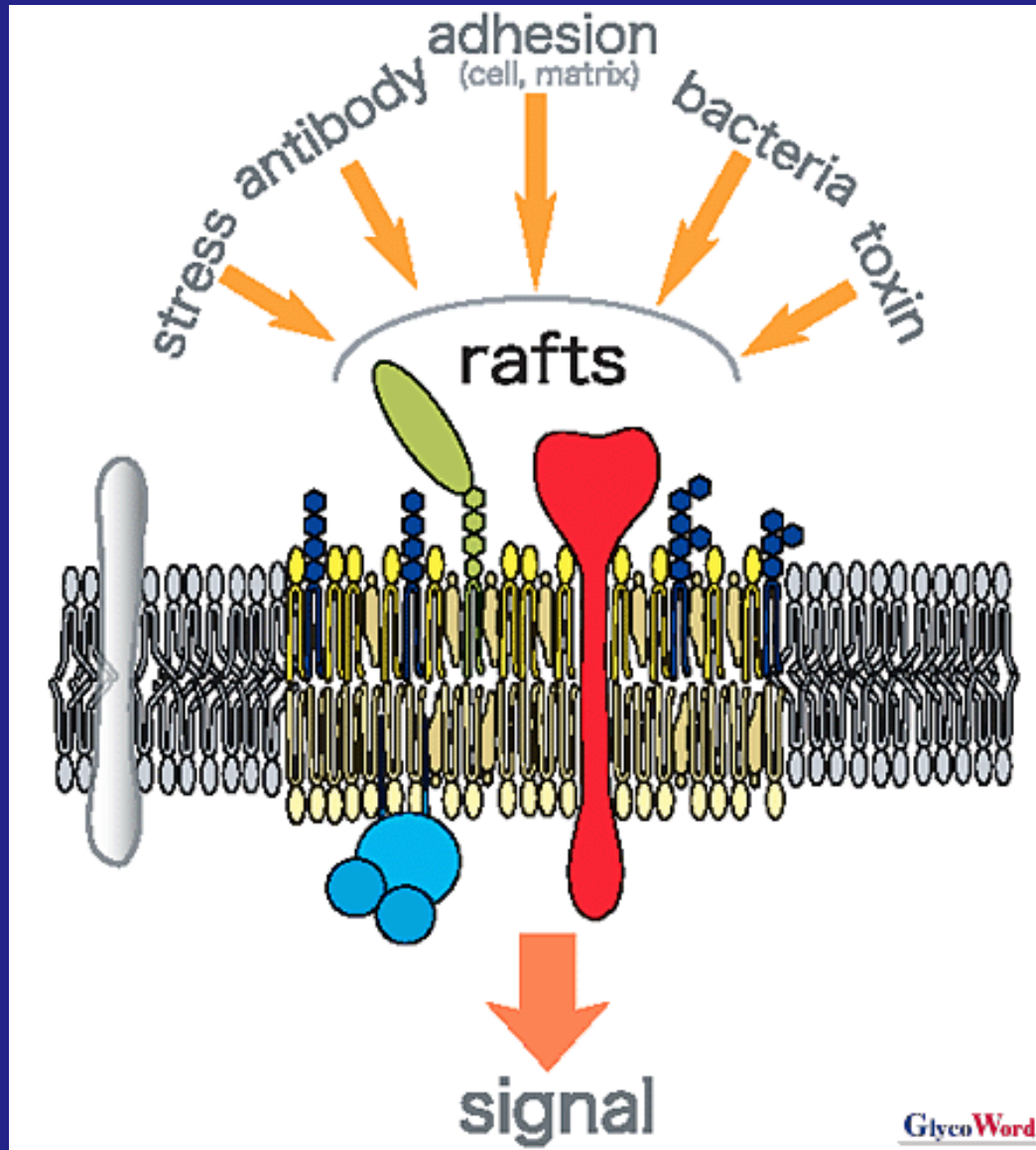
RAS

ERK

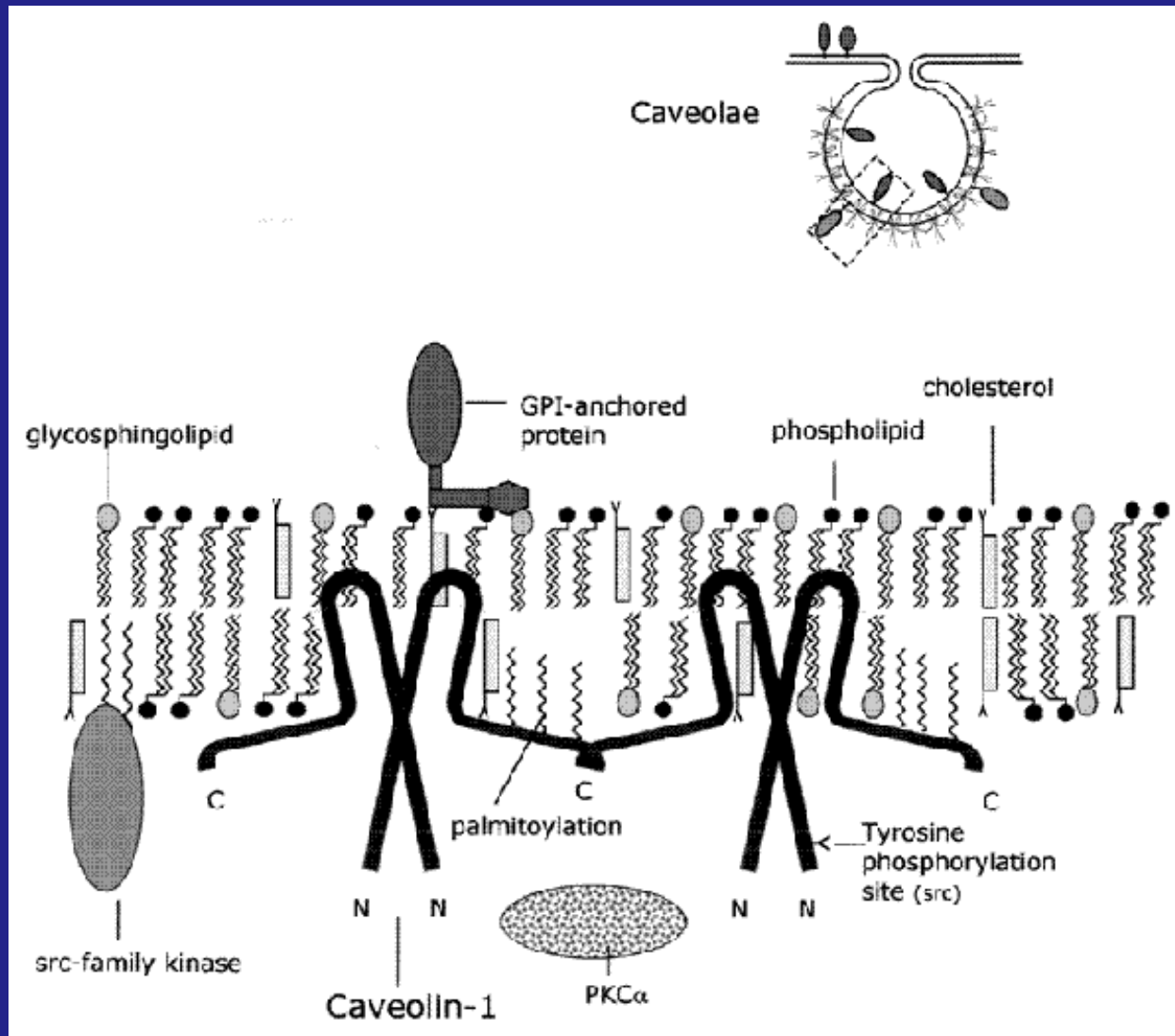
RAS

ERK

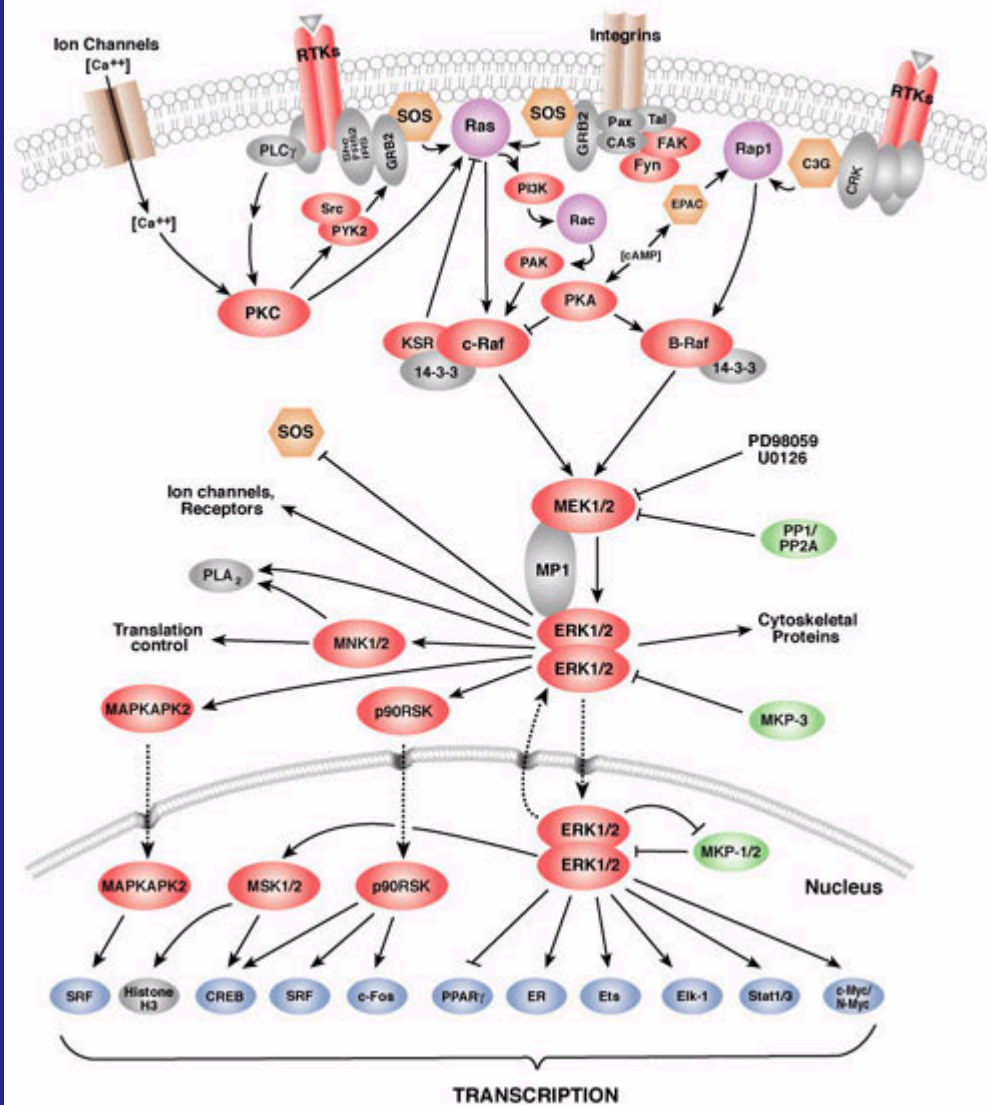
Balsas lipídicas o RAFTS



Caveolas

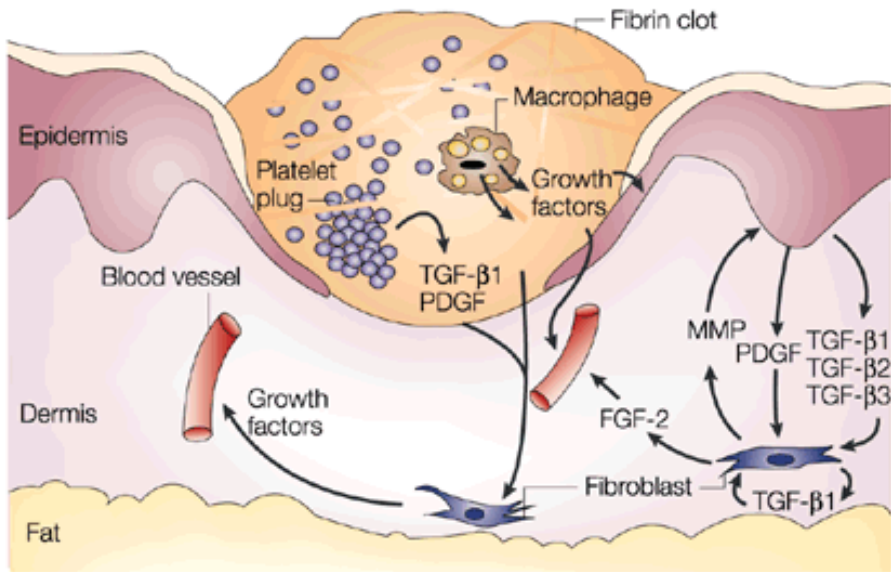


MAPK/ERK in Growth and Differentiation

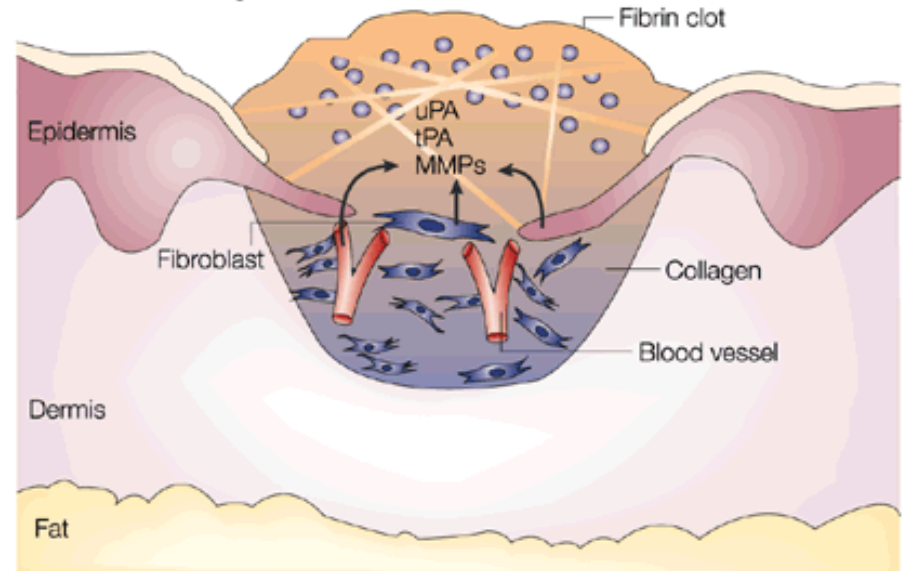


Reparación y señalización celular

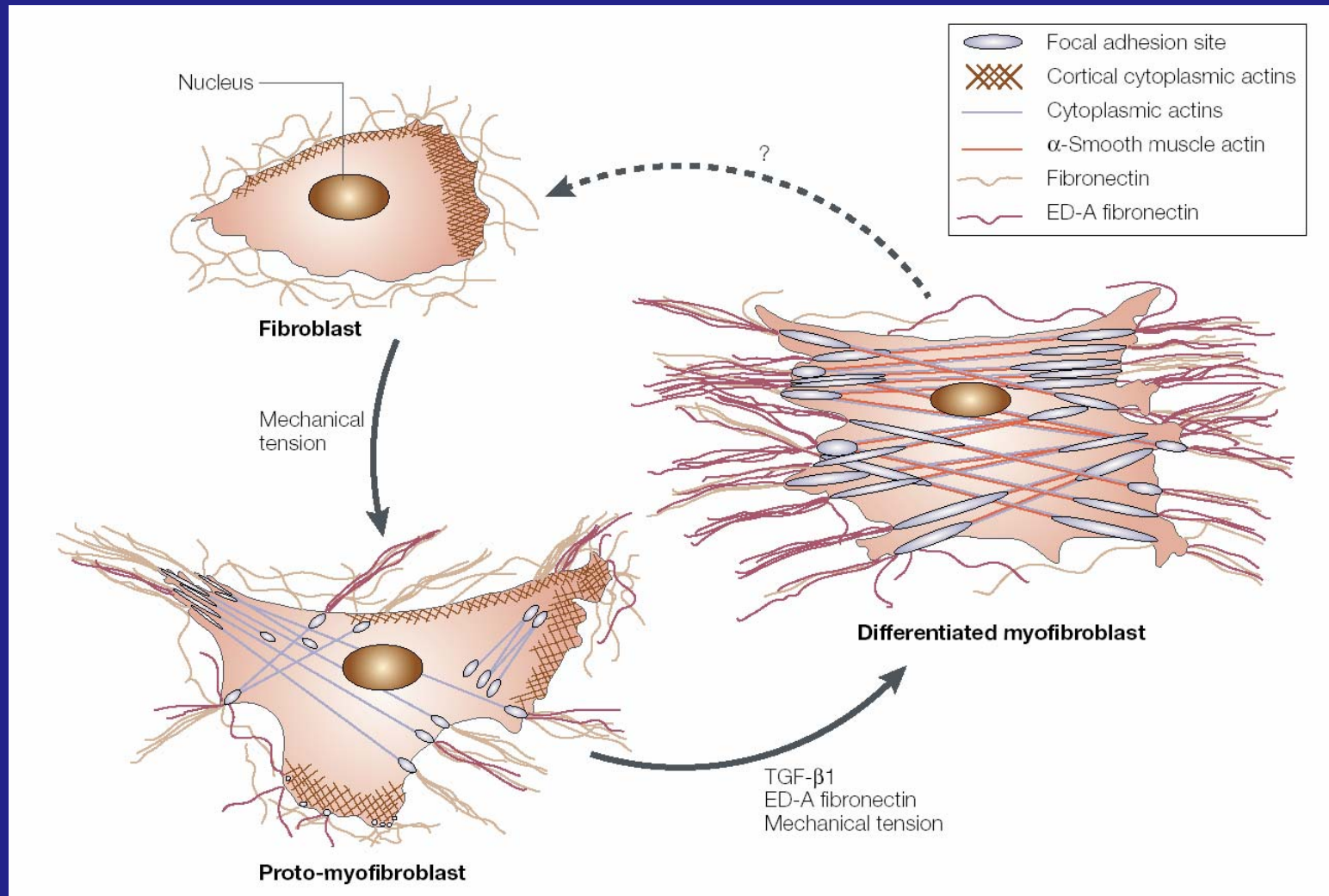
a Wound healing



b Wound healing



Modulación del fenotipo miofibroblástico



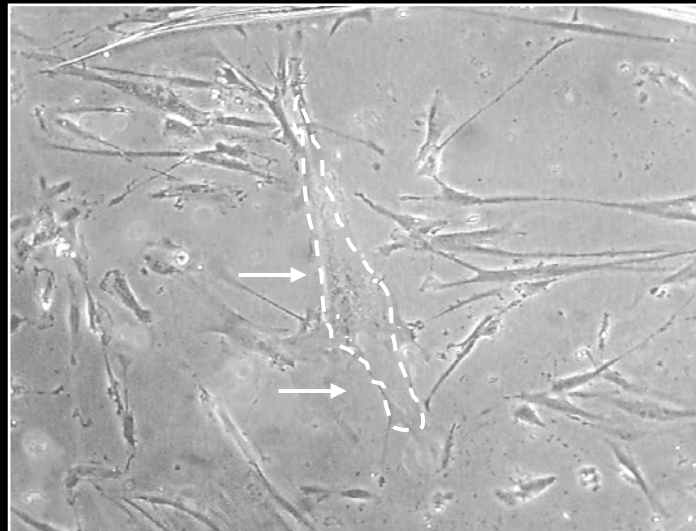
Tomasek y col. *Nature Mol Cell Biol* 2002; 3: 349-363.

Cultivo
primario

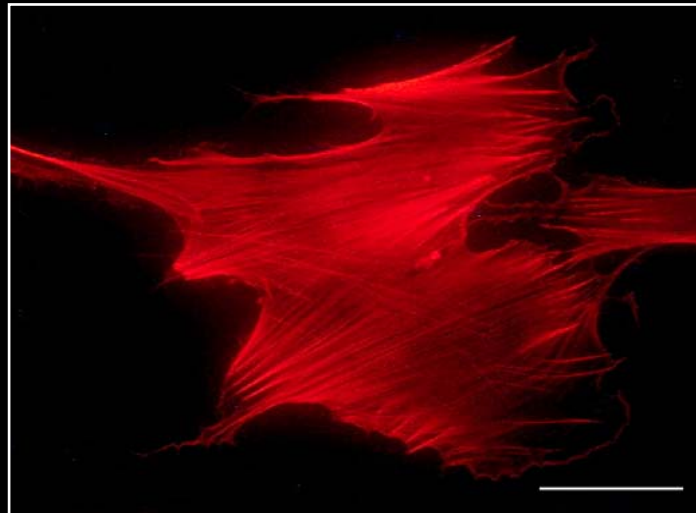
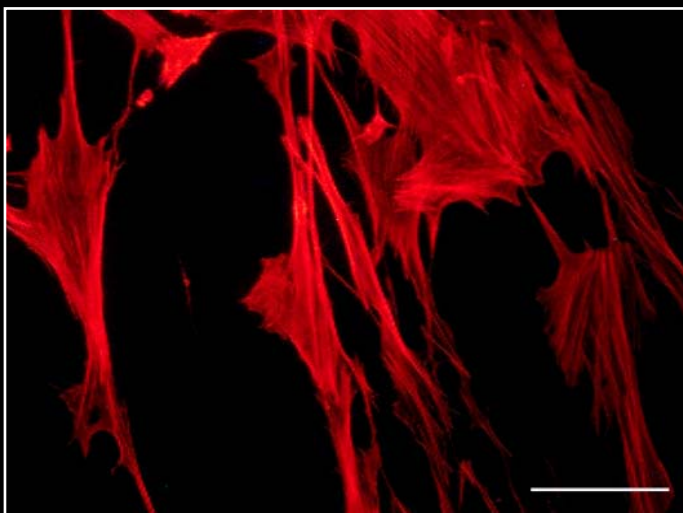
Tejido Sano



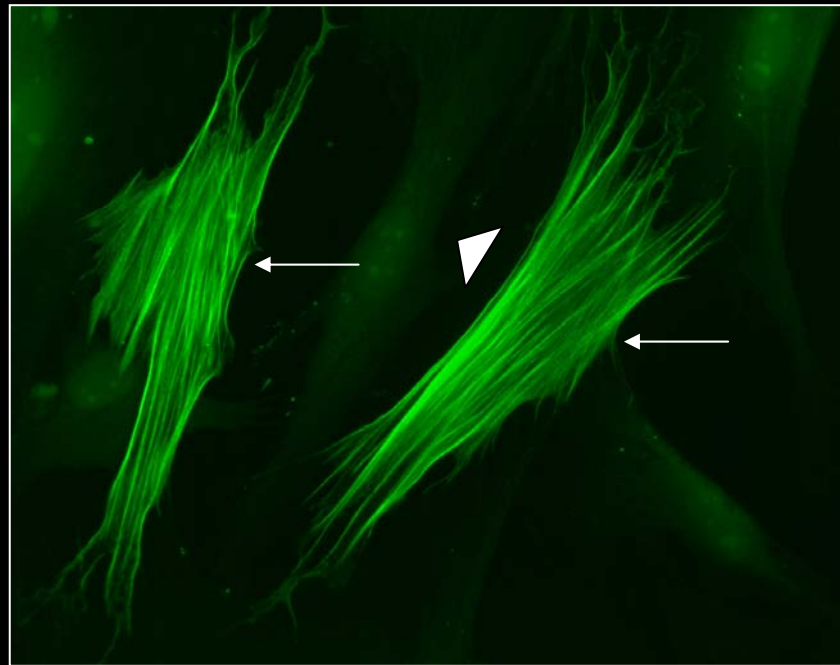
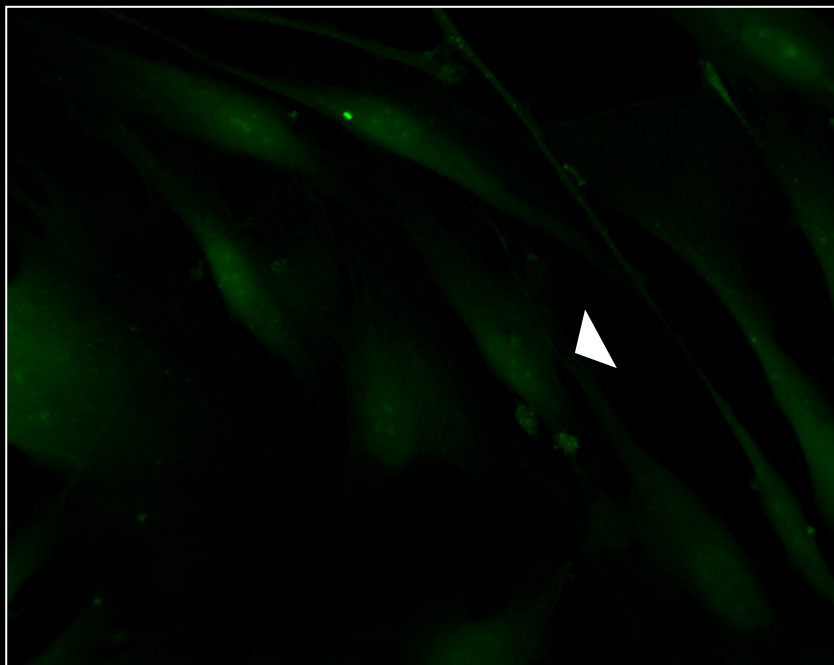
Tejido en Reparación



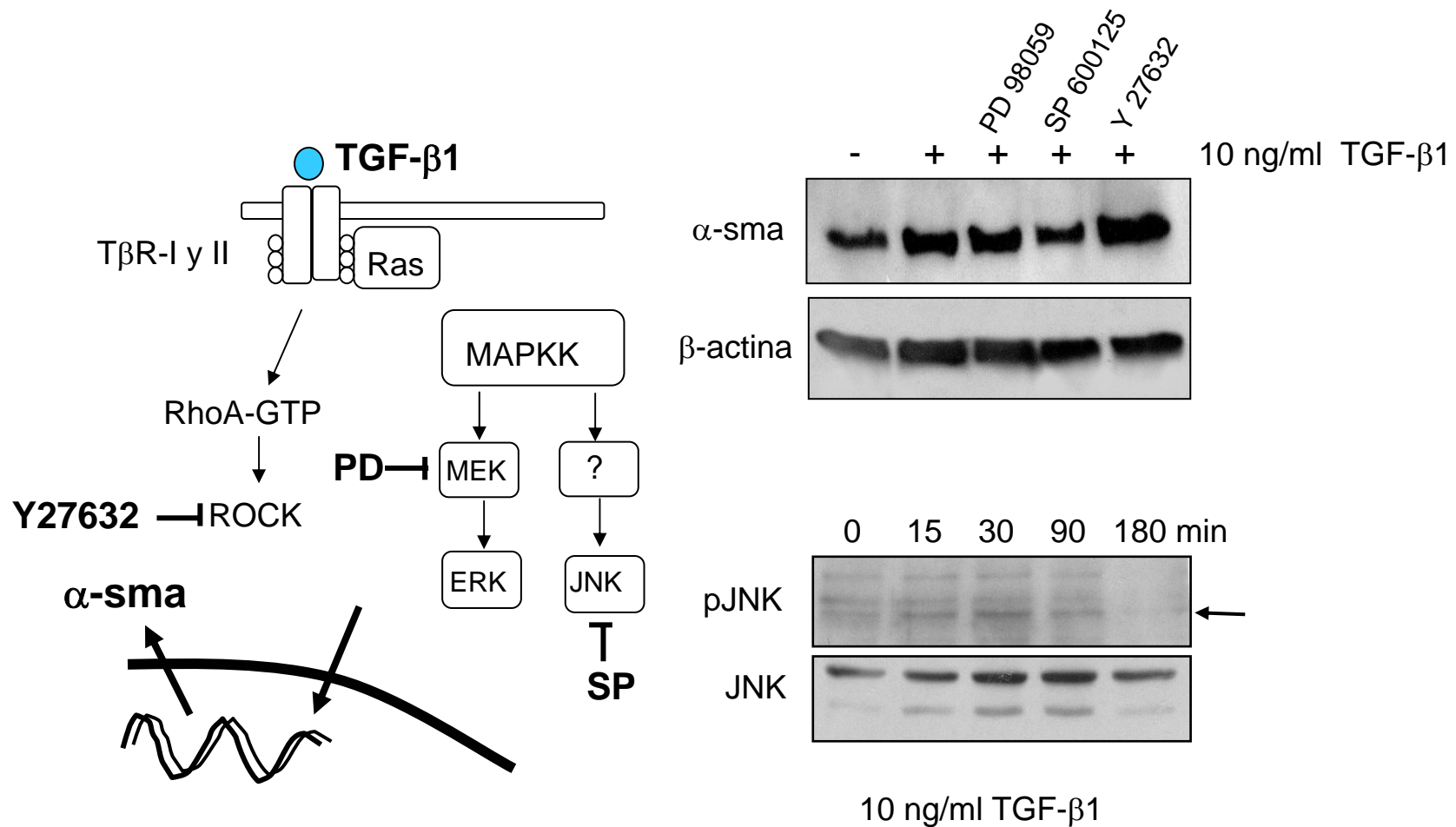
Actina



α -sma



Modulación del fenotipo miofibroblástico – expresión de α -sma.

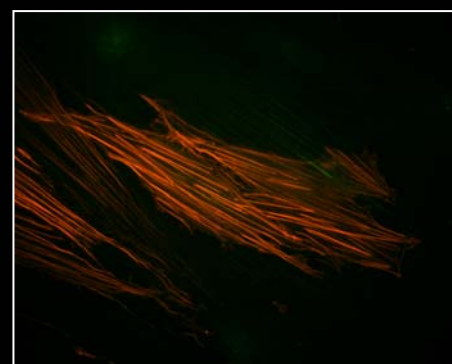
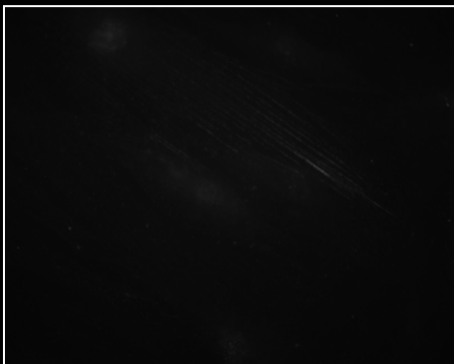
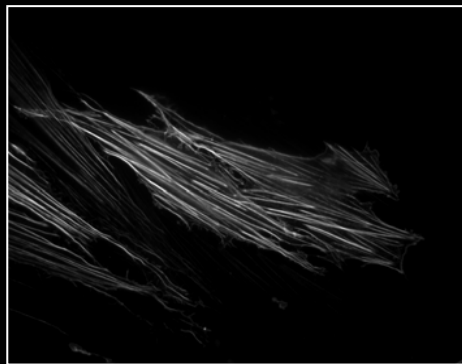


actina

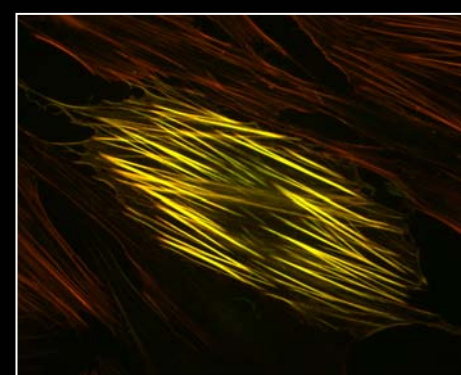
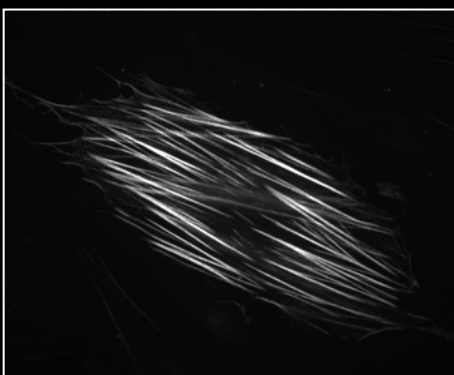
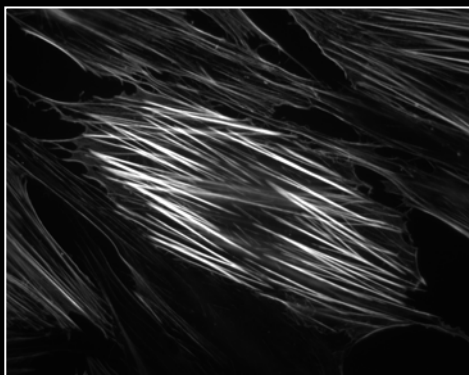
α -sma

co-localización

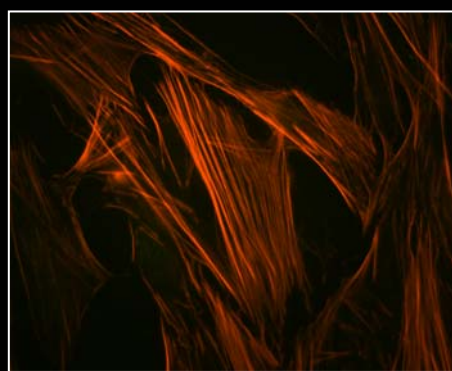
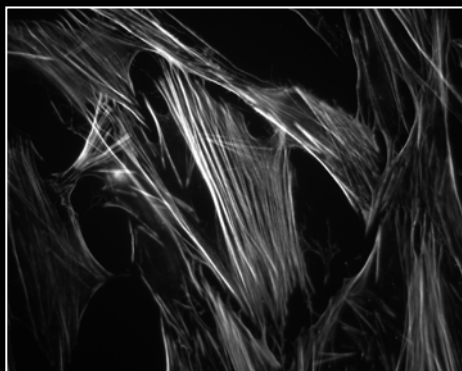
Control



10 ng/ml
TGF- β 1

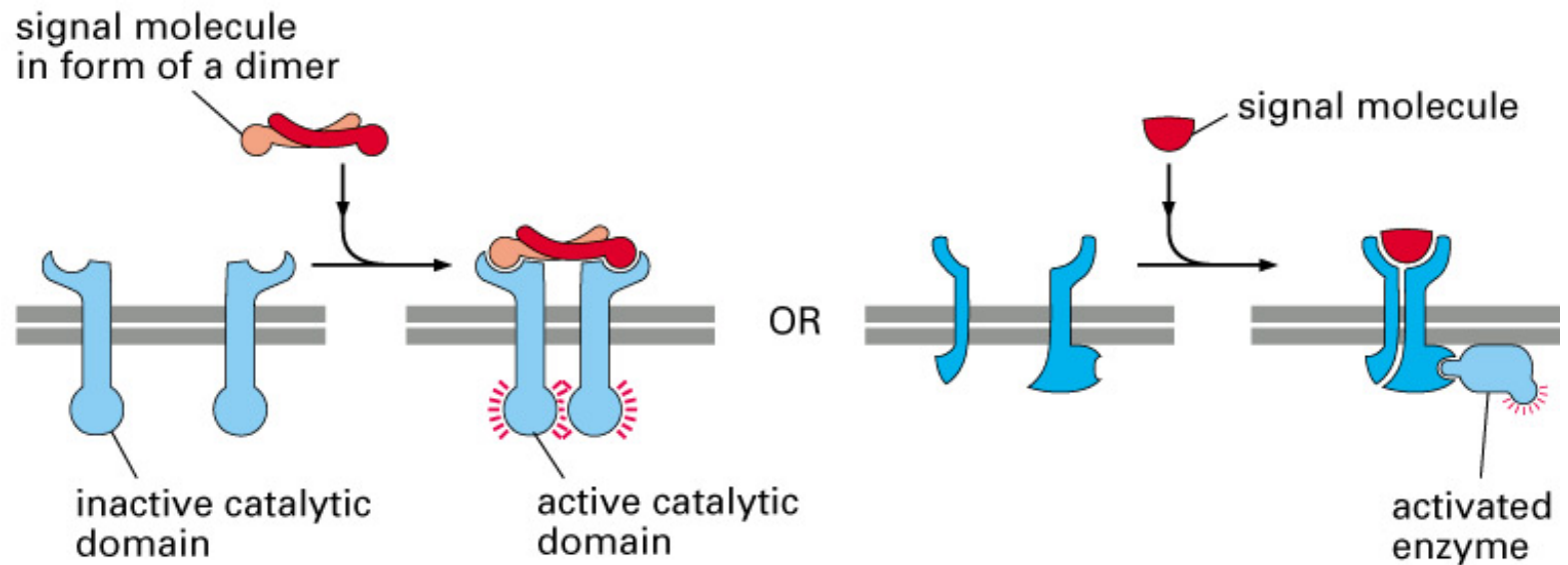


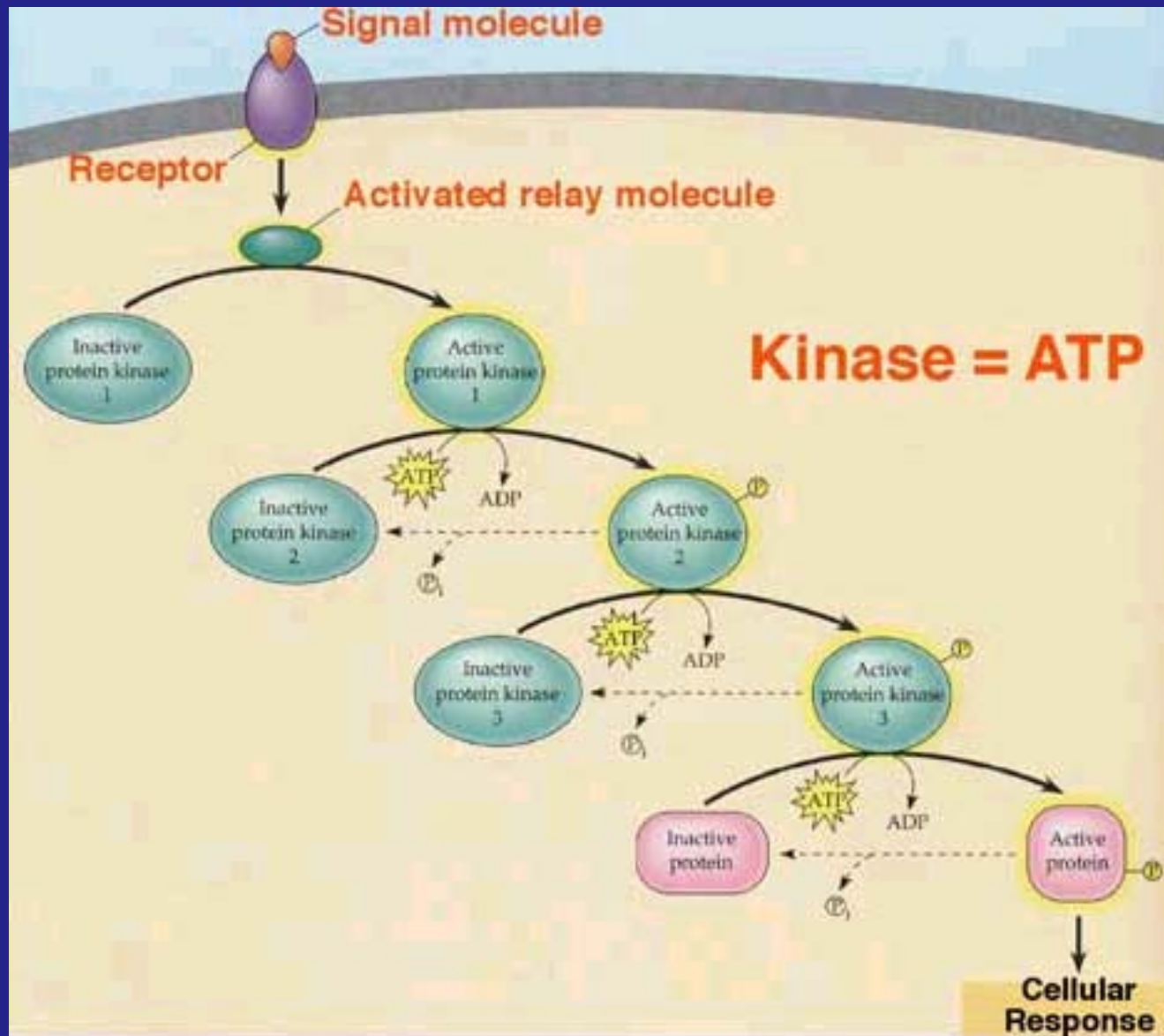
10 ng/ml
TGF- β 1
+
SP600125



Receptores con actividad enzimática

(C) ENZYME-LINKED RECEPTORS





Tirosina quinasa receptora.

