

Managing Design Data

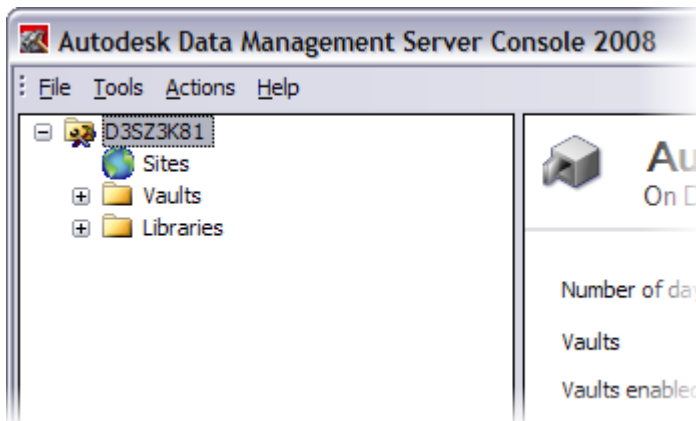
Setup Procedures

Course Setup Procedures

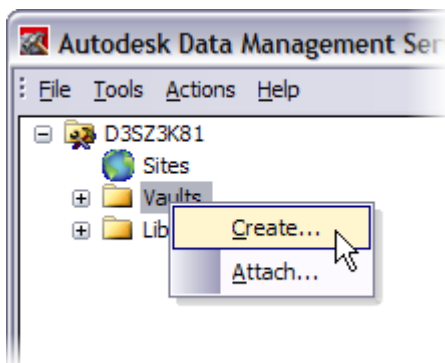
Approximate time to complete: 5 minutes

This procedure is provided to ensure that the computers being used in the training lab are properly set up. If the computers are not set up using the following procedure, then the Autodesk Vault exercise in Module 3 of the Electronic Student Workbook will not work properly.

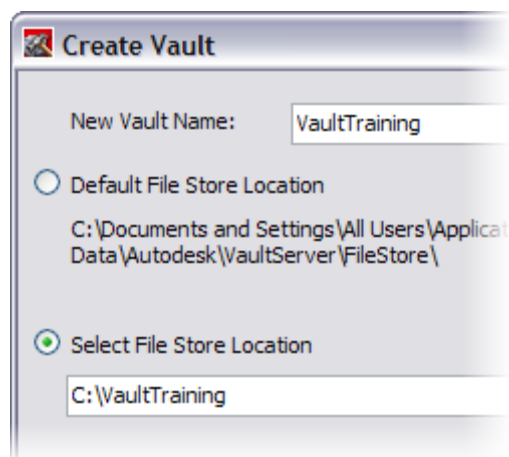
1. Start Autodesk Data Management Server Console.
 - Start>All Programs>Autodesk>Autodesk Data Management>ADMS Console 2008
2. In the Log In dialog box, enter **administrator** for User Name. Leave Password blank.
3. Click OK. Autodesk Data Management Server Console 2008 is displayed.



4. Right-click Vaults, and then select Create.

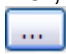


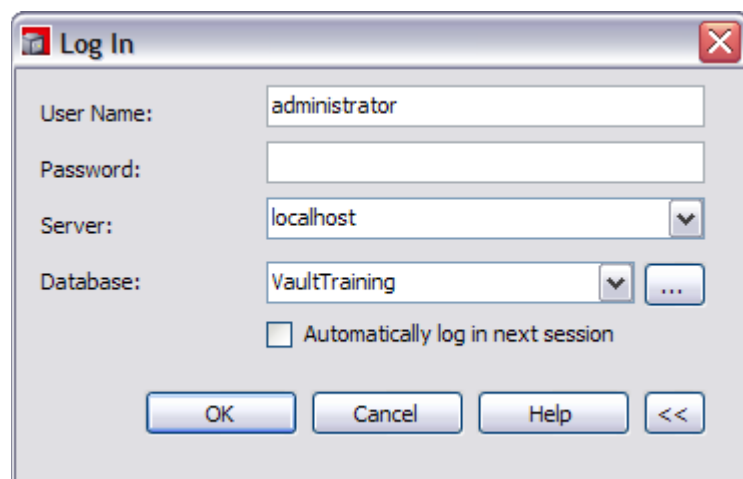
5. In the Create Vault dialog box, enter the following information:
 - In New Vault Name, enter **VaultTraining**.
 - Click Select File Store Location.
 - Enter **C:\VaultTraining**.
 - Click OK.



6. Click OK.
7. Click OK to close the message box. The new vault is displayed.
8. Exit Autodesk Data Management Server Console 2008.

Add a User

1. Start Autodesk Vault Explorer 2008.
 - Start>All Programs>Autodesk>Autodesk Data Management>Autodesk Vault Explorer 2008.
2. In the Log In dialog box, enter **administrator** for User Name.
3. Leave Password blank.
4. In Server, the default server should be active.
5. Click 
6. In Databases, select VaultTraining, and then click OK.



7. Click OK.
8. Select Tools > Administration.
9. In the Administration dialog box, select the Security tab, and then click Users.
10. In the User Management dialog box, click New User.

11. In the New User dialog box, enter the following information:

- For First Name, enter **Vault**.
- For Last Name, enter **User**.
- For Login Name, enter **vaultuser**.
- For Password, enter **vault**.
- For Confirm Password, enter **vault**.
- Click Roles.
- In the Add Roles dialog box, select Vault Editor.

Click OK.

- Click Vaults.
- Select VaultTraining, and then click OK.
- Ensure that Enable User is checked.
- Click OK.

The screenshot shows the 'New User' dialog box. The title bar says 'New User'. Inside, there's a user icon and the name 'VaultUser'. The fields are filled as follows: First Name: Vault, Last Name: User, User Name: VaultUser, Email: (empty), Password: (masked with asterisks), Confirm Password: (masked with asterisks). Below the password fields are three buttons: Roles..., Vaults..., and Groups... To the right of these buttons are three dropdown menus: the first shows 'Vault Editor', the second shows 'VaultTraining', and the third is empty. Below these is a checkbox labeled 'Enable user' which is checked. At the bottom are three buttons: OK, Cancel, and Help.

- Click Close twice.

12. Exit Autodesk Vault Explorer 2008.