

Rocscience Product Installation Guide for Client-Server University Networks

For Use on an Individual Computer or Laptop

Introduction

The installation of the client-server version of Rocscience software on an individual computer or laptop for use in a course is a 2 step process.

1) Server Configuration

The first step is to define your computer as the server and install the server configuration software on it. Supported operating systems are Windows XP, Vista, Win7, Server2003, Server2008. The server configuration installs two components, the server configuration utility and the Rocscience license file. The server configuration utility is used to configure the Rocscience license file.

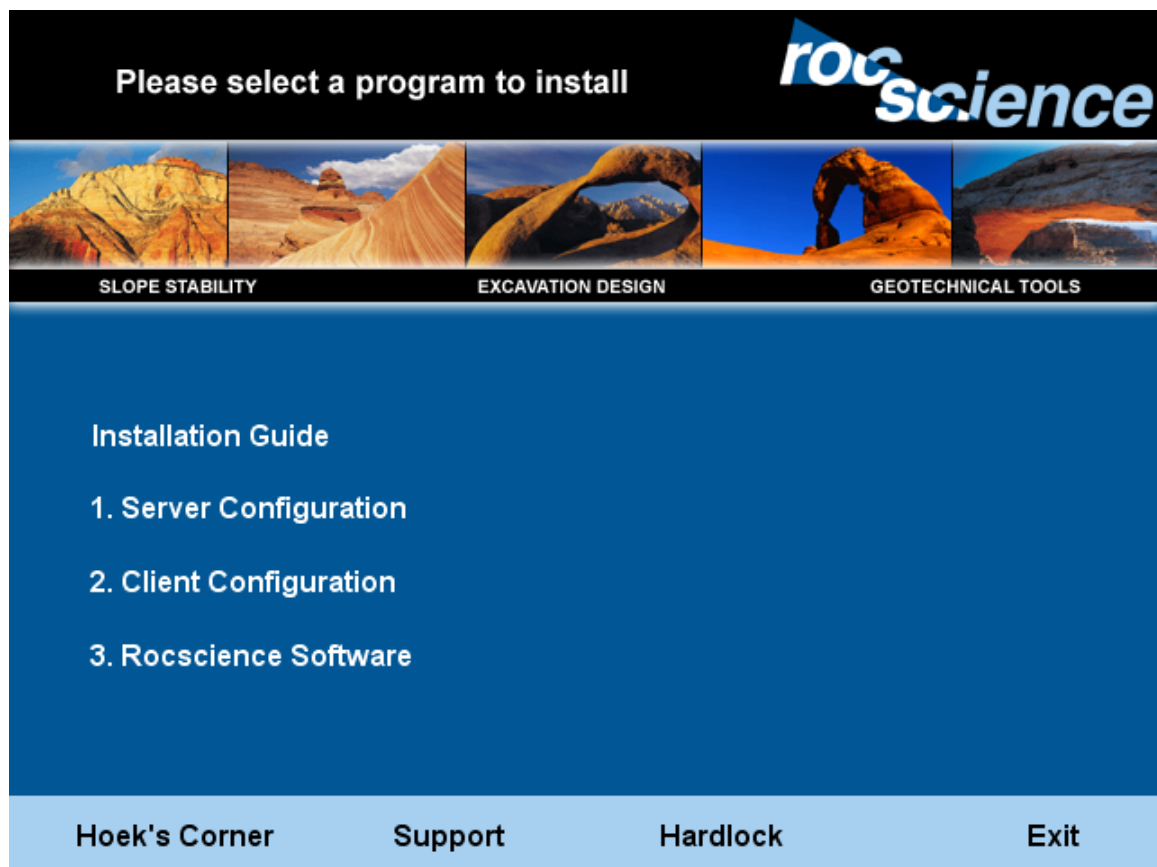
2) Rocscience Software

The second step is to install the Rocscience software you wish to use on your computer.

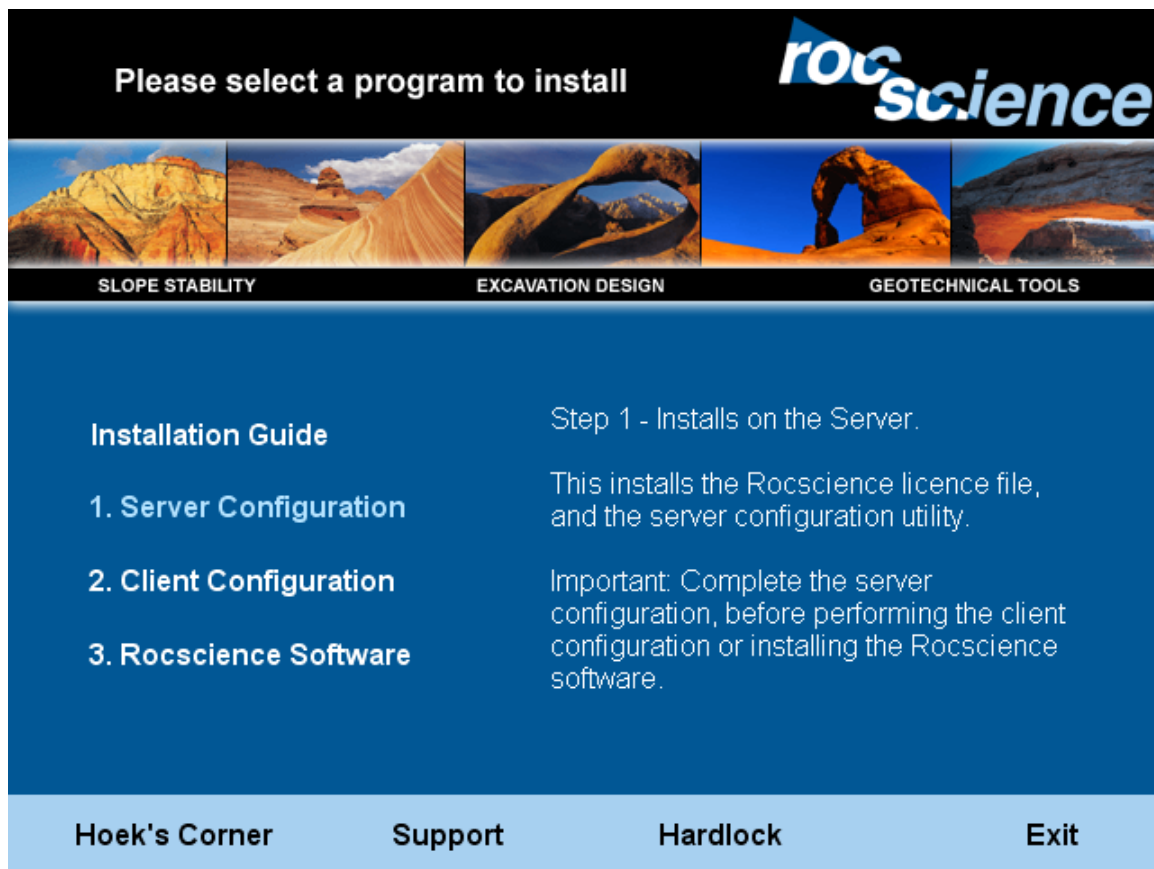
Step 1 of 2 - Server Configuration

This section describes the steps required to install and configure the Rocscience license file on an individual computer or laptop. This computer can be any Windows XP, Vista, Win7, Server2003, Server2008 computer.

1. Log on with administrator privileges on the server.
2. Download the Rocscience CD using the link supplied by Rocscience. Unzip the archive to a folder on the server. Open this folder in Windows Explorer.
3. Run setup.exe and wait for the following main installation screen to appear.



1. Select the **1) Server Configuration** option. An installation window will appear. Continue with the installation. Finish the installation.



2. Run the Server Configuration Utility that now appears in your Rocscience Start menu by clicking on its shortcut icon. You will now see the following window.

University Server Configuration Utility 3.3

Server Machine Code:
FA62HC5664A56DB5

Software Serial Number:
[Empty Field]

Authorization Code:
[Empty Field]

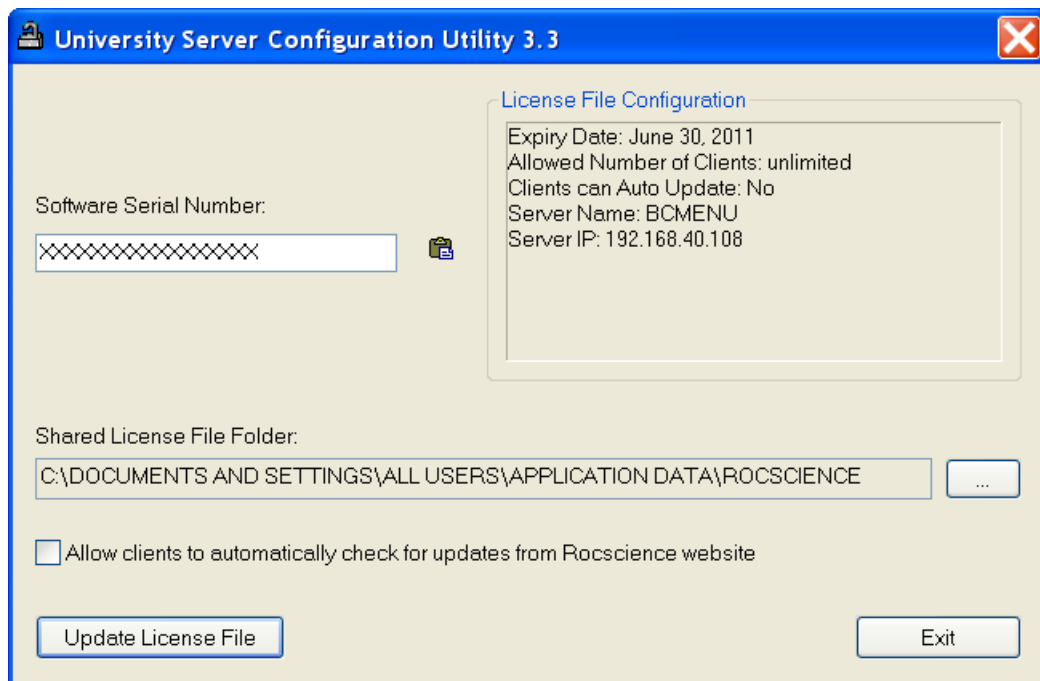
Shared License File Folder:
C:\DOCUMENTS AND SETTINGS\ALL USERS\APPLICATION DATA\ROCSCIENCE

☐ Allow clients to automatically check for updates from Rocscience website

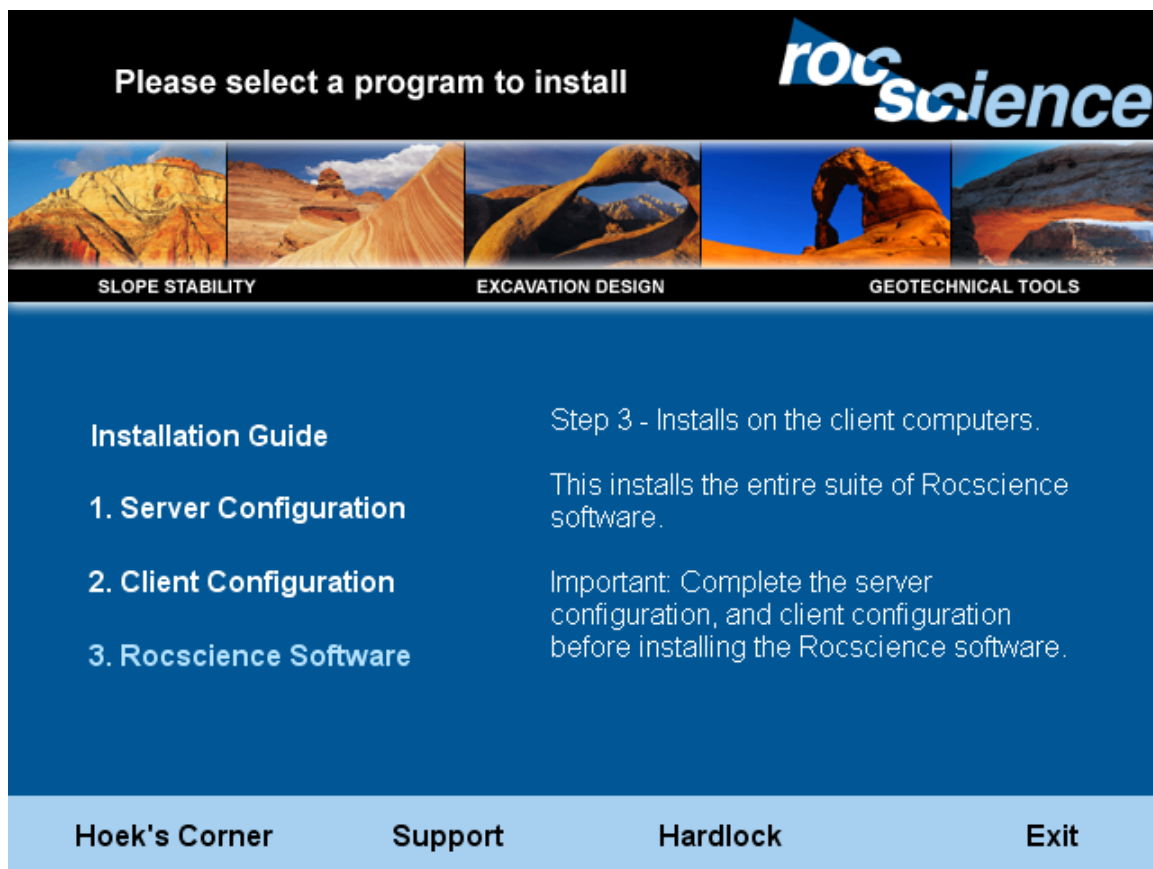
Update License File Exit

License File Configuration
Server Name: BCMENU
Server IP: 192.168.40.108

3. Copy down your **Machine Code** and paste it into an email to Rocscience at: software@rocscience.com along with your full name and the course you are using this software for. We will then supply you with the Software Serial Number and the Authorization Code for your computer by return email.
4. When you receive the Software Serial Number and Authorization Code from Rocscience, copy and paste each code in the appropriate place in the Server Configuration window.
5. Press the Update License File button. Information about your license such as the expiration date should appear in the License File Configuration window. The Machine and Authorization Code edit boxes will also disappear. If you have properly configured the license file, the Server Configuration window should look something like the following window.
- 6.



Step 2 of 2 – Installing the Rocscience Software Suite



This section describes the steps required to install the Rocscience Software Suite. This section assumes that you have properly configured the license file using Step 1.

1. Log on with administrator privileges.
2. Run the setup.exe program on the Rocscience CD.
3. click on the **3) Select the Rocscience Software** option. Follow the installation instructions. A window will appear, Select Components, which allows you to choose which programs to download. Click the programs you are going to use and then click Next>. The Rocscience software that was checked is now installed in your Rocscience folder. To start a particular program, go to that folder and click on the program icon.