

VIOLA.

2. Dies irae.

Allegro assai.

9 17 23 32 38 45 53 61

f 0 *P* *Q* *R* *S* *T*

Andante.

3. Tuba mirum.

4

14 24 31 37 48 54

p 1 *a* *fp* *p* *cresc.* *f* *p* *mf* *p* *rf* *p* *f* *p* *cresc.*

(Grave.)

(Grave.)

5

9

13

17

p

V

W

(Andante.)

[illegible]

VIOLA.

99 108 121

1 p 1 q

p *f*

Andante.

6. Confutatis.

4 10 13 16 27 31 34 37

A B C D E F

f *p*

(Larghetto.)

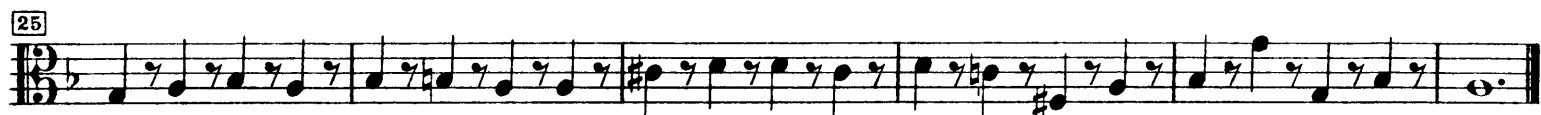
7. Lacrimosa.

7 13 19

G H I

p *cresc.* *f* *p* *f*

VIOLA.



Andante con moto.

8. Domine Jesu.

6

11

17

21

25

29

34

40

46

51

56

61

66

72

VIOLA.

9. Hostias.

Andante.

8 *p* U V

17 W

26 *cresc.* *f* *p* *cresc.* *f* *p* X

34 *cresc.* *f* *p* *f* Y

42 *p* Z

Andante con moto.

51 *f*

58 A

63 B

68 C

78 *p* D

79 *f* E

84

10. Sanctus.

Adagio.

f F

7

VIOLA.

7

11 Allegro. 3

f

23 *G*

31

11. Benedictus.

Andante.

mf

6

12

18 *ff* *t* *p* *mf* *1 s*

25 *u* *b* *b* *cresc.*

38 *V* *fp*

44 *W* *f* *p*

50 *ff* *f* **Allegro.**

56

66 *H*

VIOLA.

12. Agnus Dei.

(Larghetto.)

Musical score for Viola part of Mozart's Requiem, K. 626, Agnus Dei movement. The score is in 3/4 time and B-flat major. It features various dynamics (*mf*, *p*, *ff*, *cresc.*, *f*, *p*), articulations (*passai*, *L*, *M*, *N*, *O*, *Q*, *R*, *S*, *T*, *U*, *V*, *W*, *X*, *Y*), and tempo changes (*Adagio*, *Allegro*). The score is divided into measures with measure numbers in boxes: 9, 21, 33, 47, 56, 61, 67, 73, 80, 90, 98, 105, 111, 117, 125.